

# Technical Corner

12 July 2021

## IHSG

**Range: 6.000 – 6.080**

---Indeks ditutup di atas EMA5,10 dan membentuk pola doji yang merupakan sinyal indecision, stochastic death cross dan MACD histogram convergence positif.

**Target** kenaikan indeks pada level **6.080** dan 6.120 dengan *support* di level 6.000 dan 5.960.

## IHSG (6.040)



## PT Indo Tambangraya Megah, Tbk

**Rekomendasi: Buy**

---Harga ditutup di atas EMA5,10 dan membentuk pola small bullish candle, stochastic death cross dan MACD histogram convergence negatif. **Target** kenaikan harga pada level **15.150** kemudian 15.450 dengan *support* di level 14.550, *cut loss* jika break 14.250.

## ITMG (14.850)



# Technical Corner

12 July 2021

## PT Telkom Indonesia, Tbk

**Rekomendasi: Buy**

---Harga ditutup di atas EMA5,10 dan membentuk pola long white marubozu yang merupakan sinyal bullish continuation, stochastic golden cross dan MACD histogram convergence negatif.

**Target** kenaikan harga pada level **3.220** kemudian 3.280 dengan *support* di level 3.100, *cut loss* jika break 3.040.

## TLKM (3.160)



## PT AKR Corporindo, Tbk

**Rekomendasi: Buy on Weakness**

---Harga ditutup di bawah EMA5,10 dan membentuk pola long black marubozu yang merupakan sinyal bearish continuation, stochastic death cross dan MACD histogram convergence positif.

**Target** harga beli pada level **3.050** dengan *resist* di level 3.140 kemudian 3.210.

## AKRA (3.090)



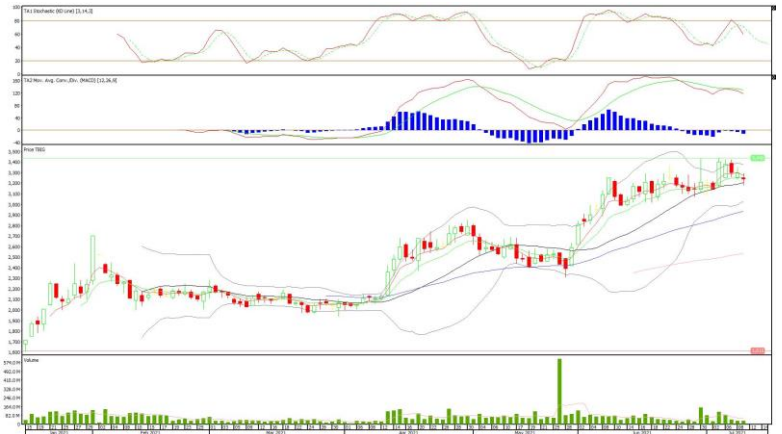
# Technical Corner

12 July 2021

## PT Tower Bersama Infrastructure, Tbk Rekomendasi: Buy on Weakness

---Harga ditutup membentuk pola spinning top yang merupakan sinyal indecision namun masih di atas MA20, stochastic netral dan MACD histogram divergence negatif. **Target** harga beli pada level **3.200** dengan *resist* di level 3.300 kemudian 3.400.

## TBIG (3.240)



## Premier ETF LQ-45 Rekomendasi: Buy

---Harga ditutup di bawah EMA5,10 dan membentuk pola doji yang merupakan sinyal indecision, stochastic konsisten oversold dan MACD histogram convergence negatif. **Target** kenaikan harga pada level **899** kemudian 9005 dengan *support* di level 887, *cut loss* jika break 881.

## R-LQ45X (893)



# Technical Corner

12 July 2021

## Premier ETF Indonesia Financial

**Rekomendasi: Buy on Weakness**

---Harga ditutup di bawah EMA5,10 dan membentuk pola small bearish candle, stochastic konsisten oversold dan MACD histogram convergence negatif. **Target** harga beli pada level **469** dengan *resist* di level 480 kemudian 486.

## XIIF (473)



## Pinnacle Core High Dividend ETF

**Rekomendasi: Buy**

---Harga ditutup membentuk pola small bullish candle, stochastic konsisten oversold dan MACD histogram convergence negatif. **Target** kenaikan harga pada level **402** kemudian 406 dengan *support* di level 394, *cut loss* jika break 390.

## XPDV (398)



# Technical Corner

---

12 July 2021

**PT INDO PREMIER SEKURITAS**

Pacific Century Place 16th Floor SCBD Lot 10  
Jl. Jend. Sudirman Kav. 52-53  
Jakarta Selatan 12190 - Indonesia  
p +62 21 5088 7200

**ANALYSTS CERTIFICATION**

The views expressed in this research report accurately reflect the analyst's personal views about any and all of the subject securities or issuers; and no part of the research analyst's compensation was, is, or will be, directly or indirectly, related to the specific recommendations or views expressed in the report.

**DISCLAIMERS**

This research is based on information obtained from sources believed to be reliable, but we do not make any representation or warranty nor accept any responsibility or liability as to its accuracy, completeness or correctness. Opinions expressed are subject to change without notice. This document is prepared for general circulation. Any recommendations contained in this document does not have regard to the specific investment objectives, financial situation and the particular needs of any specific addressee. This document is not and should not be construed as an offer or a solicitation of an offer to purchase or subscribe or sell any securities. PT. Indo Premier Sekuritas or its affiliates may seek or will seek investment banking or other business relationships with the companies in this report.

**Refer to Important disclosures on the last of this report**