

Technical Corner

8 July 2021

IHSG

Range: 6.000 – 6.090

---Indeks ditutup membentuk pola small bearish candle namun masih di atas EMA5,10, stochastic netral dan MACD histogram divergence positif. **Target** kenaikan indeks pada level **6.090** kemudian 6.135 dengan *support* di level 6.000 dan 5.955.

IHSG (6.044)



PT Barito Pacific, Tbk

Rekomendasi: Buy

---Harga ditutup di atas EMA5,10 dan membentuk pola white closing marubozu yang merupakan sinyal bullish continuation, stochastic golden cross dan MACD histogram divergence positif. **Target** kenaikan harga pada level **910** kemudian 930 dengan *support* di level 870, *cut loss* jika break 850.

BRPT (890)



Technical Corner

8 July 2021

PT Indofood Sukses Makmur, Tbk

Rekomendasi: Buy on Weakness

---Harga ditutup di atas EMA5,10 dan membentuk pola small bearish candle, stochastic memasuki zona netral dan MACD histogram convergence positif. **Target** harga beli pada level **6.400** dengan *resist* di level 6.575 kemudian 6.650.

INDF (6.450)



PT Merdeka Copper Gold, Tbk

Rekomendasi: Buy on Weakness

---Harga ditutup di atas EMA5,10 dan membentuk pola long black marubozu yang merupakan sinyal bearish continuation, stochastic netral dan MACD histogram divergence positif. **Target** harga beli pada level **2.960** dengan *resist* di level 3.130 kemudian 3.240.

MDKA (3.010)



Technical Corner

8 July 2021

PT Timah, Tbk

Rekomendasi: Buy on Weakness

---Harga ditutup di atas EMA5,10 dan membentuk pola small bearish candle, stochastic netral dan MACD histogram divergence positif. **Target** harga beli pada level **1.505** dengan *resist* di level 1.560 kemudian 1.595.

TINS (1.535)



Premier ETF Indonesia SOC

Rekomendasi: Buy on Weakness

---Harga ditutup membentuk pola small bearish candle, stochastic konsisten oversold dan MACD histogram convergence negatif. **Target** harga beli pada level **621** dengan *resist* di level 632 kemudian 636.

XISC (627)



Technical Corner

8 July 2021

ETF MNC36 Likuid

Rekomendasi: Buy on Weakness

---Harga ditutup membentuk pola small bearish candle, stochastic netral dan MACD histogram divergence positif.

Target harga beli pada level **404** dengan *resist* di level 410 kemudian 414

XMTS (407)



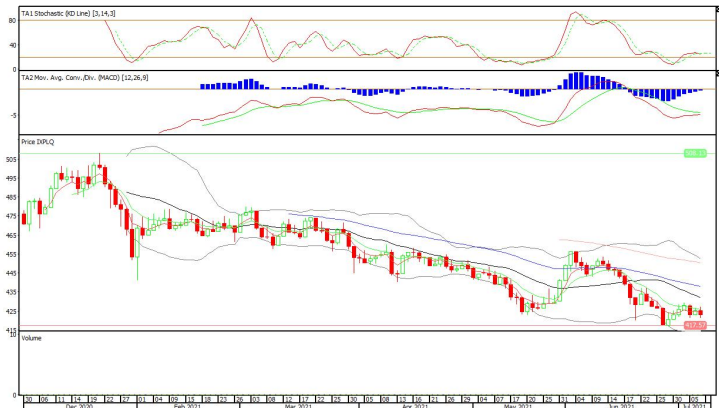
XPLQ (423)

Pinnacle Enhanced Liquid ETF

Rekomendasi: Buy on Weakness

---Harga ditutup membentuk pola small bearish candle, stochastic death cross dan MACD histogram convergence negatif.

Target harga beli pada level **420** dengan *resist* di level 428 kemudian 432



Technical Corner

8 July 2021

PT INDO PREMIER SEKURITAS

Pacific Century Place 16th Floor SCBD Lot 10
Jl. Jend. Sudirman Kav. 52-53
Jakarta Selatan 12190 - Indonesia
p +62 21 5088 7200

ANALYSTS CERTIFICATION

The views expressed in this research report accurately reflect the analyst's personal views about any and all of the subject securities or issuers; and no part of the research analyst's compensation was, is, or will be, directly or indirectly, related to the specific recommendations or views expressed in the report.

DISCLAIMERS

This research is based on information obtained from sources believed to be reliable, but we do not make any representation or warranty nor accept any responsibility or liability as to its accuracy, completeness or correctness. Opinions expressed are subject to change without notice. This document is prepared for general circulation. Any recommendations contained in this document does not have regard to the specific investment objectives, financial situation and the particular needs of any specific addressee. This document is not and should not be construed as an offer or a solicitation of an offer to purchase or subscribe or sell any securities. PT. Indo Premier Sekuritas or its affiliates may seek or will seek investment banking or other business relationships with the companies in this report.

Refer to Important disclosures on the last of this report