

# Technical Corner

16 June 2021

## IHSG

**Range: 6.050 – 6.130**

---Indeks ditutup membentuk pola doji yang merupakan sinyal indecision, stochastic konsisten overbought dan MACD histogram convergence positif.

**Target** pelemahan indeks pada level **6.050** kemudian 6.010 dengan *resist* di level 6.130 dan 6.170.

## IHSG (6.089)



## PT Bank Central Asia, Tbk

**Rekomendasi: Buy**

---Harga ditutup di atas MA20 dan membentuk pola white closing marubozu yang merupakan sinyal bullish continuation, stochastic netral dan MACD histogram convergence positif. **Target** kenaikan harga pada level **32.675** kemudian 33.000 dengan *support* di level 32.025, *cut loss* jika break 31.700.

## BBCA (32.350)



# Technical Corner

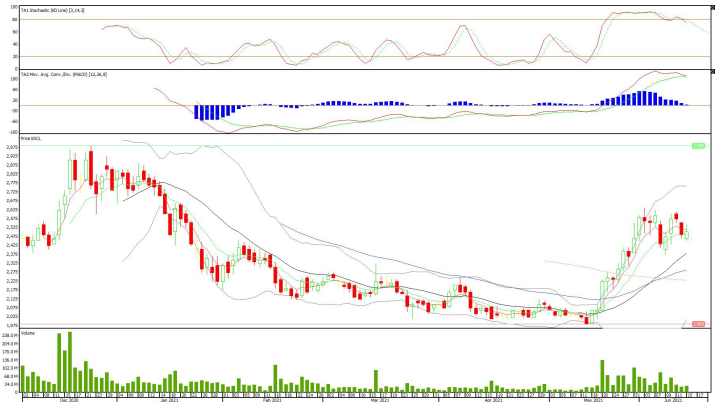
16 June 2021

## PT XL Axiata, Tbk

**Rekomendasi: Buy**

---Harga ditutup di atas EMA10 dan membentuk pola long white marubozu yang merupakan sinyal bullish continuation, stochastic memasuki zona netral dan MACD histogram convergence positif. **Target** kenaikan harga pada level **2.540** kemudian 2.580 dengan *support* di level 2.460, *cut loss* jika break 2.420.

## EXCL (2.500)



## PT Bank Negara Indonesia, Tbk

**Rekomendasi: Buy on Weakness**

---Harga ditutup membentuk pola small bearish candle, stochastic netral dan MACD histogram convergence positif. **Target** harga beli pada level **5.475** dengan *resist* di level 5.650 kemudian 5.750.

## BBNI (5.525)



# Technical Corner

16 June 2021

## PT Indosat, Tbk

**Rekomendasi: Buy on Weakness**

---Harga ditutup membentuk pola long black marubozu yang merupakan sinyal bearish continuation, stochastic netral dan MACD histogram convergence positif. **Target** harga beli pada level **6.650** dengan *resist* di level 6.925 kemudian 7.100.

## ISAT (6.750)



## Syariah Premier ETF JII

**Rekomendasi: Buy**

---Harga ditutup di atas EMA5,10 dan membentuk pola white closing marubozu yang merupakan sinyal bullish continuation, stochastic netral dan MACD histogram convergence positif. **Target** kenaikan harga pada level **591** kemudian 600 dengan *support* di level 573, *cut loss* jika break 564.

## XIJI (582)



# Technical Corner

16 June 2021

## Pinnacle Enhanced Shariah ETF

### Rekomendasi: Buy

---Harga ditutup di atas EMA5,10 dan membentuk pola white closing marubozu yang merupakan sinyal bullish continuation, stochastic netral dan MACD histogram convergence positif. **Target** kenaikan harga pada level **368** kemudian 373 dengan *support* di level 358, *cut loss* jika break 353.

## XPES (363)



## XPFT (497)

## Pinnacle FTSE Indonesia ETF

### Rekomendasi: Buy on Weakness

---Harga ditutup membentuk pola doji yang merupakan sinyal indecision, stochastic netral dan MACD histogram convergence positif. **Target** harga beli pada level **493** dengan *resist* di level 501 kemudian 505.



# Technical Corner

16 June 2021

## **PT INDO PREMIER SEKURITAS**

Pacific Century Place 16th Floor SCBD Lot 10  
Jl. Jend. Sudirman Kav. 52-53  
Jakarta Selatan 12190 - Indonesia  
p +62 21 5088 7200

### **ANALYSTS CERTIFICATION**

The views expressed in this research report accurately reflect the analyst's personal views about any and all of the subject securities or issuers; and no part of the research analyst's compensation was, is, or will be, directly or indirectly, related to the specific recommendations or views expressed in the report.

### **DISCLAIMERS**

This research is based on information obtained from sources believed to be reliable, but we do not make any representation or warranty nor accept any responsibility or liability as to its accuracy, completeness or correctness. Opinions expressed are subject to change without notice. This document is prepared for general circulation. Any recommendations contained in this document does not have regard to the specific investment objectives, financial situation and the particular needs of any specific addressee. This document is not and should not be construed as an offer or a solicitation of an offer to purchase or subscribe or sell any securities. PT. Indo Premier Sekuritas or its affiliates may seek or will seek investment banking or other business relationships with the companies in this report.

**Refer to Important disclosures on the last of this report**