

Technical Corner

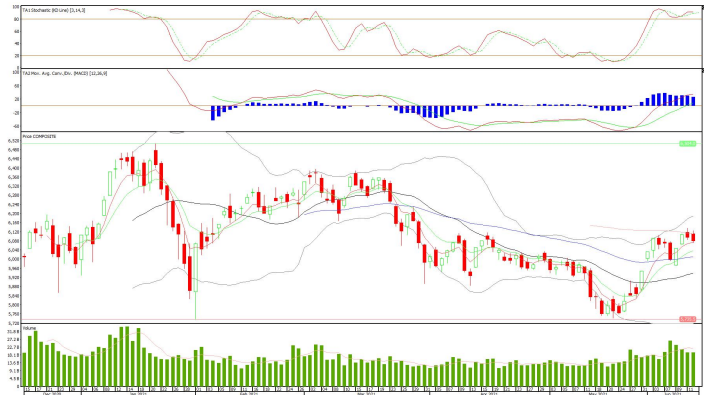
15 June 2021

IHSG

Range: 6.040 – 6.120

---Indeks ditutup membentuk pola long black marubozu yang merupakan sinyal bearish continuation, stochastic konsisten overbought dan MACD histogram convergence positif. **Target** pelemahan indeks pada level **6.040** dan 6.000 dengan *resist* di level 6.120 kemudian 6.160.

IHSG (6.080)



PT Vale Indonesia, Tbk

Rekomendasi: Buy

---Harga ditutup di atas EMA5,10 dan membentuk pola white closing marubozu yang merupakan sinyal bullish continuation, stochastic netral dan MACD bullish crossover. **Target** kenaikan harga pada level **4.930** kemudian 5.000 dengan *support* di level 4.770, *cut loss* jika break 4.690.

INCO (4.850)



Technical Corner

15 June 2021

PT AKR Corporindo, Tbk

Rekomendasi: Buy on Weakness

---Harga ditutup membentuk pola spinning top yang merupakan sinyal indecision, stochastic golden cross dan MACD histogram convergence positif. **Target** harga beli pada level **3.180** dengan *resist* di level 3.270, kemudian 3.340.

AKRA (3.200)



PT Telkom Indonesia, Tbk

Rekomendasi: Buy on Weakness

---Harga ditutup membentuk pola long black marubozu yang merupakan sinyal bearish continuation namun masih di atas MA20, stochastic netral dan MACD histogram convergence positif. **Target** harga beli pada level **3.360** dengan *resist* di level 3.470, kemudian 3.550.

TLKM (3.410)



Technical Corner

15 June 2021

PT Sarana Menara Nusantara, Tbk

Rekomendasi: Buy on Weakness

---Harga ditutup membentuk pola black closing marubozu yang merupakan sinyal bearish continuation, namun masih di atas MA 20, stochastic netral dan MACD histogram divergence negatif. **Target** harga beli pada level **1.215** dengan *resist* di level 1.250, kemudian 1280.

TOWR (1.225)



Danareka ETF Indonesia Top 40

Rekomendasi: Buy on Weakness

---Harga ditutup membentuk pola long black marubozu yang merupakan sinyal bearish continuation namun masih di atas EMA10, stochastic konsisten overbought dan MACD histogram convergence positif. **Target** harga beli pada level **442** dengan *resist* di level 449 dan 454.

XDIF (445)



Technical Corner

15 June 2021

Premier ETF Indonesia Consumer

Rekomendasi: Buy on Weakness

---Harga ditutup membentuk pola long black marubozu yang merupakan sinyal bearish continuation, stochastic death cross dan MACD histogram convergence positif. **Target** harga beli pada level **941** dengan *resist* di level 954 dan 964.

XIIC (946)



Premier ETF Indonesia SOC

Rekomendasi: Buy on Weakness

---Harga ditutup membentuk pola long black marubozu yang merupakan sinyal bearish continuation, stochastic memasuki zona overbought dan MACD histogram convergence positif. **Target** harga beli pada level **684** dengan *resist* di level 708 dan 722.

XISC (694)



Technical Corner

15 June 2021

PT INDO PREMIER SEKURITAS

Pacific Century Place 16th Floor SCBD Lot 10
Jl. Jend. Sudirman Kav. 52-53
Jakarta Selatan 12190 - Indonesia
p +62 21 5088 7200

ANALYSTS CERTIFICATION

The views expressed in this research report accurately reflect the analyst's personal views about any and all of the subject securities or issuers; and no part of the research analyst's compensation was, is, or will be, directly or indirectly, related to the specific recommendations or views expressed in the report.

DISCLAIMERS

This research is based on information obtained from sources believed to be reliable, but we do not make any representation or warranty nor accept any responsibility or liability as to its accuracy, completeness or correctness. Opinions expressed are subject to change without notice. This document is prepared for general circulation. Any recommendations contained in this document does not have regard to the specific investment objectives, financial situation and the particular needs of any specific addressee. This document is not and should not be construed as an offer or a solicitation of an offer to purchase or subscribe or sell any securities. PT. Indo Premier Sekuritas or its affiliates may seek or will seek investment banking or other business relationships with the companies in this report.

Refer to Important disclosures on the last of this report