

Technical Corner

8 June 2021

IHSG

Range: 6.030– 6.110

---Indeks ditutup membentuk pola spinning top yang merupakan sinyal indecision, stochastic death cross dan MACD histogram convergence positif. **Target** pelemahan indeks pada level **6.030** dan 5.990 dengan *resist* di level 6.110 dan 6.150.

IHSG (6.070)



PT Merdeka Copper Gold, Tbk

Rekomendasi: Buy

---Harga ditutup di atas EMA5,10 dan membentuk pola long white marubozu yang merupakan sinyal bullish continuation, stochastic netral dan MACD histogram divergence positif. **Target** kenaikan harga pada level **2.760** kemudian 2.820 dengan *support* di level 2.640, *cut loss* jika break 2.580.

MDKA (2.700)



Technical Corner

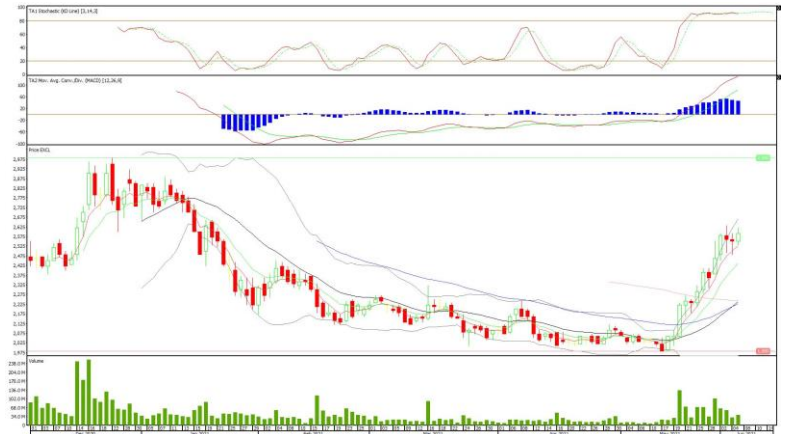
8 June 2021

PT XL Axiata, Tbk

Rekomendasi: Buy

---Harga ditutup di atas EMA5,10 dan membentuk pola long white marubozu yang merupakan sinyal bullish continuation, stochastic konsisten overbought dan MACD histogram convergence positif. **Target** kenaikan harga pada level **2.630** kemudian 2.670 dengan *support* di level 2.550, *cut loss* jika break 2.510.

EXCL (2.590)



PT Bank Mandiri, Tbk

Rekomendasi: Buy on Weakness

---Harga ditutup membentuk pola black opening marubozu yang merupakan sinyal bearish continuation namun masih di atas EMA5,10, stochastic death cross dan MACD histogram convergence positif. **Target** harga beli pada level **6.075** dengan *resist* di level 6.200, kemudian 6.325.

BMRI (6.125)



Technical Corner

8 June 2021

PT Indofood Sukses Makmur, Tbk

Rekomendasi: Buy on Weakness

---Harga ditutup membentuk pola doji yang merupakan sinyal indecision namun masih di atas EMA5,10, stochastic overbought dan MACD histogram divergence positif. **Target** harga beli pada level **6.525** dengan *resist* di level 6.675, kemudian 6.800.

INDF (6.575)



Cipta ETF Index LQ45

Rekomendasi: Buy on Weakness

---Harga ditutup membentuk pola small bearish candle, stochastic death cross dan MACD histogram convergence positif. **Target** harga beli pada level **93** dengan *resist* di level 95 kemudian 96.

XCLQ (94)



Technical Corner

8 June 2021

Premier ETF Pefindo i-Grade

Rekomendasi: Buy on Weakness

---Harga ditutup membentuk pola long black marubozu yang merupakan sinyal bearish continuation, stochastic death cross dan MACD histogram convergence positif. **Target** harga beli pada level **168** dengan *resist* di level 172 kemudian 174.

XIPI (169)



Pinnacle Indonesia Large Cap ETF

Rekomendasi: Buy on Weakness

---Harga ditutup membentuk pola long black marubozu yang merupakan sinyal bearish continuation, stochastic death cross dan MACD histogram convergence positif. **Target** harga beli pada level **423** dengan *resist* di level 433 kemudian 439.

XPLC (427)



Technical Corner

8 June 2021

PT INDO PREMIER SEKURITAS

Pacific Century Place 16th Floor SCBD Lot 10
Jl. Jend. Sudirman Kav. 52-53
Jakarta Selatan 12190 - Indonesia
p +62 21 5088 7200

ANALYSTS CERTIFICATION

The views expressed in this research report accurately reflect the analyst's personal views about any and all of the subject securities or issuers; and no part of the research analyst's compensation was, is, or will be, directly or indirectly, related to the specific recommendations or views expressed in the report.

DISCLAIMERS

This research is based on information obtained from sources believed to be reliable, but we do not make any representation or warranty nor accept any responsibility or liability as to its accuracy, completeness or correctness. Opinions expressed are subject to change without notice. This document is prepared for general circulation. Any recommendations contained in this document does not have regard to the specific investment objectives, financial situation and the particular needs of any specific addressee. This document is not and should not be construed as an offer or a solicitation of an offer to purchase or subscribe or sell any securities. PT. Indo Premier Sekuritas or its affiliates may seek or will seek investment banking or other business relationships with the companies in this report.

Refer to Important disclosures on the last of this report