

Technical Corner

31 May 2021

IHSG

Range: 5.790 – 5.910

---Indeks ditutup membentuk pola long black marubozu yang merupakan sinyal bearish continuation namun masih di atas EMA5 dan 10, stochastic netral dan MACD bullish crossover. **Target** kenaikan harga pada level **5.910** dan 5.970 dengan *support* di level 5.790 kemudian 5.730.

IHSG (5.849)



Aneka Tambang, Tbk

Rekomendasi: Buy

---Harga ditutup di atas EMA5,10 dan membentuk pola doji yang merupakan sinyal indecision, stochastic memasuki zona netral dan MACD histogram convergence negatif. **Target** kenaikan harga pada level **2.500** kemudian 2.540 dengan *support* di level 2.420, *cut loss* jika break 2.380.

ANTM (2.460)



Technical Corner

31 May 2021

Bank Rakyat Indonesia, Tbk

Rekomendasi: Buy

---Harga ditutup di atas EMA5,10 dan membentuk pola small bullish candle, stochastic netral dan MACD histogram divergence positif. **Target** kenaikan harga pada level **4.140** kemudian 4.210 dengan *support* di level 4.000, *cut loss* jika break 3.930.

BBRI (4.070)



Japfa Comfeed Indonesia, Tbk

Rekomendasi: Buy

---Harga ditutup di atas EMA5,10 dan membentuk pola long white marubozu yang merupakan sinyal bullish continuation, stochastic memasuki zona netral dan MACD histogram convergence negatif. **Target** kenaikan harga pada level **2.080** kemudian 2.130 dengan *support* di level 1.980, *cut loss* jika break 1.930.

JPFA (2.030)



Technical Corner

31 May 2021

PT Summarecon Agung, Tbk

Rekomendasi: Buy on Weakness

---Harga ditutup membentuk pola small bearish candle namun masih tertahan MA100, stochastic oversold dan MACD histogram convergence negatif. **Target** harga beli pada level **890**, dengan *resist* di level 925, kemudian 945.

SMRA (905)

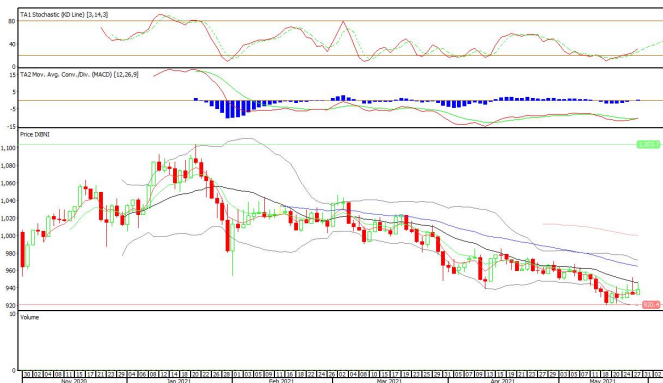


BNI-AM Nusantara MSCI Indo ETF

Rekomendasi: Buy

---Harga ditutup di atas EMA5, 10 dan membentuk pola white opening marubozu yang merupakan sinyal bullish continuation, stochastic netral dan MACD bullish crossover. **Target** kenaikan harga pada level **943** kemudian 948 dengan *support* di level 933, *cut loss* jika break 928.

XBNI (938)



Technical Corner

31 May 2021

Premier ETF MSCI Indonesia Large Cap

Rekomendasi: Buy

--- Harga ditutup di atas EMA5, 10 dan membentuk pola white opening marubozu yang merupakan sinyal bullish continuation, stochastic netral dan MACD histogram divergence positif. **Target** kenaikan harga pada level **237** kemudian 239 dengan *support* di level 233, *cut loss* jika break 231.

XIML (235)



XISR (347)

Premier ETF SRI-KEHATI

Rekomendasi: Buy

---Harga ditutup di atas EMA5, 10 dan membentuk pola white opening marubozu yang merupakan sinyal bullish continuation, stochastic netral dan MACD bullish crossover. **Target** kenaikan harga pada level **350** kemudian 353 dengan *support* di level 344, *cut loss* jika break 341.



Technical Corner

31 May 2021

PT INDO PREMIER SEKURITAS

Pacific Century Place 16th Floor SCBD Lot 10
Jl. Jend. Sudirman Kav. 52-53
Jakarta Selatan 12190 - Indonesia
p +62 21 5088 7200

ANALYSTS CERTIFICATION

The views expressed in this research report accurately reflect the analyst's personal views about any and all of the subject securities or issuers; and no part of the research analyst's compensation was, is, or will be, directly or indirectly, related to the specific recommendations or views expressed in the report.

DISCLAIMERS

This research is based on information obtained from sources believed to be reliable, but we do not make any representation or warranty nor accept any responsibility or liability as to its accuracy, completeness or correctness. Opinions expressed are subject to change without notice. This document is prepared for general circulation. Any recommendations contained in this document does not have regard to the specific investment objectives, financial situation and the particular needs of any specific addressee. This document is not and should not be construed as an offer or a solicitation of an offer to purchase or subscribe or sell any securities. PT. Indo Premier Sekuritas or its affiliates may seek or will seek investment banking or other business relationships with the companies in this report.

Refer to Important disclosures on the last of this report