

Technical Corner

28 May 2021

IHSG

Range: 5.780 – 5.900

---Indeks ditutup di atas EMA5,10 dan membentuk pola small bearish candle, stochastic memasuki zona netral dan MACD histogram convergence negatif. **Target** kenaikan indeks pada level **5.900** dan 5.960 dengan *support* di level 5.780 kemudian 5.720.

IHSG (5.842)

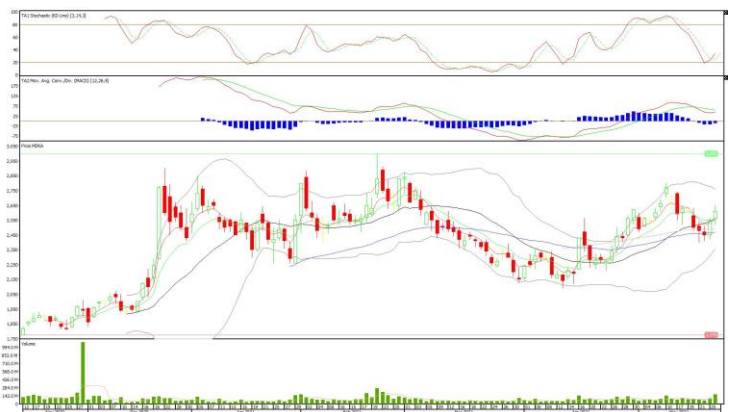


PT Merdeka Copper Gold, Tbk

Rekomendasi: Buy

---Harga ditutup di atas EMA5,10 dan membentuk pola long white marubozu yang merupakan sinyal bullish continuation, stochastic golden cross dan MACD histogram convergence negatif. **Target** kenaikan harga pada level **2.660** kemudian 2.710 dengan *support* di level 2.560, *cut loss* jika break 2.510.

MDKA (2.610)



Technical Corner

28 May 2021

PT AKR Corporindo, Tbk

Rekomendasi: Buy

---Harga ditutup di atas EMA5,10 dan membentuk pola doji yang merupakan sinyal indecision, stochastic netral dan MACD bullish crossover. **Target** kenaikan harga pada level **3.290** kemudian 3.360 dengan *support* di level 3.150, *cut loss* jika break 3.080.

AKRA (3.220)



PT Astra International, Tbk

Rekomendasi: Buy

---Harga ditutup di atas EMA5 dan membentuk pola long white marubozu yang merupakan sinyal bullish continuation, stochastic golden cross dan MACD histogram convergence negatif. **Target** kenaikan harga pada level **5.300** kemudian 5.450 dengan *support* di level 5.000, *cut loss* jika break 4.850.

ASII (5.150)



Technical Corner

28 May 2021

PT Adaro Energy, Tbk

Rekomendasi: Buy on Weakness

---Harga ditutup membentuk pola black closing marubozu yang merupakan sinyal bearish continuation, stochastic konsisten oversold dan MACD histogram convergence negatif. **Target** harga beli pada level **1.160** dengan *resist* di level 1.200 kemudian 1.220..

ADRO (1.165)



Cipta ETF Index LQ45

Rekomendasi: Buy on Weakness

---Harga ditutup membentuk pola doji yang merupakan sinyal indecision namun masih di atas EMA5, stochastic memasuki zona netral dan MACD histogram convergence negatif. **Target** harga beli pada level **88** dengan *resist* di level 90 kemudian 91.

XCLQ (89)



Technical Corner

28 May 2021

Premier ETF Indonesia Consumer

Rekomendasi: Buy

---Harga ditutup di atas EMA5 dan membentuk pola doji yang merupakan sinyal indecision, stochastic memasuki zona netral dan MACD histogram convergence negatif. **Target** kenaikan harga pada level **933** kemudian 941 dengan *support* di level 917, *cut loss* jika break 909.

XIIC (925)



ETF MNC36 Likuid

Rekomendasi: Buy on Weakness

---Harga ditutup membentuk pola doji yang merupakan sinyal indecision, stochastic konsisten oversold dan MACD histogram convergence negatif. **Target** harga beli pada level **421** dengan *resist* di level 431 kemudian 438.

XMTS (424)



Technical Corner

28 May 2021

PT INDO PREMIER SEKURITAS

Pacific Century Place 16th Floor SCBD Lot 10
Jl. Jend. Sudirman Kav. 52-53
Jakarta Selatan 12190 - Indonesia
p +62 21 5088 7200

ANALYSTS CERTIFICATION

The views expressed in this research report accurately reflect the analyst's personal views about any and all of the subject securities or issuers; and no part of the research analyst's compensation was, is, or will be, directly or indirectly, related to the specific recommendations or views expressed in the report.

DISCLAIMERS

This research is based on information obtained from sources believed to be reliable, but we do not make any representation or warranty nor accept any responsibility or liability as to its accuracy, completeness or correctness. Opinions expressed are subject to change without notice. This document is prepared for general circulation. Any recommendations contained in this document does not have regard to the specific investment objectives, financial situation and the particular needs of any specific addressee. This document is not and should not be construed as an offer or a solicitation of an offer to purchase or subscribe or sell any securities. PT. Indo Premier Sekuritas or its affiliates may seek or will seek investment banking or other business relationships with the companies in this report.

Refer to Important disclosures on the last of this report