

# Technical Corner

19 May 2021

## IHSG

**Range: 5.780 – 5.890**

---Indeks ditutup membentuk pola doji yang merupakan sinyal indecision, stochastic death cross dan MACD histogram divergence negatif. **Target** kenaikan indeks pada level **5.890** dan 5.945 dengan *support* di level 5.780 kemudian 5.725.

## IHSG (5.834)



## PT Vale Indonesia, Tbk

**Rekomendasi: Buy**

---Harga ditutup di atas EMA5,10 dan membentuk pola spinning top yang merupakan sinyal indecision, stochastic overbought dan MACD histogram convergence positif. **Target** kenaikan harga pada level **5.475** kemudian 5.625 dengan *support* di level 5.175, *cut loss* jika *break* 5.025.

## INCO (5.325)



# Technical Corner

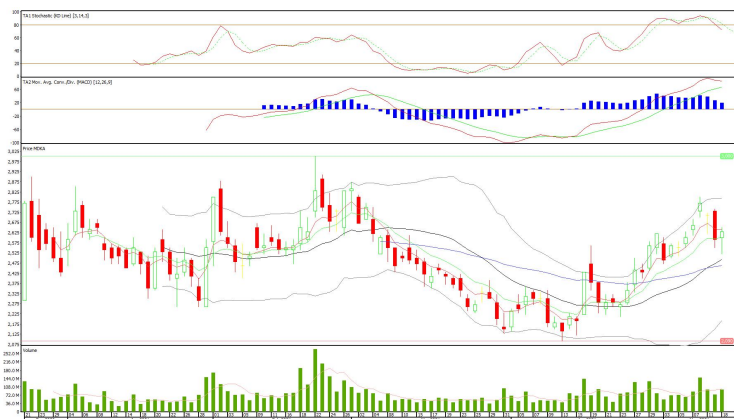
19 May 2021

## PT Merdeka Copper Gold, Tbk

**Rekomendasi: Buy**

---Harga ditutup di atas EMA10 dan membentuk pola small bullish candle, stochastic memasuki zona netral dan MACD histogram convergence positif. **Target** kenaikan harga pada level **2.680** kemudian 2.730 dengan *support* di level 2.580, *cut loss* jika break 2.530.

## MDKA (2.630)

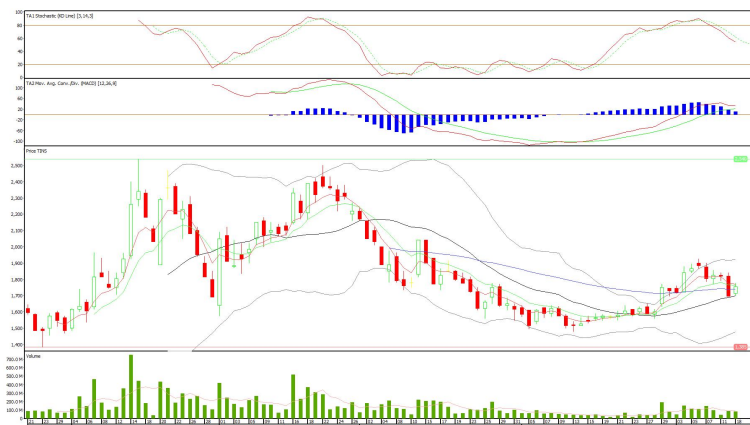


## PT Timah, Tbk

**Rekomendasi: Buy**

---Harga ditutup di atas MA 20 dan membentuk pola long white marubozu yang merupakan sinyal bullish continuation, stochastic netral dan MACD histogram convergence positif. **Target** kenaikan harga pada level **1.795** kemudian 1.835 dengan *support* di level 1.715, *cut loss* jika break 1.675.

## TINS (1.755)



# Technical Corner

19 May 2021

## PT Pabrik Kertas Tjiwi Kimia, Tbk

**Rekomendasi: Buy on Weakness**

---Harga ditutup di atas EMA10 dan membentuk pola spinning top yang merupakan sinyal indecision, stochastic death cross dan MACD histogram convergence negatif. **Target** harga beli pada level **10.500** dengan *resist* di level 10.900 kemudian 11.100.

## TKIM (10.700)



## Premier ETF Indonesia SOC

**Rekomendasi: Buy**

---Harga ditutup membentuk pola spinning top yang merupakan sinyal indecision, stochastic memasuki zona oversold dan MACD histogram convergence positif. **Target** kenaikan harga pada level **697** kemudian 710 dengan *support* di level 671, *cut loss* jika *break* 658.

## XISC (684)



# Technical Corner

19 May 2021

## Premier ETF SMinfra18

### Rekomendasi: Buy

---Harga ditutup membentuk pola long white marubozu yang merupakan sinyal bullish continuation, stochastic netral dan MACD histogram divergence negatif.

**Target** kenaikan harga pada level **313** kemudian 317 dengan *support* di level 305, *cut loss* jika *break* 301.

## XISI (309)



## ETF MNC36 Likuid

### Rekomendasi: Buy

---Harga ditutup membentuk pola spinning top yang merupakan sinyal indecision, stochastic konsisten oversold dan MACD histogram divergence negatif.

**Target** kenaikan harga pada level **435** kemudian 440 dengan *support* di level 425, *cut loss* jika *break* 420.

## XMTS (430)



# Technical Corner

---

19 May 2021

## **PT INDO PREMIER SEKURITAS**

Pacific Century Place 16th Floor SCBD Lot 10  
Jl. Jend. Sudirman Kav. 52-53  
Jakarta Selatan 12190 - Indonesia  
p +62 21 5088 7200

### **ANALYSTS CERTIFICATION**

The views expressed in this research report accurately reflect the analyst's personal views about any and all of the subject securities or issuers; and no part of the research analyst's compensation was, is, or will be, directly or indirectly, related to the specific recommendations or views expressed in the report.

### **DISCLAIMERS**

This research is based on information obtained from sources believed to be reliable, but we do not make any representation or warranty nor accept any responsibility or liability as to its accuracy, completeness or correctness. Opinions expressed are subject to change without notice. This document is prepared for general circulation. Any recommendations contained in this document does not have regard to the specific investment objectives, financial situation and the particular needs of any specific addressee. This document is not and should not be construed as an offer or a solicitation of an offer to purchase or subscribe or sell any securities. PT. Indo Premier Sekuritas or its affiliates may seek or will seek investment banking or other business relationships with the companies in this report.

**Refer to Important disclosures on the last of this report**