

Technical Corner

28 April 2021

IHSG

Range: 5.920 – 6.000

---Indeks ditutup di bawah EMA5,10 dan membentuk pola small bearish candle, stochastic netral dan MACD histogram convergence positif. **Target** pelemahan indeks pada level **5.920** dan 5.880 dengan *resist* di level 6.000 dan 6.040.

IHSG (5.960)



PT Ciputra Development, Tbk

Rekomendasi: Buy

---Harga ditutup di atas EMA5,10 dan membentuk pola long white marubozu yang merupakan sinyal bullish continuation, stochastic golden cross dan MACD histogram divergence positif. **Target** kenaikan harga pada level **1.180** kemudian 1.205 dengan *support* di level 1.130, *cut loss* jika *break* 1.105.

CTRA (1.155)



Technical Corner

28 April 2021

PT Pakuwon Jati, Tbk

Rekomendasi: Buy

---Harga ditutup di atas EMA5,10 dan membentuk pola long white marubozu yang merupakan sinyal bullish continuation, stochastic netral dan MACD histogram divergence positif. **Target** kenaikan harga pada level **545** kemudian 555 dengan *support* di level 525, *cut loss* jika *break* 515.

PWON (535)



PT Bank Syariah Indonesia, Tbk

Rekomendasi: Buy on Weakness

---Harga ditutup membentuk pola small bearish candle, stochastic netral dan MACD convergence positif. **Target** harga beli pada level **2.260** dengan *resist* di level 2.350 kemudian 2.400.

BRIS (2.290)



Technical Corner

28 April 2021

PT BPD Jawa Timur, Tbk

Rekomendasi: Buy on Weakness

---Harga ditutup membentuk pola small bearish candle, stochastic netral dan MACD convergence positif. **Target** harga beli pada level **785** dengan *resist* di level 805 kemudian 815.

BJTM (795)

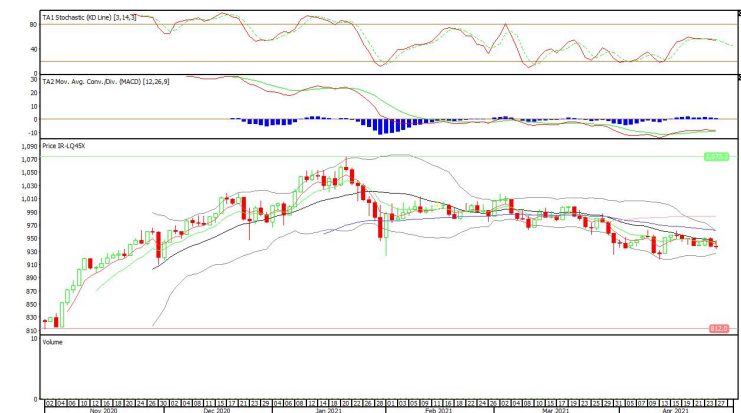


Premier ETF LQ-45

Rekomendasi: Buy on Weakness

---Harga ditutup di bawah EMA5,10 dan membentuk pola doji yang merupakan sinyal indecision, stochastic netral dan MACD histogram convergence positif. **Target** harga beli pada level **927** dengan *resist* di level 946 kemudian 955.

R-LQ45X (937)



Technical Corner

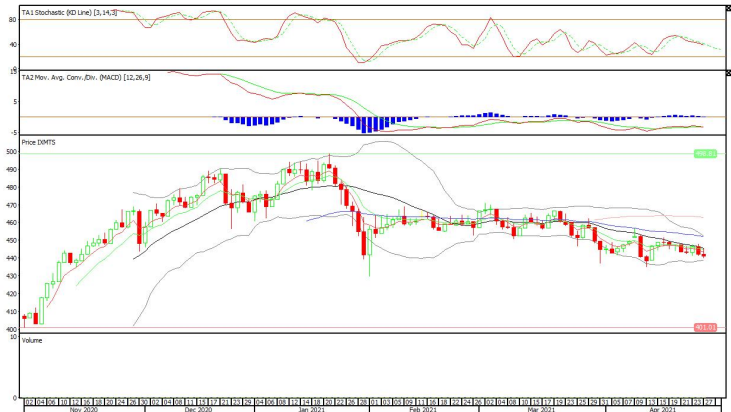
28 April 2021

ETF MNC36 Likuid

Rekomendasi: Buy on Weakness

---Harga ditutup di bawah EMA5,10 dan membentuk pola small bearish candle, stochastic netral dan MACD histogram convergence positif. **Target** harga beli pada level **439** dengan *resist* di level 445 kemudian 449.

XMTS (441)



Pinnacle Indonesia Large Cap ETF

Rekomendasi: Buy on Weakness

---Harga ditutup di bawah EMA5,10 dan membentuk pola small bearish candle, stochastic netral dan MACD histogram convergence positif. **Target** harga beli pada level **425** dengan *resist* di level 432 kemudian 437.

XPLC (427)



Technical Corner

28 April 2021

PT INDO PREMIER SEKURITAS

Pacific Century Place 16th Floor SCBD Lot 10
Jl. Jend. Sudirman Kav. 52-53
Jakarta Selatan 12190 - Indonesia
p +62 21 5088 7200

ANALYSTS CERTIFICATION

The views expressed in this research report accurately reflect the analyst's personal views about any and all of the subject securities or issuers; and no part of the research analyst's compensation was, is, or will be, directly or indirectly, related to the specific recommendations or views expressed in the report.

DISCLAIMERS

This research is based on information obtained from sources believed to be reliable, but we do not make any representation or warranty nor accept any responsibility or liability as to its accuracy, completeness or correctness. Opinions expressed are subject to change without notice. This document is prepared for general circulation. Any recommendations contained in this document does not have regard to the specific investment objectives, financial situation and the particular needs of any specific addressee. This document is not and should not be construed as an offer or a solicitation of an offer to purchase or subscribe or sell any securities. PT. Indo Premier Sekuritas or its affiliates may seek or will seek investment banking or other business relationships with the companies in this report.

Refer to Important disclosures on the last of this report