

Technical Corner

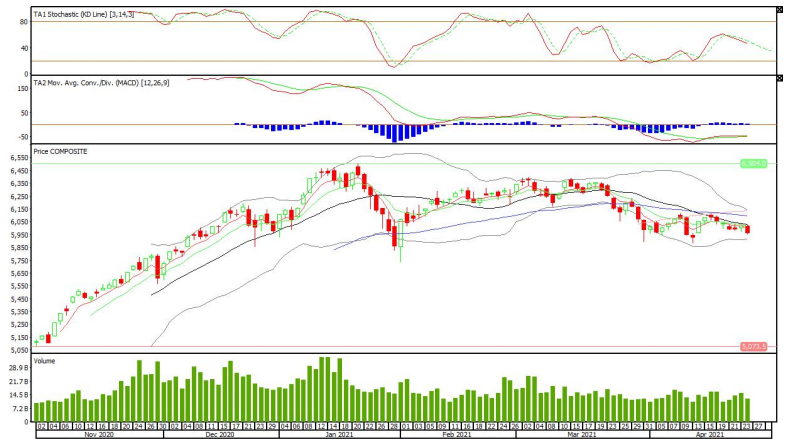
27 April 2021

IHSG

Range: 5.910 – 6.020

---Indeks ditutup membentuk pola long black marubozu yang merupakan sinyal bearish continuation namun volume sudah berkurang serta mendekati area support triple bottom dan lower band bollinger, stochastic netral dan MACD histogram convergence positif. **Target** kenaikan indeks pada level **6.020** dan 6.075 dengan *support* di level 5.910 dan 5.855.

IHSG (5.965)



PT Aneka Tambang, Tbk

Rekomendasi: Buy

---Harga ditutup di atas EMA5,10 dan membentuk pola small bullish candle, stochastic netral dan MACD histogram divergence positif. **Target** kenaikan harga pada level **2.430** kemudian 2.470 dengan *support* di level 2.350, *cut loss* jika *break* 2.310.

ANTM (2.390)



Technical Corner

27 April 2021

PT Bank Negara Indonesia, Tbk

Rekomendasi: Buy on Weakness

---Harga ditutup membentuk pola black opening marubozu yang merupakan sinyal bearish continuation, stochastic memasuki zona oversold dan MACD histogram divergence negatif. **Target** harga beli pada level **5.675** dengan *resist* di level 5.800 kemudian 5.925.

BBNI (5.725)



PT Indo Tambangraya Megah, Tbk

Rekomendasi: Buy on Weakness

---Harga ditutup membentuk pola black opening marubozu yang merupakan sinyal bearish continuation, stochastic netral dan MACD divergence negatif. **Target** harga beli pada level **11.700** dengan *resist* di level 12.200 kemudian 12.500.

ITMG (11.850)



Technical Corner

27 April 2021

PT Tower Bersama Infrastructure, Tbk Rekomendasi: Buy

---Harga ditutup di atas EMA5,10 dan membentuk pola doji yang merupakan sinyal indecision, stochastic memasuki zona netral dan MACD histogram convergence positif. **Target** kenaikan harga pada level **2.640** kemudian 2.680 dengan *support* di level 2.560, *cut loss* jika *break* 2.520.

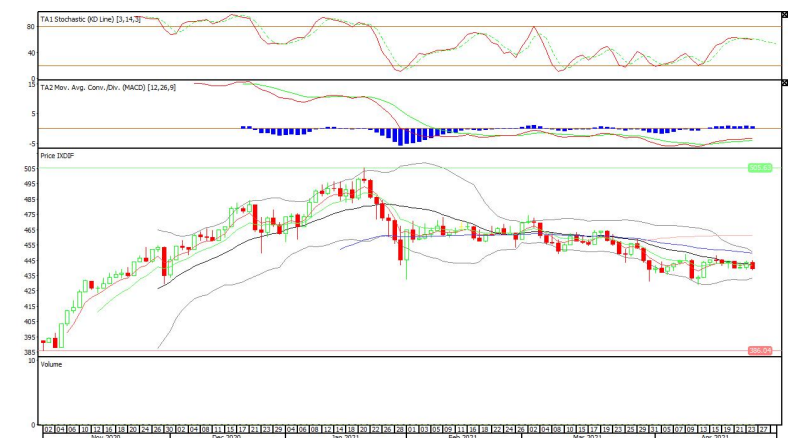
TBIG (2.600)



Danareka ETF Indonesia Top 40 Rekomendasi: Buy on Weakness

---Harga ditutup di bawah EMA5,10 dan membentuk pola long black marubozu yang merupakan sinyal bearish continuation, stochastic golden cross dan MACD histogram convergence positif. **Target** harga beli pada level **436** dengan *resist* di level 444 kemudian 448.

XDIF (440)



Technical Corner

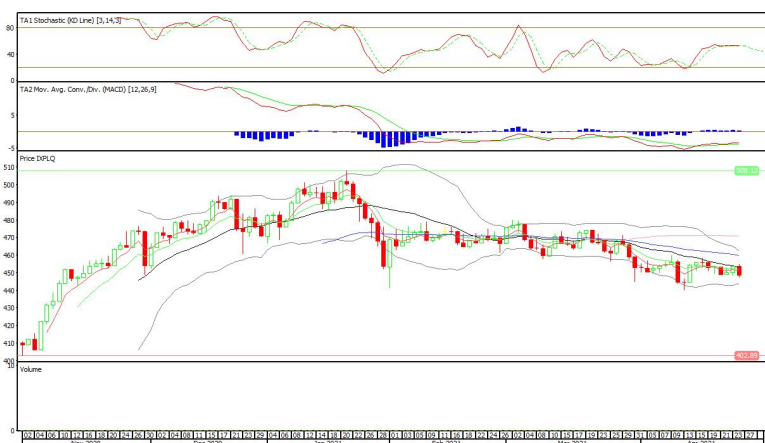
27 April 2021

Pinnacle Enhanced Liquid ETF

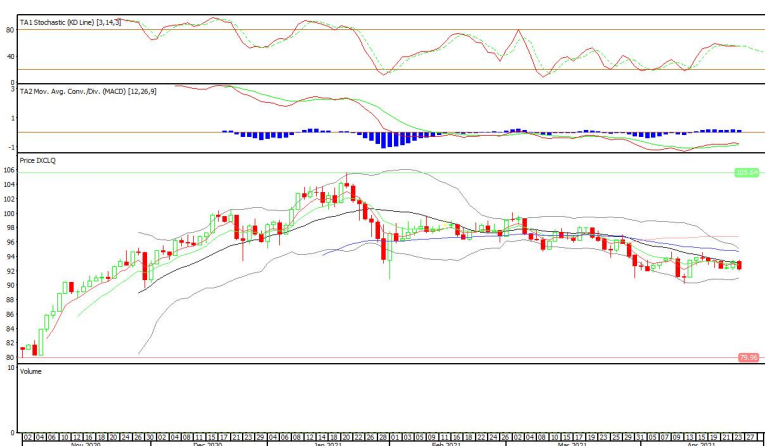
Rekomendasi: Buy on Weakness

---Harga ditutup di bawah EMA5,10 dan membentuk pola long black marubozu yang merupakan sinyal bearish continuation, stochastic death cross dan MACD histogram convergence positif. **Target** harga beli pada level **444** dengan resist di level 452 kemudian 456.

XPLQ (448)



XCLQ (92)



Cipta ETF Index LQ45

Rekomendasi: Buy on Weakness

---Harga ditutup di bawah EMA5,10 dan membentuk pola long black marubozu yang merupakan sinyal bearish continuation, stochastic golden cross dan MACD histogram convergence positif. **Target** harga beli pada level **91** dengan resist di level 93 kemudian 94.

Technical Corner

27 April 2021

PT INDO PREMIER SEKURITAS

Pacific Century Place 16th Floor SCBD Lot 10
Jl. Jend. Sudirman Kav. 52-53
Jakarta Selatan 12190 - Indonesia
p +62 21 5088 7200

ANALYSTS CERTIFICATION

The views expressed in this research report accurately reflect the analyst's personal views about any and all of the subject securities or issuers; and no part of the research analyst's compensation was, is, or will be, directly or indirectly, related to the specific recommendations or views expressed in the report.

DISCLAIMERS

This research is based on information obtained from sources believed to be reliable, but we do not make any representation or warranty nor accept any responsibility or liability as to its accuracy, completeness or correctness. Opinions expressed are subject to change without notice. This document is prepared for general circulation. Any recommendations contained in this document does not have regard to the specific investment objectives, financial situation and the particular needs of any specific addressee. This document is not and should not be construed as an offer or a solicitation of an offer to purchase or subscribe or sell any securities. PT. Indo Premier Sekuritas or its affiliates may seek or will seek investment banking or other business relationships with the companies in this report.

Refer to Important disclosures on the last of this report