

# Technical Corner

23 April 2021

## IHSG

**Range: 5.950 – 6.040**

---Indeks ditutup di bawah EMA5,10 dan membentuk pola small bearish candle, stochastic netral dan MACD histogram convergence positif. **Target** pelemahan indeks pada level **5.950** dan 5.905 dengan *resist* di level 6.040 dan 6.085.

## IHSG (5.994)



## PT Bumi Serpong Damai, Tbk

**Rekomendasi: Buy on Weakness**

---Harga ditutup membentuk pola long black marubozu yang merupakan sinyal bearish continuation, stochastic deathcross dan MACD convergence positif. **Target** harga beli pada level **1.140** dengan *resist* di level 1.165 kemudian 1.200.

## BSDE (1.155)



# Technical Corner

23 April 2021

## PT Mitra Adiperkasa, Tbk

### Rekomendasi: Buy

---Harga ditutup di atas EMA5,10 dan membentuk pola long white marubozu yang merupakan sinyal bullish continuation, stochastic netral dan MACD histogram convergence positif. **Target** kenaikan harga pada level **820** kemudian 835 dengan *support* di level 790, *cut loss* jika *break* 775.

## MAPI (805)

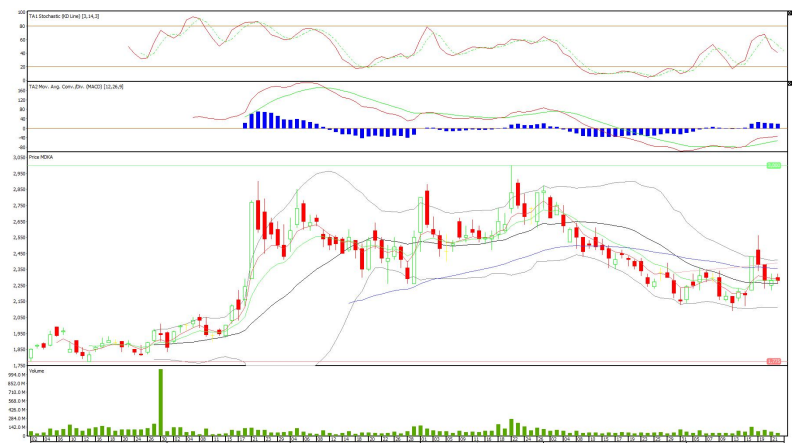


## PT Merdeka Copper Gold, Tbk

### Rekomendasi: Buy on Weakness

---Harga ditutup membentuk pola small bearish candle, stochastic netral dan MACD histogram convergence positif. **Target** harga beli pada level **2.250** dengan *resist* di level 2.320 kemudian 2.380.

## MDKA (2.280)



# Technical Corner

23 April 2021

## PT Ramayana Lestari Sentosa, Tbk

**Rekomendasi: Buy**

---Harga ditutup di atas EMA5,10 dan membentuk pola long white marubozu yang merupakan sinyal bullish continuation, stochastic netral dan MACD histogram divergence positif. **Target** kenaikan harga pada level **870** kemudian 890 dengan *support* di level 830, *cut loss* jika *break* 810.

## RALS (850)

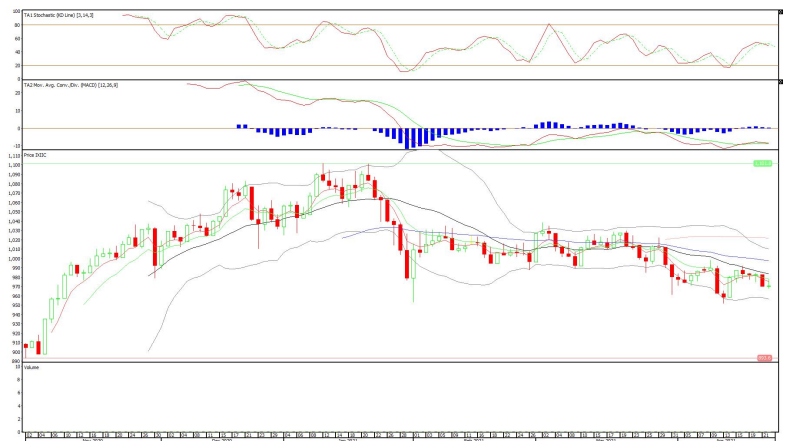


## Premier ETF Indonesia Consumer

**Rekomendasi: Buy on Weakness**

---Harga ditutup membentuk pola doji yang merupakan sinyal indecision, stochastic netral dan MACD histogram convergence positif. **Target** harga beli pada level **962** dengan *resist* di level 976 kemudian 986.

## XIIC (971)



# Technical Corner

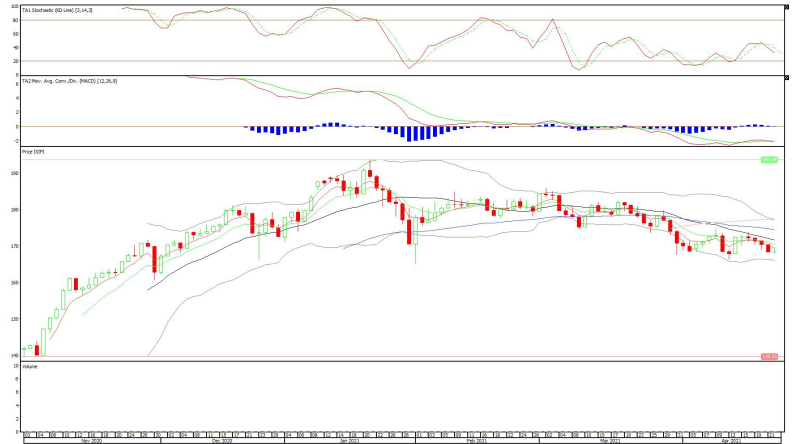
23 April 2021

## Premier ETF Pefindo i-Grade

**Rekomendasi: Buy on Weakness**

--- Harga ditutup membentuk pola doji yang merupakan sinyal indecision, stochastic netral dan MACD histogram convergence positif. **Target** harga beli pada level **166** dengan *resist* di level 170 kemudian 172.

## XIPI (168)

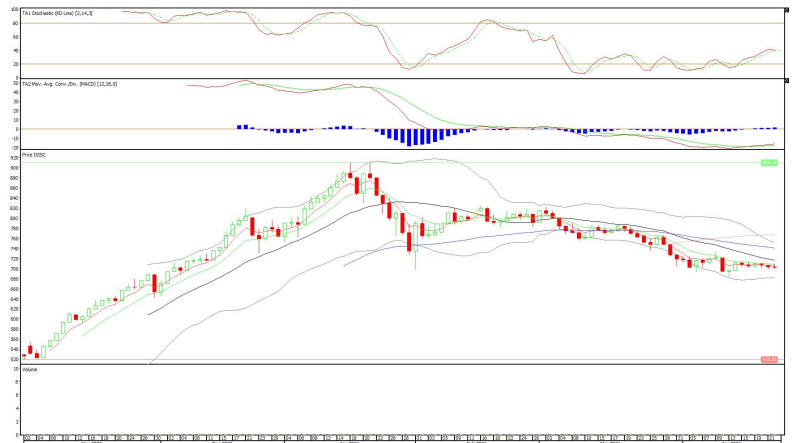


## Premier ETF Pefindo i-Grade

**Rekomendasi: Buy on Weakness**

---Harga ditutup membentuk pola doji yang merupakan sinyal indecision, stochastic deathcross dan MACD histogram divergence positif. **Target** harga beli pada level **694** dengan *resist* di level 711 kemudian 721.

## XISC (702)



# Technical Corner

---

23 April 2021

## **PT INDO PREMIER SEKURITAS**

Pacific Century Place 16th Floor SCBD Lot 10  
Jl. Jend. Sudirman Kav. 52-53  
Jakarta Selatan 12190 - Indonesia  
p +62 21 5088 7200

### **ANALYSTS CERTIFICATION**

The views expressed in this research report accurately reflect the analyst's personal views about any and all of the subject securities or issuers; and no part of the research analyst's compensation was, is, or will be, directly or indirectly, related to the specific recommendations or views expressed in the report.

### **DISCLAIMERS**

This research is based on information obtained from sources believed to be reliable, but we do not make any representation or warranty nor accept any responsibility or liability as to its accuracy, completeness or correctness. Opinions expressed are subject to change without notice. This document is prepared for general circulation. Any recommendations contained in this document does not have regard to the specific investment objectives, financial situation and the particular needs of any specific addressee. This document is not and should not be construed as an offer or a solicitation of an offer to purchase or subscribe or sell any securities. PT. Indo Premier Sekuritas or its affiliates may seek or will seek investment banking or other business relationships with the companies in this report.

**Refer to Important disclosures on the last of this report**