

Technical Corner

22 April 2021

IHSG

Range: 5.955 – 6.035

--Indeks ditutup membentuk pola small bearish candle, stochastic death cross dan MACD histogram convergence positif. **Target** kenaikan indeks pada level **6.035** dan 6.075 dengan *support* di level 5.955 dan 5.915.

IHSG (5.993)

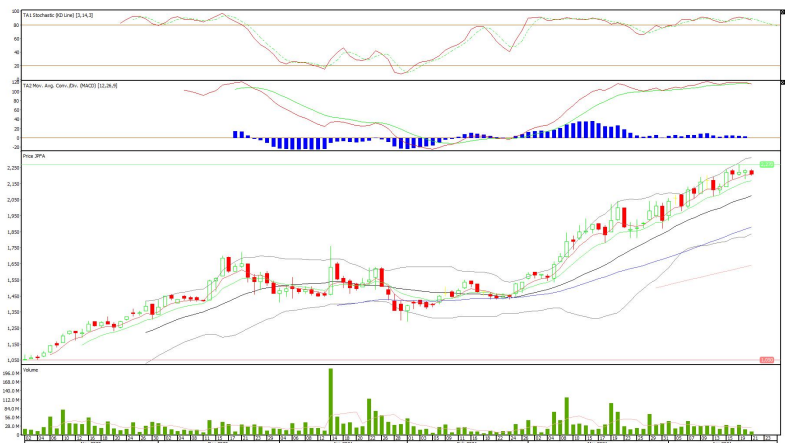


PT Japfa Comfeed Indonesia, Tbk

Rekomendasi: Buy on Weakness

---Harga ditutup membentuk pola small bearish candle, stochastic konsisten di zona overbought dan MACD bearish crossover. **Target** harga beli pada level **2.180** dengan *resist* di level 2.240 kemudian 2.270.

JPFA (2.210)



Technical Corner

22 April 2021

PT Erajaya Swasembada, Tbk

Rekomendasi: Buy

---Harga ditutup di atas EMA5,10 dan membentuk pola spinning top yang merupakan sinyal indecision, stochastic memasuki zona netral dan MACD histogram convergence positif. **Target** kenaikan harga pada level **640** kemudian 655 dengan *support* di level 610, *cut loss* jika *break* 595.

ERAA (625)

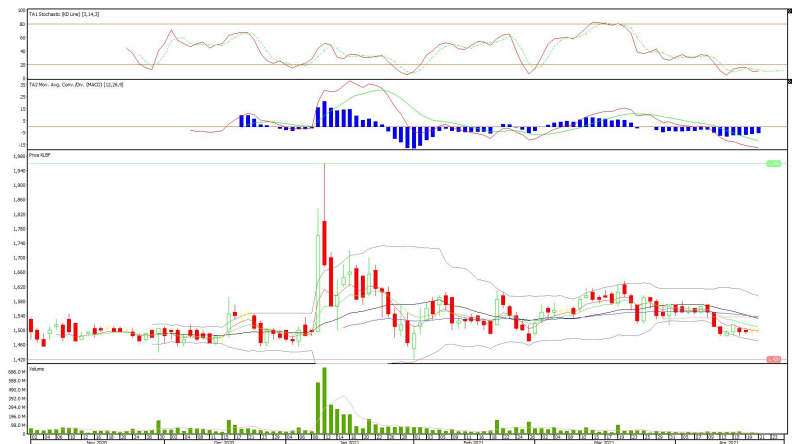


PT Kalbe Farma, Tbk

Rekomendasi: Buy on Weakness

---Harga ditutup membentuk pola doji yang merupakan sinyal indecision, stochastic oversold dan MACD histogram convergence negatif. **Target** harga beli pada level **1.485** dengan *resist* di level 1.515 kemudian 1.530.

KLBF (1.495)



Technical Corner

22 April 2021

PT United Tractors, Tbk

Rekomendasi: Buy

---Harga ditutup di atas EMA5,10 dan membentuk pola long white marubozu yang merupakan sinyal bullish continuation, stochastic netral dan MACD histogram divergence positif. **Target** kenaikan harga pada level **22.950** kemudian 23.425 dengan *support* di level 22.000, *cut loss* jika *break* 21.525.

UNTR (22.475)



Danareksa ETF Indonesia Top 40

Rekomendasi: Buy on Weakness

---Harga ditutup membentuk pola black marubozu yang merupakan sinyal bearish continuation, stochastic netral dan MACD histogram convergence negatif. **Target** harga beli pada level **437** dengan *resist* di level 445 kemudian 448.

XDIF (440)



Technical Corner

22 April 2021

Premier ETF IDX High Dividend 20

Rekomendasi: Buy on Weakness

---Harga ditutup membentuk pola black marubozu yang merupakan sinyal bearish continuation, stochastic deathcross dan MACD histogram convergence positif. **Target** harga beli pada level **435** dengan *resist* di level 442 kemudian 447.

XIHD (439)



Pinnacle Enhanced Sharia ETF

Rekomendasi: Buy on Weakness

---Harga ditutup di bawah EMA5,10 dan membentuk pola black opening marubozu yang merupakan sinyal bearish continuation, stochastic netral dan MACD histogram divergence negatif. **Target** harga beli pada level **369** dengan *resist* di level 375 kemudian 379.

XPES (372)



Technical Corner

22 April 2021

PT INDO PREMIER SEKURITAS

Pacific Century Place 16th Floor SCBD Lot 10
Jl. Jend. Sudirman Kav. 52-53
Jakarta Selatan 12190 - Indonesia
p +62 21 5088 7200

ANALYSTS CERTIFICATION

The views expressed in this research report accurately reflect the analyst's personal views about any and all of the subject securities or issuers; and no part of the research analyst's compensation was, is, or will be, directly or indirectly, related to the specific recommendations or views expressed in the report.

DISCLAIMERS

This research is based on information obtained from sources believed to be reliable, but we do not make any representation or warranty nor accept any responsibility or liability as to its accuracy, completeness or correctness. Opinions expressed are subject to change without notice. This document is prepared for general circulation. Any recommendations contained in this document does not have regard to the specific investment objectives, financial situation and the particular needs of any specific addressee. This document is not and should not be construed as an offer or a solicitation of an offer to purchase or subscribe or sell any securities. PT. Indo Premier Sekuritas or its affiliates may seek or will seek investment banking or other business relationships with the companies in this report.

Refer to Important disclosures on the last of this report