

Technical Corner

20 April 2021

IHSG

Range: 6.000 – 6.100

--Indeks ditutup membentuk pola long black marubozu yang merupakan sinyal bearish continuation, stochastic netral dan MACD histogram divergence positif. **Target** pelemahan indeks pada level **6.000** dan 5.950 dengan *resist* di level 6.100 dan 6.150.

IHSG (6.053)



PT Bank Negara Indonesia, Tbk

Rekomendasi: Buy on Weakness

---Harga ditutup membentuk pola small bearish candle, stochastic netral dan MACD histogram convergence positif. **Target** harga beli pada level **5.825** dengan *resist* di level 5.975 kemudian 6.100.

BBNI (5.875)



Technical Corner

20 April 2021

PT BPD Jawa Barat dan Banten, Tbk

Rekomendasi: Buy on Weakness

---Harga ditutup membentuk pola small bearish candle, stochastic netral dan MACD histogram divergence negatif. **Target** harga beli pada level **1.455** dengan *resist* di level 1.515 kemudian 1.540.

BJBR (1.480)



PT Bank Syariah Indonesia, Tbk

Rekomendasi: Buy

---Harga ditutup di atas EMA5,10 dan membentuk pola white opening marubozu yang merupakan sinyal bullish continuation, stochastic netral dan MACD histogram divergence positif. **Target** kenaikan harga pada level **2.500** kemudian 2.540 dengan *support* di level 2.420, *cut loss* jika *break* 2.380.

BRIS (2.460)



Technical Corner

20 April 2021

PT Waskita Karya, Tbk

Rekomendasi: Buy

---Harga ditutup di atas EMA5,10 dan membentuk pola white opening marubozu yang merupakan sinyal bullish continuation, stochastic netral dan MACD bullish crossover. **Target** kenaikan harga pada level **1.110** kemudian 1.140 dengan *support* di level 1.050, *cut loss* jika *break* 1020.

WSKT (1.080)

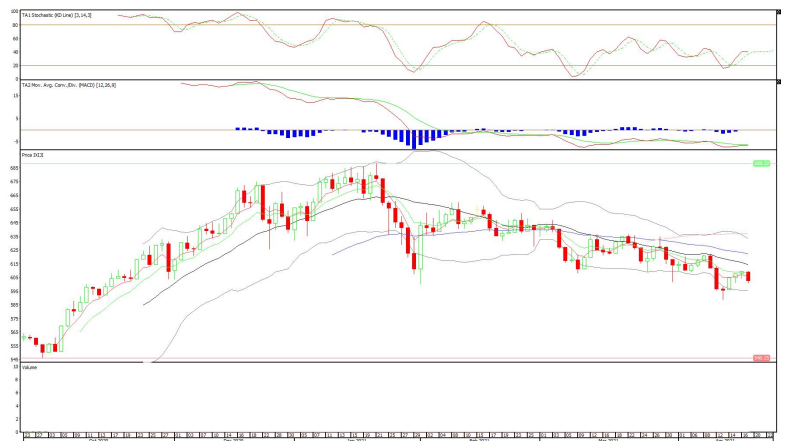


Syariah Premier ETF JII

Rekomendasi: Sell

---Harga ditutup di bawah EMA5,10 dan membentuk pola long black marubozu yang merupakan sinyal bearish continuation, stochastic netral dan MACD histogram convergence negatif. **Target** pelemahan harga pada level **597** dan 591 dengan *resist* di level 609 kemudian 615.

XIJI (603)



Technical Corner

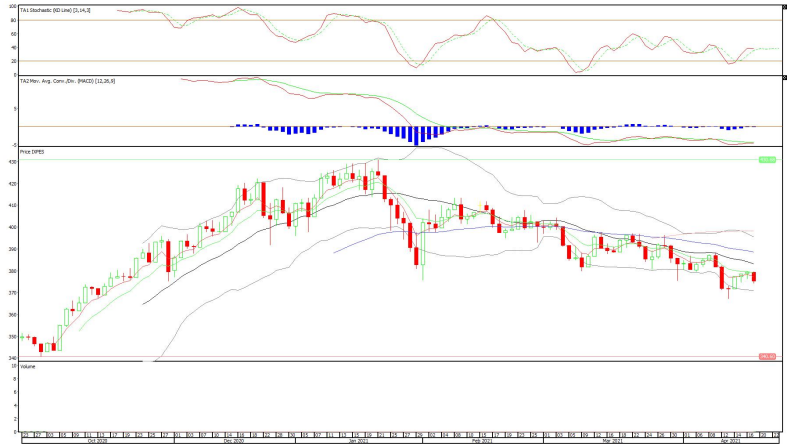
20 April 2021

Pinnacle Enhanced Sharia ETF

Rekomendasi: Sell

---Harga ditutup di bawah EMA5,10 dan membentuk pola long black marubozu yang merupakan sinyal bearish continuation, stochastic netral dan MACD histogram divergence negatif. **Target** pelemahan harga pada level **371** dan 367 dengan *resist* di level 379 kemudian 383.

XPES (375)



Pinnacle Indonesia ESG ETF

Rekomendasi: Sell

---Harga ditutup di bawah EMA5,10 dan membentuk pola long black marubozu yang merupakan sinyal bearish continuation, stochastic netral dan MACD histogram convergence positif. **Target** pelemahan harga pada level **368** dan 365 dengan *resist* di level 374 kemudian 377.

XPSG (371)



Technical Corner

20 April 2021

PT INDO PREMIER SEKURITAS

Pacific Century Place 16th Floor SCBD Lot 10
Jl. Jend. Sudirman Kav. 52-53
Jakarta Selatan 12190 - Indonesia
p +62 21 5088 7200

ANALYSTS CERTIFICATION

The views expressed in this research report accurately reflect the analyst's personal views about any and all of the subject securities or issuers; and no part of the research analyst's compensation was, is, or will be, directly or indirectly, related to the specific recommendations or views expressed in the report.

DISCLAIMERS

This research is based on information obtained from sources believed to be reliable, but we do not make any representation or warranty nor accept any responsibility or liability as to its accuracy, completeness or correctness. Opinions expressed are subject to change without notice. This document is prepared for general circulation. Any recommendations contained in this document does not have regard to the specific investment objectives, financial situation and the particular needs of any specific addressee. This document is not and should not be construed as an offer or a solicitation of an offer to purchase or subscribe or sell any securities. PT. Indo Premier Sekuritas or its affiliates may seek or will seek investment banking or other business relationships with the companies in this report.

Refer to Important disclosures on the last of this report