

Technical Corner

16 April 2021

IHSG

Range: 6.030 – 6.130

---Indeks ditutup di atas EMA5,10 dan membentuk pola small bullish candle, stochastic netral dan MACD bullish crossover. **Target** kenaikan indeks pada level **6.130** kemudian 6.180 dengan *support* di level 6.030 dan 5.980.

IHSG (6.080)



PT Bumi Serpong Damai, Tbk

Rekomendasi: Buy

---Harga ditutup membentuk pola spinning top yang merupakan sinyal indecision, stochastic netral dan MACD histogram divergence negatif. **Target** kenaikan harga pada level **1.165** kemudian 1.195 dengan *support* di level 1.105, *cut loss* jika *break* 1.075.

BSDE (1.135)



Technical Corner

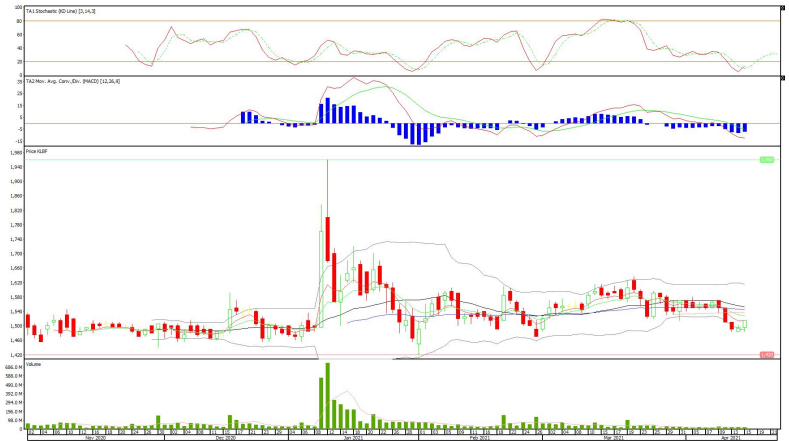
16 April 2021

PT Kalbe Farma, Tbk

Rekomendasi: Buy

---Harga ditutup di atas EMA5 dan membentuk pola white closing marubozu yang merupakan sinyal bullish continuation, stochastic golden cross dan MACD histogram convergence negatif. **Target** kenaikan harga pada level **1.545** kemudian 1.575 dengan *support* di level 1.485, *cut loss* jika *break* 1.455.

KLBF (1.515)



PT Ramayana Lestari Sentosa, Tbk

Rekomendasi: Buy

---Harga ditutup di atas EMA5 dan membentuk pola white closing marubozu yang merupakan sinyal bullish continuation, stochastic golden cross dan MACD histogram convergence negatif. **Target** kenaikan harga pada level **785** kemudian 810 dengan *support* di level 735, *cut loss* jika *break* 710.

RALS (760)



Technical Corner

16 April 2021

PT Semen Indonesia, Tbk

Rekomendasi: Buy on Weakness

---Harga ditutup membentuk pola black opening marubozu yang merupakan sinyal bearish continuation namun masih di atas EMA5,10, stochastic netral dan MACD histogram divergence positif. **Target** harga beli pada level **10.650** dengan *resist* di level 11.050 kemudian 11.200.

SMGR (10.825)



Premier ETF Indonesia Consumer

Rekomendasi: Buy

---Harga ditutup di atas EMA5,10 dan membentuk pola white closing marubozu yang merupakan sinyal bullish continuation, stochastic golden cross dan MACD histogram convergence negatif. **Target** kenaikan harga pada level **995** kemudian 1.003 dengan *support* di level 979, *cut loss* jika *break* 971.

XIIC (987)



Technical Corner

16 April 2021

Premier ETF IDX 30

Rekomendasi: Buy

---Harga ditutup di atas EMA5,10 dan membentuk pola small bullish candle, stochastic memasuki zona netral dan MACD bullish crossover. **Target** kenaikan harga pada level **511** kemudian 518 dengan *support* di level 497, *cut loss* jika *break* 490.

XIIT (504)



ETF MNC36 Likuid

Rekomendasi: Buy

---Harga ditutup di atas EMA5,10 dan membentuk pola small bullish candle, stochastic golden cross dan MACD bullish crossover. **Target** kenaikan harga pada level **454** kemudian 459 dengan *support* di level 444, *cut loss* jika *break* 439.

XMTS (449)



Technical Corner

16 April 2021

PT INDO PREMIER SEKURITAS

Pacific Century Place 16th Floor SCBD Lot 10
Jl. Jend. Sudirman Kav. 52-53
Jakarta Selatan 12190 - Indonesia
p +62 21 5088 7200

ANALYSTS CERTIFICATION

The views expressed in this research report accurately reflect the analyst's personal views about any and all of the subject securities or issuers; and no part of the research analyst's compensation was, is, or will be, directly or indirectly, related to the specific recommendations or views expressed in the report.

DISCLAIMERS

This research is based on information obtained from sources believed to be reliable, but we do not make any representation or warranty nor accept any responsibility or liability as to its accuracy, completeness or correctness. Opinions expressed are subject to change without notice. This document is prepared for general circulation. Any recommendations contained in this document does not have regard to the specific investment objectives, financial situation and the particular needs of any specific addressee. This document is not and should not be construed as an offer or a solicitation of an offer to purchase or subscribe or sell any securities. PT. Indo Premier Sekuritas or its affiliates may seek or will seek investment banking or other business relationships with the companies in this report.

Refer to Important disclosures on the last of this report