

# Technical Corner

8 April 2021

## IHSG

**Range: 6.000 – 6.080**

---Indeks ditutup membentuk pola small bullish candle, stochastic netral dan MACD histogram convergence negatif. **Target** kenaikan indeks pada level **6.080** dan 6.120 dengan *support* di level 6.000 kemudian 5.960.

## IHSG (6.037)



## PT BPD Jawa Barat dan Banten, Tbk

**Rekomendasi: Buy on Weakness**

---Harga ditutup membentuk pola small bearish candle namun masih di atas EMA5,10, stochastic memasuki zona overbought dan MACD histogram divergence positif. **Target** harga beli pada level 1.560 dengan *resist* di level 1.610 kemudian 1.660.

## BJBR (1.580)



# Technical Corner

8 April 2021

## PT Mitra Adiperkasa, Tbk

### Rekomendasi: Buy

---Harga ditutup di atas EMA5,10 dan membentuk pola long white marubozu yang merupakan sinyal bullish continuation, stochastic netral dan MACD histogram convergence negatif. **Target** kenaikan harga pada level **810** kemudian 830 dengan *support* di level 770, *cut loss* jika *break* 750.

## MAPI (790)



## PT Surya Citra Media, Tbk

### Rekomendasi: Buy

---Harga ditutup di atas EMA5,10 dan membentuk pola white closing marubozu yang merupakan sinyal bullish continuation, stochastic netral dan MACD histogram divergence positif. **Target** kenaikan harga pada level **1.825** kemudian 1.860 dengan *support* di level 1.755, *cut loss* jika *break* 1.720.

## SCMA (1.790)



# Technical Corner

8 April 2021

## PT Bank Mandiri, Tbk

**Rekomendasi: Buy**

---Harga ditutup di atas EMA5 dan membentuk pola small bullish candle, stochastic memasuki zona netral dan MACD histogram convergence negatif.

**Target** kenaikan harga pada level **6.425** kemudian 6.525 dengan *support* di level 6.225, *cut loss* jika *break* 6.125.

## BMRI (6.325)



## XCLQ (93)

## Cipta ETF Index LQ45

**Rekomendasi: Buy**

---Harga ditutup di atas EMA5 dan membentuk pola small bullish candle, stochastic netral dan MACD histogram convergence negatif. **Target** kenaikan harga pada level **94** kemudian 95 dengan *support* di level 92, *cut loss* jika *break* 91.



# Technical Corner

8 April 2021

## Syariah Premier ETF JII

### Rekomendasi: Buy

---Harga ditutup di atas EMA5 dan membentuk pola long white marubozu yang merupakan sinyal bullish continuation, stochastic golden cross dan MACD histogram convergence negatif.

**Target** kenaikan harga pada level **620** kemudian 623 dengan *support* di level 614, *cut loss* jika break 611.

## XIJI (617)

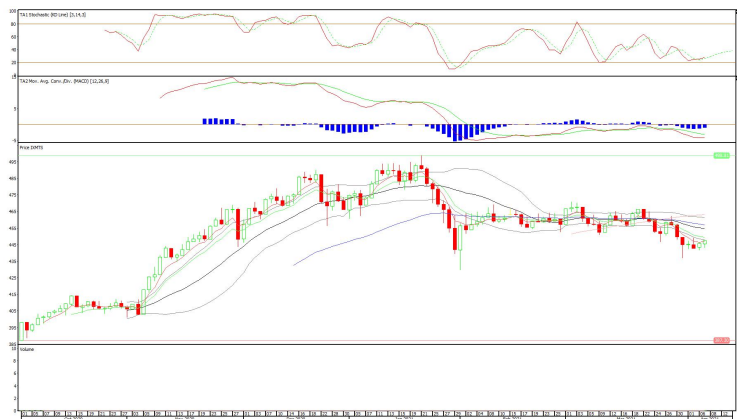


## XMTS (447)

## ETF MNC36 Likuid

### Rekomendasi: Buy

---Harga ditutup di atas EMA5 dan membentuk pola small bullish candle, stochastic netral dan MACD histogram convergence negatif. **Target** kenaikan harga pada level **452** kemudian 457 dengan *support* di level 442, *cut loss* jika break 437.



# Technical Corner

8 April 2021

## **PT INDO PREMIER SEKURITAS**

Pacific Century Place 16th Floor SCBD Lot 10  
Jl. Jend. Sudirman Kav. 52-53  
Jakarta Selatan 12190 - Indonesia  
p +62 21 5088 7200

### **ANALYSTS CERTIFICATION**

The views expressed in this research report accurately reflect the analyst's personal views about any and all of the subject securities or issuers; and no part of the research analyst's compensation was, is, or will be, directly or indirectly, related to the specific recommendations or views expressed in the report.

### **DISCLAIMERS**

This research is based on information obtained from sources believed to be reliable, but we do not make any representation or warranty nor accept any responsibility or liability as to its accuracy, completeness or correctness. Opinions expressed are subject to change without notice. This document is prepared for general circulation. Any recommendations contained in this document does not have regard to the specific investment objectives, financial situation and the particular needs of any specific addressee. This document is not and should not be construed as an offer or a solicitation of an offer to purchase or subscribe or sell any securities. PT. Indo Premier Sekuritas or its affiliates may seek or will seek investment banking or other business relationships with the companies in this report.

**Refer to Important disclosures on the last of this report**