

Technical Corner

5 April 2021

IHSG

Range: 5.960 – 6.060

---Indeks ditutup dengan membentuk pola small bullish candle, stochastic oversold dan MACD histogram divergence negatif. **Target** kenaikan indeks pada level **6.060** dan 6.110 dengan *support* di level 5.960 kemudian 5.910.

IHSG (6.011)



PT Bank KB Bukopin, Tbk

Rekomendasi: Buy

---Harga ditutup di atas EMA5,10 dan membentuk pola white opening marubozu yang merupakan sinyal bullish continuation, stochastic memasuki zona netral dan MACD bullish crossover. **Target** kenaikan harga pada level **565** kemudian 610 dengan *support* di level 486, *cut loss* jika break 445.

BBKP (525)



Technical Corner

5 April 2021

PT Ciputra Development, Tbk

Rekomendasi: Buy

---Harga ditutup di atas EMA5,10 dan membentuk pola white closing marubozu yang merupakan sinyal bullish continuation, stochastic netral dan MACD histogram convergence negatif. **Target** kenaikan harga pada level **1.180** kemudian 1.220 dengan *support* di level 1.100, *cut loss* jika *break* 1.060.

CTRA (1.140)



PT Indofood Sukses Makmur, Tbk

Rekomendasi: Buy

---Harga ditutup di atas EMA5,10 dan membentuk pola long white marubozu yang merupakan sinyal bullish continuation, stochastic memasuki zona netral dan MACD histogram convergence positif. **Target** kenaikan harga pada level **6.825** kemudian 6.925 dengan *support* di level 6.625, *cut loss* jika *break* 6.525.

INDF (6.725)



Technical Corner

5 April 2021

PT Bukit Asam, Tbk

Rekomendasi: Buy

---Harga ditutup di atas MA100 dan membentuk pola doji yang merupakan sinyal indecision, stochastic oversold dan MACD histogram convergence negatif.

Target kenaikan harga pada level **2.700** kemudian 2.750 dengan *support* di level 2.600, *cut loss* jika *break* 2.550.

PTBA (2.650)

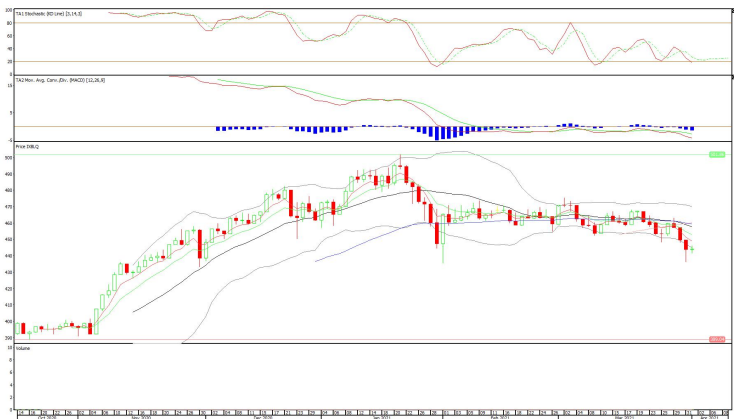


XBLQ (444)

Batavia Smart Liquid ETF

Rekomendasi: Buy

---Harga ditutup membentuk pola doji yang merupakan sinyal indecision, stochastic oversold dan MACD histogram divergence negatif. **Target** kenaikan harga pada level **448** kemudian 452 dengan *support* di level 440, *cut loss* jika *break* 436.



Technical Corner

5 April 2021

Danareksa ETF Indonesia Top 40

Rekomendasi: Buy

---Harga ditutup membentuk pola doji yang merupakan sinyal indecision, stochastic oversold dan MACD histogram divergence negatif. **Target** kenaikan harga pada level **445** kemudian 450 dengan *support* di level 435, *cut loss* jika *break* 430.

XDIF (440)

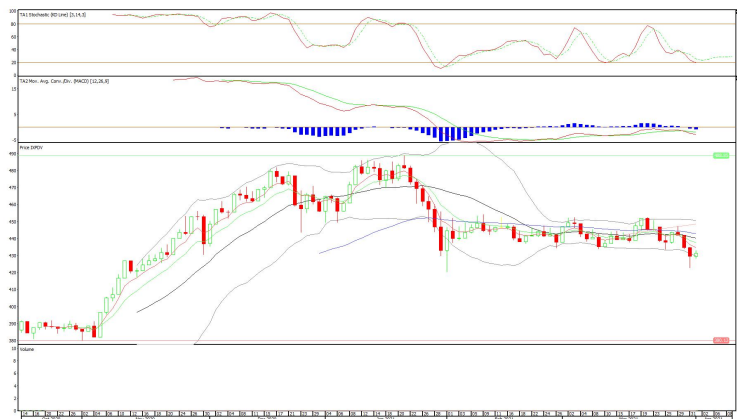


Pinnacle Core High Dividend ETF

Rekomendasi: Buy

---Harga ditutup membentuk pola small bullish candle, stochastic oversold dan MACD histogram divergence negatif. **Target** kenaikan harga pada level **436** kemudian 441 dengan *support* di level 426, *cut loss* jika *break* 421.

XPDV (431)



Technical Corner

5 April 2021

PT INDO PREMIER SEKURITAS

Pacific Century Place 16th Floor SCBD Lot 10
Jl. Jend. Sudirman Kav. 52-53
Jakarta Selatan 12190 - Indonesia
p +62 21 5088 7200

ANALYSTS CERTIFICATION

The views expressed in this research report accurately reflect the analyst's personal views about any and all of the subject securities or issuers; and no part of the research analyst's compensation was, is, or will be, directly or indirectly, related to the specific recommendations or views expressed in the report.

DISCLAIMERS

This research is based on information obtained from sources believed to be reliable, but we do not make any representation or warranty nor accept any responsibility or liability as to its accuracy, completeness or correctness. Opinions expressed are subject to change without notice. This document is prepared for general circulation. Any recommendations contained in this document does not have regard to the specific investment objectives, financial situation and the particular needs of any specific addressee. This document is not and should not be construed as an offer or a solicitation of an offer to purchase or subscribe or sell any securities. PT. Indo Premier Sekuritas or its affiliates may seek or will seek investment banking or other business relationships with the companies in this report.

Refer to Important disclosures on the last of this report