

# Technical Corner

31 March 2021

## IHSG

**Range: 6.000 – 6.140**

---Indeks ditutup di bawah EMA5,10 dan membentuk pola long black marubozu yang merupakan sinyal bearish continuation, stochastic death cross dan MACD histogram divergence negatif.

**Target** penurunan indeks pada level **6.000** dan 5.930 dengan *resist* di level 6.140 kemudian 6.210.

## IHSG (6.071)

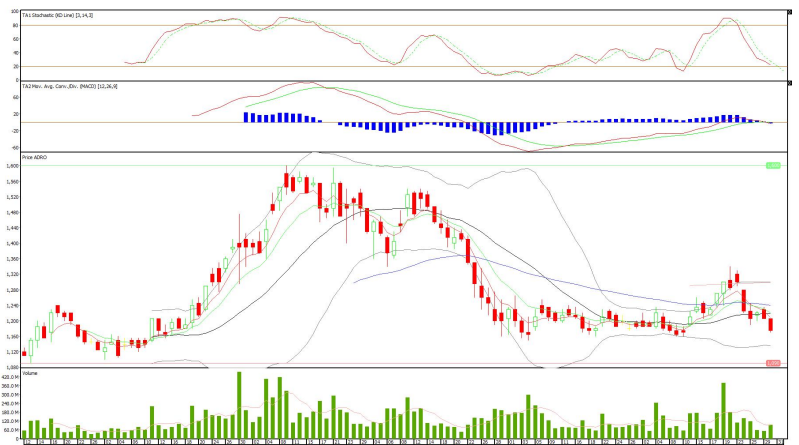


## PT Adaro Energy, Tbk

**Rekomendasi: Buy on Weakness**

---Harga ditutup membentuk pola black opening marubozu yang merupakan sinyal bearish continuation, stochastic netral dan MACD bearish crossover. **Target** harga beli pada level **1.160** dengan *resist* di level 1.205 kemudian 1.235.

## ADRO (1.175)



# Technical Corner

31 March 2021

## PT Indofood Sukses Makmur,Tbk

**Rekomendasi: Buy on Weakness**

---Harga ditutup membentuk pola long black marubozu yang merupakan sinyal bearish continuation namun masih di atas EMA5,10, stochastic death cross dan MACD histogram convergence positif. **Target** harga beli pada level **6.625** dengan *resist* di level 6.800 kemudian 6.900.

## INDF (6.700)

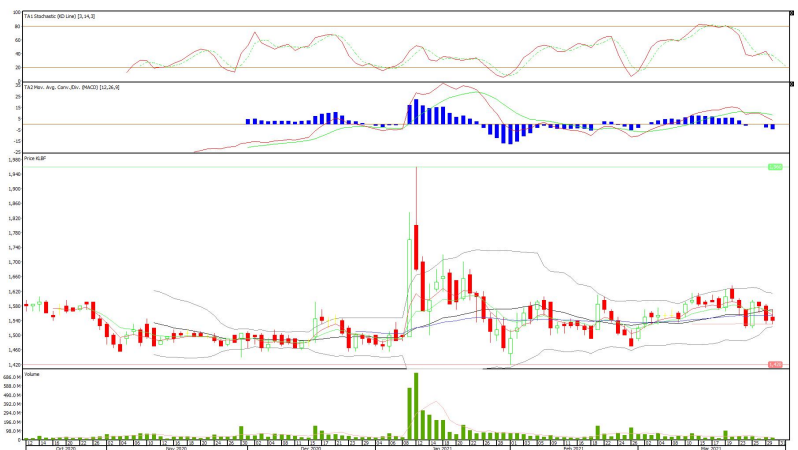


## PT Kalbe Farma, Tbk

**Rekomendasi: Buy on Weakness**

---Harga ditutup tertahan MA100 membentuk pola small bearish candle, stochastic death cross dan MACD histogram divergence negatif. **Target** harga beli pada level **1.530** dengan *resist* di level 1.570 kemudian 1.600.

## KLBF (1.540)



# Technical Corner

31 March 2021

## PT Telkom Indonesia, Tbk

**Rekomendasi: Buy on Weakness**

---Harga ditutup membentuk pola long black marubozu yang merupakan sinyal bearish continuation namun masih di atas EMA50, stochastic death cross dan MACD histogram divergence negatif. **Target** harga beli pada level **3.340** dengan *resist* di level 3.430 kemudian 3.500.

## TLKM (3.380)



## Cipta ETF Index LQ45

**Rekomendasi: Sell**

---Harga ditutup di bawah EMA5,10 dan membentuk pola long black marubozu yang merupakan sinyal bearish continuation, stochastic death cross dan MACD histogram divergence negatif. **Target** penurunan harga pada level **92** kemudian **90** dengan *resist* di level 96 kemudian 97.

## XCLQ (94)



# Technical Corner

31 March 2021

## Syariah Premier ETF JII

**Rekomendasi: Buy on Weakness**

---Harga ditutup membentuk pola long black marubozu yang merupakan sinyal bearish continuation, stochastic netral and MACD histogram convergence positif. **Target** harga beli pada level **610** dengan *resist* di level 626 kemudian 636.

## XIJI (618)



## Pinnacle Enhanced Sharia ETF

**Rekomendasi: Buy on Weakness**

---Harga ditutup membentuk pola long black marubozu yang merupakan sinyal bearish continuation, stochastic netral dan MACD histogram convergence positif. **Target** harga beli pada level **382** dengan *resist* di level 391 kemudian 396.

## XPES (386)



# Technical Corner

---

31 March 2021

## **PT INDO PREMIER SEKURITAS**

Pacific Century Place 16th Floor SCBD Lot 10  
Jl. Jend. Sudirman Kav. 52-53  
Jakarta Selatan 12190 - Indonesia  
p +62 21 5088 7200

### **ANALYSTS CERTIFICATION**

The views expressed in this research report accurately reflect the analyst's personal views about any and all of the subject securities or issuers; and no part of the research analyst's compensation was, is, or will be, directly or indirectly, related to the specific recommendations or views expressed in the report.

### **DISCLAIMERS**

This research is based on information obtained from sources believed to be reliable, but we do not make any representation or warranty nor accept any responsibility or liability as to its accuracy, completeness or correctness. Opinions expressed are subject to change without notice. This document is prepared for general circulation. Any recommendations contained in this document does not have regard to the specific investment objectives, financial situation and the particular needs of any specific addressee. This document is not and should not be construed as an offer or a solicitation of an offer to purchase or subscribe or sell any securities. PT. Indo Premier Sekuritas or its affiliates may seek or will seek investment banking or other business relationships with the companies in this report.

**Refer to Important disclosures on the last of this report**