

Technical Corner

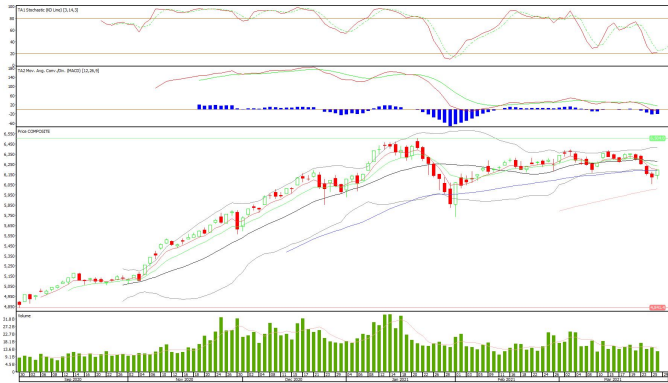
29 March 2021

IHSG

Range: 6.150 – 6.250

---Indeks ditutup di atas EMA50 dan membentuk pola white closing marbozu yang merupakan sinyal bullish continuation, stochastic netral dan MACD histogram convergence negatif. **Target** kenaikan indeks pada level **6.250** kemudian 6.300 dengan *support* di level 6.150 kemudian 6.100.

IHSG (6.196)



PT Indo Tambangraya Megah, Tbk

Rekomendasi: Buy

---Harga ditutup di atas EMA5,10 dan membentuk pola long white marubozu yang merupakan sinyal bullish continuation, stochastic netral dan MACD histogram convergence positif. **Target** kenaikan harga pada level **12.500** kemudian 12.800 dengan *support* di level 11.900, *cut loss* jika *break* 11.600.

ITMG (12.200)



Technical Corner

29 March 2021

PT Indofood CBP Sukses Makmur, Tbk

Rekomendasi: Buy

---Harga ditutup di atas EMA5,10 dan membentuk pola white closing marubozu yang merupakan sinyal bullish continuation, stochastic overbought dan MACD histogram convergence positif.

Target kenaikan harga pada level **9.225** kemudian 9.350 dengan *support* di level 8.975, *cut loss* jika *break* 8.850.

ICBP (9.100)



PT Ramayana Lestari Sentosa, Tbk

Rekomendasi: Buy

---Harga ditutup di atas EMA5,10 dan membentuk pola long white marubozu yang merupakan sinyal bullish continuation, stochastic netral dan MACD histogram convergence negatif.

Target kenaikan harga pada level **815** kemudian 830 dengan *support* di level 785, *cut loss* jika *break* 770.

RALS (800)



Technical Corner

29 March 2021

PT Summarecon Agung, Tbk

Rekomendasi: Buy

---Harga ditutup di atas EMA5,10 dan membentuk pola long white marubozu yang merupakan sinyal bullish continuation, stochastic golden cross dan MACD histogram convergence negatif. **Target** kenaikan harga pada level **1.040** kemudian 1.075 dengan *support* di level 970, *cut loss* jika *break* 935.

SMRA (1.005)

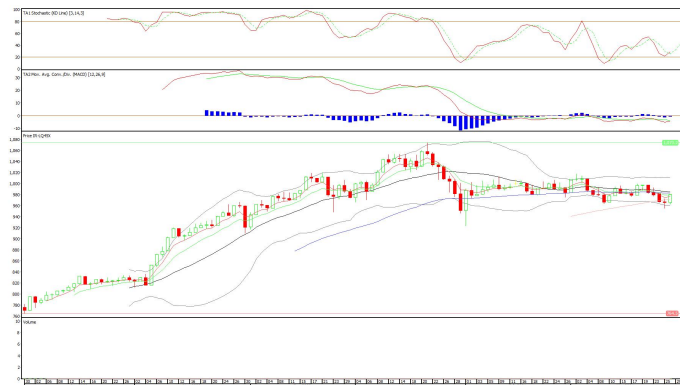


Premier ETF LQ-45

Rekomendasi: Buy

---Harga ditutup di atas EMA5,10 dan membentuk pola long white marubozu yang merupakan sinyal bullish continuation, stochastic golden cross and MACD histogram convergence negatif. **Target** kenaikan harga pada level **987** kemudian 994 dengan *support* di level 973, *cut loss* jika *break* 966.

R-LQ45X (980)



Technical Corner

29 March 2021

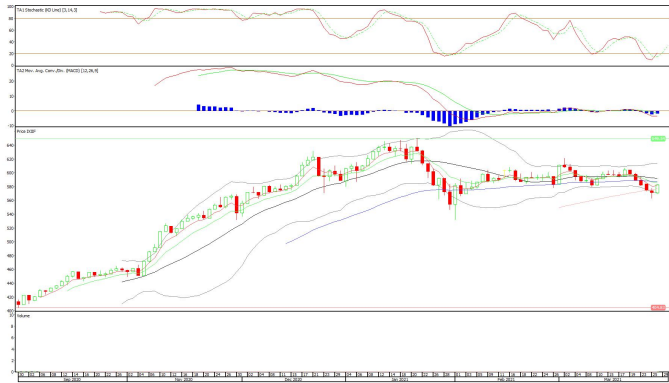
Premier ETF Indonesia Financial

Rekomendasi: Buy

---Harga ditutup di atas EMA5 dan membentuk pola long white marubozu yang merupakan sinyal bullish continuation, stochastic golden cross dan MACD histogram convergence negatif.

Target kenaikan harga pada level **589** kemudian 595 dengan *support* di level 577, *cut loss* jika *break* 571.

XIIF (583)



XPLC (449)

Pinnacle Indonesia Large Cap ETF

Rekomendasi: Buy

---Harga ditutup di atas EMA5,10 dan membentuk pola long white marubozu yang merupakan sinyal bullish continuation, stochastic golden cross dan MACD histogram convergence negatif.

Target kenaikan harga pada level **452** kemudian 455 dengan *support* di level 446, *cut loss* jika *break* 443.



Technical Corner

29 March 2021

PT INDO PREMIER SEKURITAS

Pacific Century Place 16th Floor SCBD Lot 10
Jl. Jend. Sudirman Kav. 52-53
Jakarta Selatan 12190 - Indonesia
p +62 21 5088 7200

ANALYSTS CERTIFICATION

The views expressed in this research report accurately reflect the analyst's personal views about any and all of the subject securities or issuers; and no part of the research analyst's compensation was, is, or will be, directly or indirectly, related to the specific recommendations or views expressed in the report.

DISCLAIMERS

This research is based on information obtained from sources believed to be reliable, but we do not make any representation or warranty nor accept any responsibility or liability as to its accuracy, completeness or correctness. Opinions expressed are subject to change without notice. This document is prepared for general circulation. Any recommendations contained in this document does not have regard to the specific investment objectives, financial situation and the particular needs of any specific addressee. This document is not and should not be construed as an offer or a solicitation of an offer to purchase or subscribe or sell any securities. PT. Indo Premier Sekuritas or its affiliates may seek or will seek investment banking or other business relationships with the companies in this report.

Refer to Important disclosures on the last of this report