

Technical Corner

26 March 2021

IHSG

Range: 6.080 – 6.160

---Indeks ditutup di bawah EMA5,10 dan membentuk pola hammer yang merupakan sinyal bullish reversal, stochastic oversold dan MACD histogram divergence negatif. **Target** kenaikan indeks pada level **6.160** kemudian 6.200 dengan *support* di level 6.080 kemudian 6.040.

IHSG (6.123)



PT BPD Jawa Barat dan Banten, Tbk

Rekomendasi: Buy on Weakness

---Harga ditutup di atas MA100 dan membentuk pola doji yang merupakan sinyal indecision, stochastic netral dan MACD histogram divergence negatif. **Target** harga beli pada level **1.510** dengan *resist* di level 1.550 kemudian 1.585.

BJBR (1.530)



Technical Corner

26 March 2021

PT Indocement Tunggal Prakarsa, Tbk

Rekomendasi: Buy

---Harga ditutup di atas EMA10 dan membentuk pola long white marubozu yang merupakan sinyal bullish continuation, stochastic netral dan MACD histogram convergence positif. **Target** kenaikan harga pada level **13.375** kemudian 13.575 dengan *support* di level 12.975, *cut loss* jika *break* 12.775.

INTP (13.175)



PT Japfa Comfeed Indonesia, Tbk

Rekomendasi: Buy

---Harga ditutup di atas EMA10 dan membentuk pola doji yang merupakan sinyal indecision, stochastic netral dan MACD histogram convergence positif. **Target** kenaikan harga pada level **1.925** kemudian 1.975 dengan *support* di level 1.825, *cut loss* jika *break* 1.775.

JPFA (1.875)



Technical Corner

26 March 2021

PT Salim Ivomas Pratama, Tbk

Rekomendasi: Buy on Weakness

---Harga ditutup di atas EMA10 dan membentuk pola doji yang merupakan sinyal indecision, stochastic death cross dan MACD bearish crossover. **Target** harga beli pada level **500** dengan *resist* di level 520 kemudian 530.

SIMP (510)



Premier ETF Indonesia Consumer

Rekomendasi: Buy on Weakness

---Harga ditutup membentuk pola hammer yang merupakan sinyal bullish reversal, stochastic netral dan MACD bearish crossover. **Target** harga beli pada level **992** dengan *resist* di level 1.004 kemudian 1.011.

XIIC (997)



Technical Corner

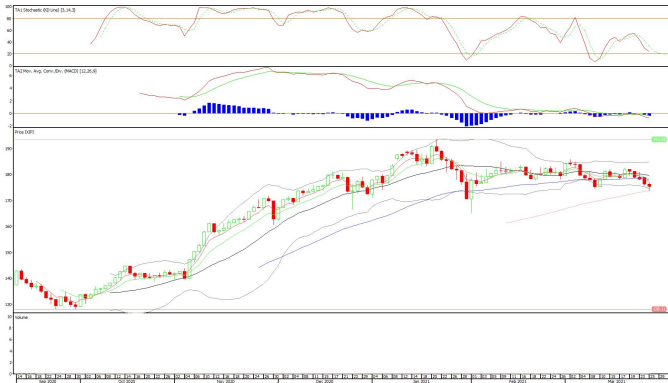
26 March 2021

Premier ETF Pefindo i-Grade

Rekomendasi: Buy on Weakness

---Harga ditutup tertahan MA100 dan membentuk pola small bearish candle, stochastic netral dan MACD histogram divergence negatif. **Target** harga beli pada level **174** dengan *resist* di level 177 kemudian 179.

XIPI (175)



Pinnacle Core High Dividend ETF

Rekomendasi: Buy on Weakness

---Harga ditutup membentuk pola spinning top yang merupakan sinyal indecision, stochastic netral dan MACD histogram convergence positif. **Target** harga beli pada level **435** dengan *resist* di level 442 kemudian 446.

XPDV (438)



Technical Corner

26 March 2021

PT INDO PREMIER SEKURITAS

Pacific Century Place 16th Floor SCBD Lot 10
Jl. Jend. Sudirman Kav. 52-53
Jakarta Selatan 12190 - Indonesia
p +62 21 5088 7200

ANALYSTS CERTIFICATION

The views expressed in this research report accurately reflect the analyst's personal views about any and all of the subject securities or issuers; and no part of the research analyst's compensation was, is, or will be, directly or indirectly, related to the specific recommendations or views expressed in the report.

DISCLAIMERS

This research is based on information obtained from sources believed to be reliable, but we do not make any representation or warranty nor accept any responsibility or liability as to its accuracy, completeness or correctness. Opinions expressed are subject to change without notice. This document is prepared for general circulation. Any recommendations contained in this document does not have regard to the specific investment objectives, financial situation and the particular needs of any specific addressee. This document is not and should not be construed as an offer or a solicitation of an offer to purchase or subscribe or sell any securities. PT. Indo Premier Sekuritas or its affiliates may seek or will seek investment banking or other business relationships with the companies in this report.

Refer to Important disclosures on the last of this report