

Technical Corner

19 March 2021

IHSG

Range: 6.310 – 6.390

---Harga ditutup di atas EMA5,10 dan membentuk pola long white marubozu yang merupakan sinyal bullish continuation namun berada di area resistance pola triangle, stochastic netral dan MACD bullish crossover. **Target** pelemahan indeks pada level **6.310** kemudian 6.270 dengan *resist* di level 6.390 kemudian 6.430.

IHSG (6.348)



PT Adaro Energy, Tbk

Rekomendasi: Buy

---Harga ditutup di atas EMA5,10 dan membentuk pola white closing marubozu yang merupakan sinyal bullish continuation, stochastic netral dan MACD histogram divergence positif. **Target** kenaikan harga pada level **1.295** kemudian 1.320 dengan *support* di level 1.245, *cut loss* jika *break* 1.220.

ADRO (1.270)



Technical Corner

19 March 2021

PT BPD Jawa Timur, Tbk

Rekomendasi: Buy on Weakness

---Harga ditutup di atas EMA5,10 dan membentuk pola doji yang merupakan sinyal indecision, stochastic netral dan MACD histogram convergence negatif. **Target** harga beli pada level **840** dengan *resist* di level 870 kemudian 885.

BJTM (855)



PT Jasa Marga, Tbk

Rekomendasi: Buy

---Harga ditutup di atas EMA5,10 dan membentuk pola white closing marubozu yang merupakan sinyal bullish continuation, stochastic golden cross dan MACD histogram divergence positif. **Target** kenaikan harga pada level **4.530** kemudian 4.610 dengan *support* di level 4.370, *cut loss* jika *break* 4.290.

JSMR (4.450)



Technical Corner

19 March 2021

PT Salim Ivomas Pratama, Tbk

Rekomendasi: Buy on Weakness

---Harga ditutup membentuk pola doji yang merupakan sinyal indecision namun masih di atas EMA5,10, stochastic overbought dan MACD histogram convergence positif. **Target** harga beli pada level **500** dengan *resist* di level 520 kemudian 530.

SIMP (510)

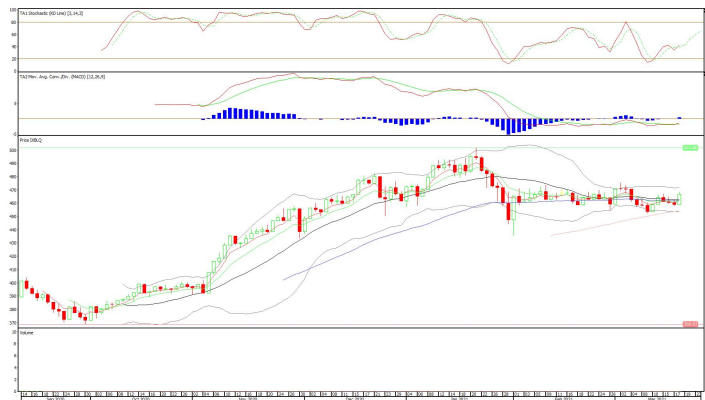


Batavia Smart Liquid ETF

Rekomendasi: Buy

---Harga ditutup di atas EMA5,10 dan membentuk pola white opening marubozu yang merupakan sinyal bullish continuation, stochastic golden cross dan MACD bullish crossover. **Target** kenaikan harga pada level **471** kemudian 475 dengan *support* di level 463, *cut loss* jika *break* 459.

XBLQ (467)



Technical Corner

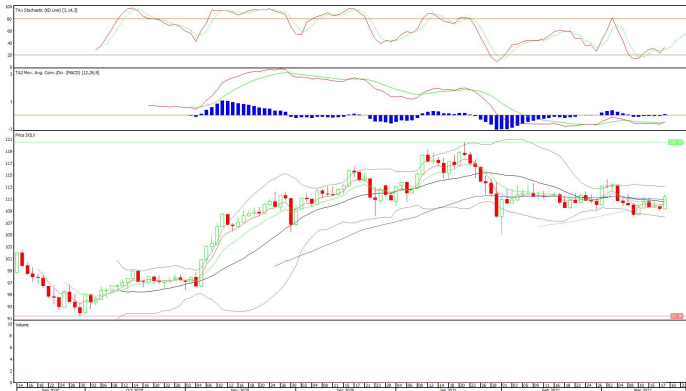
19 March 2021

Insight ETF FTSE LVF Index

Rekomendasi: Buy

---Harga ditutup di atas EMA5,10 dan membentuk pola white opening marubozu yang merupakan sinyal bullish continuation, stochastic golden cross dan MACD bullish crossover. **Target** kenaikan harga pada level **113** kemudian 115 dengan *support* di level 109, *cut loss* jika *break* 107.

XILV (111)

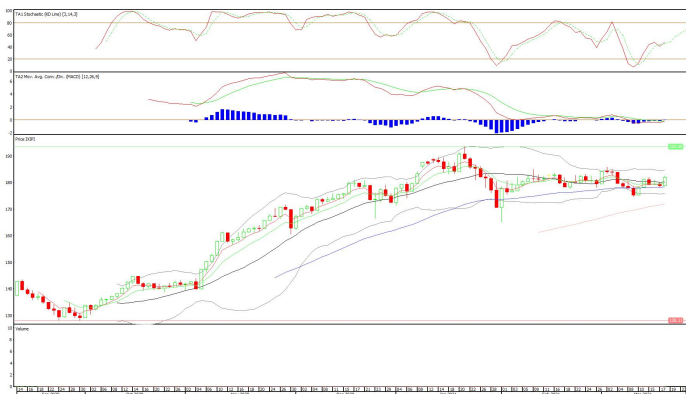


Premier ETF Pefindo i-Grade

Rekomendasi: Buy

---Harga ditutup di atas EMA5,10 dan membentuk pola white opening marubozu yang merupakan sinyal bullish continuation, stochastic golden cross dan MACD bullish crossover. **Target** kenaikan harga pada level **185** kemudian 188 dengan *support* di level 179, *cut loss* jika *break* 176.

XIPI (182)



Technical Corner

19 March 2021

PT INDO PREMIER SEKURITAS

Pacific Century Place 16th Floor SCBD Lot 10
Jl. Jend. Sudirman Kav. 52-53
Jakarta Selatan 12190 - Indonesia
p +62 21 5088 7200

ANALYSTS CERTIFICATION

The views expressed in this research report accurately reflect the analyst's personal views about any and all of the subject securities or issuers; and no part of the research analyst's compensation was, is, or will be, directly or indirectly, related to the specific recommendations or views expressed in the report.

DISCLAIMERS

This research is based on information obtained from sources believed to be reliable, but we do not make any representation or warranty nor accept any responsibility or liability as to its accuracy, completeness or correctness. Opinions expressed are subject to change without notice. This document is prepared for general circulation. Any recommendations contained in this document does not have regard to the specific investment objectives, financial situation and the particular needs of any specific addressee. This document is not and should not be construed as an offer or a solicitation of an offer to purchase or subscribe or sell any securities. PT. Indo Premier Sekuritas or its affiliates may seek or will seek investment banking or other business relationships with the companies in this report.

Refer to Important disclosures on the last of this report