

Technical Corner

17 March 2021

IHSG

Range: 6.250 – 6.370

---Harga ditutup di bawah EMA5 dan membentuk pola long black marubozu yang merupakan sinyal bearish continuation, stochastic netral dan MACD histogram convergence positif. **Target** penurunan indeks pada level **6.250** dan 6.190 dengan *resist* di level 6.370 kemudian 6.430.

IHSG (6.310)



PT Bank Rakyat Indonesia, Tbk

Rekomendasi: Buy

--- Harga ditutup di atas EMA5,10 dan membentuk pola long white marubozu yang merupakan sinyal bullish continuation, stochastic golden cross dan MACD histogram convergence negatif. **Target** kenaikan harga pada level **4.800** kemudian 4.880 dengan *support* di level 4.640, *cut loss* jika *break* 4.560.

BBRI (4.720)



Technical Corner

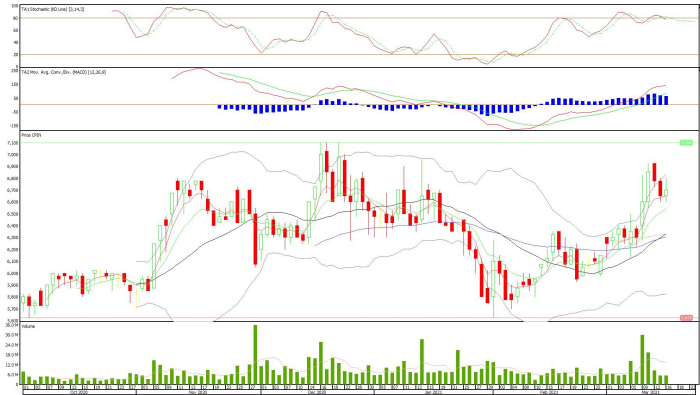
17 March 2021

PT Charoen Pokphand Indonesia, Tbk

Rekomendasi: Buy

---Harga ditutup di atas EMA5,10 dan membentuk pola hammer yang merupakan sinyal bullish reversal, stochastic death cross dan MACD histogram convergence positif. **Target** kenaikan harga pada level **6.800** kemudian 6.900 dengan *support* di level 6.600, *cut loss* jika *break* 6.500.

CPIN (6.700)



PT Pakuwon Jati, Tbk

Rekomendasi: Buy on Weakness

---Harga ditutup membentuk pola long black marubozu yang merupakan sinyal bearish continuation namun masih di atas EMA5,10, stochastic memasuki zona netral dan MACD histogram convergence positif. **Target** harga beli pada level **580** dengan *resist* di level 600. kemudian 615.

PWON (590)



Technical Corner

17 March 2021

PT Telkom Indonesia, Tbk

Rekomendasi: Buy on Weakness

---Harga ditutup tertahan MA 20 dan membentuk pola black closing marubozu yang merupakan sinyal bearish continuation, stochastic death cross dan MACD histogram divergence negatif. **Target** harga beli pada level **3.330** dengan *resist* di level 3.400, kemudian 3.480.

TLKM (3.360)

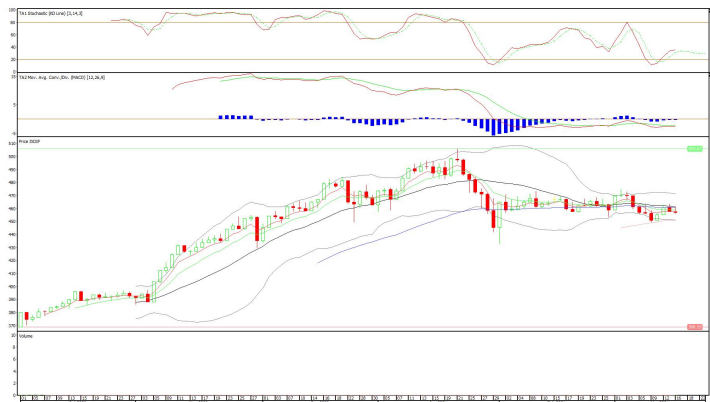


XDIF (457)

Danareksa ETF Indonesia Top 40

Rekomendasi: Buy on Weakness

---Harga ditutup di bawah EMA5,10 dan membentuk pola doji yang merupakan sinyal indecision, stochastic netral dan MACD histogram convergence negatif. **Target** harga beli pada level **452** dengan *resist* di level 460, kemudian 463.



Technical Corner

17 March 2021

Premier ETF Index IDX30

Rekomendasi: Buy on Weakness

---Harga ditutup di bawah EMA5,10 and membentuk pola doji yang merupakan sinyal indecision, stochastic netral dan MACD histogram convergence negatif.
Target harga beli pada level **497** dengan *resist* di level 506, kemudian 510.

XIID (501)

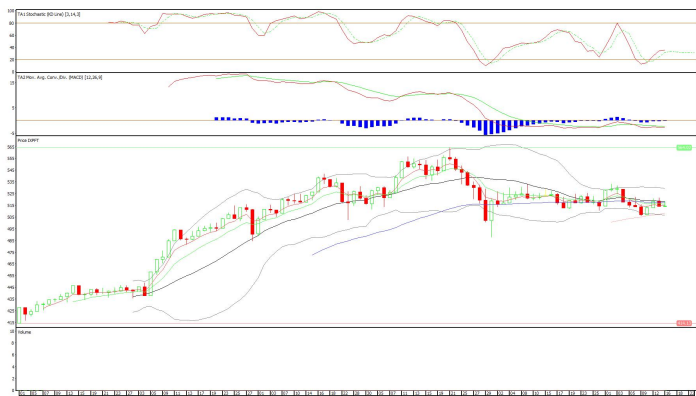


XPFT (514)

Pinnacle FTSE Indonesia ETF

Rekomendasi: Buy on Weakness

---Harga ditutup di bawah EMA10 dan membentuk pola doji yang merupakan sinyal indecision, stochastic netral dan MACD histogram convergence negatif.
Target harga beli pada level **509** dengan *resist* di level 517, kemudian 521.



Technical Corner

17 March 2021

PT INDO PREMIER SEKURITAS

Pacific Century Place 16th Floor SCBD Lot 10
Jl. Jend. Sudirman Kav. 52-53
Jakarta Selatan 12190 - Indonesia
p +62 21 5088 7200

ANALYSTS CERTIFICATION

The views expressed in this research report accurately reflect the analyst's personal views about any and all of the subject securities or issuers; and no part of the research analyst's compensation was, is, or will be, directly or indirectly, related to the specific recommendations or views expressed in the report.

DISCLAIMERS

This research is based on information obtained from sources believed to be reliable, but we do not make any representation or warranty nor accept any responsibility or liability as to its accuracy, completeness or correctness. Opinions expressed are subject to change without notice. This document is prepared for general circulation. Any recommendations contained in this document does not have regard to the specific investment objectives, financial situation and the particular needs of any specific addressee. This document is not and should not be construed as an offer or a solicitation of an offer to purchase or subscribe or sell any securities. PT. Indo Premier Sekuritas or its affiliates may seek or will seek investment banking or other business relationships with the companies in this report.

Refer to Important disclosures on the last of this report