

Technical Corner

16 March 2021

IHSG

Range: 6.275 – 6.375

---Harga ditutup di atas EMA5,10 dan membentuk pola black closing marubozu, stochastic netral dan MACD histogram convergence negatif. **Target** kenaikan indeks pada level **6.375** kemudian 6.425 dengan *support* di level 6.275 kemudian 6.225.

IHSG (6.324)



PT AKR Corporindo, Tbk

Rekomendasi: Buy on Weakness

---Harga ditutup di atas EMA5,10 dan membentuk small bearish candle, stochastic netral dan MACD histogram convergence positif. **Target** harga beli pada level **3.570** dengan *resist* di level 3.670, kemudian 3.740.

AKRA (3.590)



Technical Corner

16 March 2021

PT Bank Negara Indonesia, Tbk

Rekomendasi: Buy

---Harga ditutup di atas EMA5,10 dan membentuk pola long white marubozu yang merupakan sinyal bullish continuation, stochastic netral dan MACD histogram divergence positif. **Target** kenaikan harga pada level **6.450** kemudian 6.575 dengan *support* di level 6.200, *cut loss* jika *break* 6.075.

BBNI (6.325)



PT BPD Jawa Barat dan Banten, Tbk

Rekomendasi: Buy

---Harga ditutup di atas EMA5,10 dan membentuk pola long white marubozu yang merupakan sinyal bullish continuation, stochastic netral dan MACD histogram convergence negatif. **Target** kenaikan harga pada level **1.600** kemudian 1.630 dengan *support* di level 1.540, *cut loss* jika *break* 1.510.

BJBR (1.570)



Technical Corner

16 March 2021

PT Mitra Adiperkasa, Tbk

Rekomendasi: Buy on Weakness

---Harga ditutup di atas MA20 dan membentuk pola doji yang merupakan sinal indecision, stochastic netral dan MACD histogram convergence positif. **Target** harga beli pada level **805** dengan *resist* di level 830, kemudian 850.

MAPI (815)

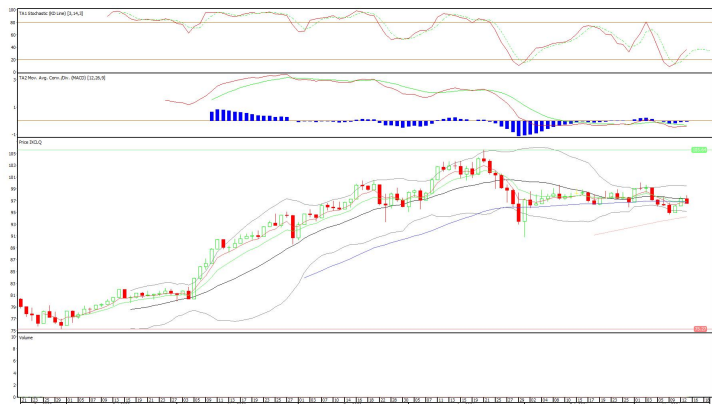


Cipta ETF Index LQ45

Rekomendasi: Buy on Weakness

---Harga ditutup di bawah EMA5,10 dan membentuk pola black closing marubozu yang merupakan sinyal bearish continuation, stochastic netral dan MACD histogram divergence negatif. **Target** harga beli pada level **96** dengan *resist* di level 98, kemudian 99.

XCLQ (97)



Technical Corner

16 March 2021

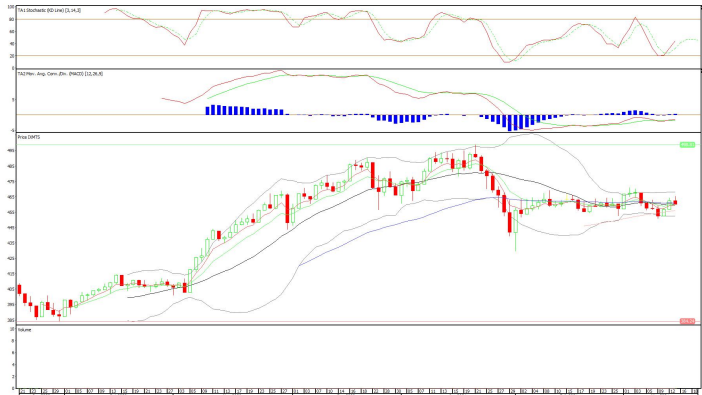
ETF MNC36 Likuid

Rekomendasi: Buy on Weakness

---Harga ditutup membentuk pola black closing marubozu yang merupakan sinyal bearish continuation, stochastic netral dan MACD histogram divergence positif.

Target harga beli pada level **457** dengan *resist* di level 464, kemudian 466.

XMTS (462)



XPDV (439)

Pinnacle Core High Dividend ETF

Rekomendasi: Buy on Weakness

---Harga ditutup di bawah EMA5,10 dan membentuk pola black closing marubozu yang merupakan sinyal bearish continuation, stochastic netral dan MACD histogram convergence positif.

Target harga beli pada level **437** dengan *resist* di level 441, kemudian 443.



Technical Corner

16 March 2021

PT INDO PREMIER SEKURITAS

Pacific Century Place 16th Floor SCBD Lot 10
Jl. Jend. Sudirman Kav. 52-53
Jakarta Selatan 12190 - Indonesia
p +62 21 5088 7200

ANALYSTS CERTIFICATION

The views expressed in this research report accurately reflect the analyst's personal views about any and all of the subject securities or issuers; and no part of the research analyst's compensation was, is, or will be, directly or indirectly, related to the specific recommendations or views expressed in the report.

DISCLAIMERS

This research is based on information obtained from sources believed to be reliable, but we do not make any representation or warranty nor accept any responsibility or liability as to its accuracy, completeness or correctness. Opinions expressed are subject to change without notice. This document is prepared for general circulation. Any recommendations contained in this document does not have regard to the specific investment objectives, financial situation and the particular needs of any specific addressee. This document is not and should not be construed as an offer or a solicitation of an offer to purchase or subscribe or sell any securities. PT. Indo Premier Sekuritas or its affiliates may seek or will seek investment banking or other business relationships with the companies in this report.

Refer to Important disclosures on the last of this report