

Technical Corner

15 March 2021

IHSG

Range: 6.300 – 6.420

---Harga ditutup di atas EMA5,10 dan membentuk pola long white marubozu yang merupakan sinyal bullish continuation, stochastic netral dan MACD bullish crossover. **Target** kenaikan indeks pada level **6.420** kemudian 6.480 dengan *support* di level 6.300 kemudian 6.240.

IHSG (6.358)



PT Astra Agro Lestari, Tbk

Rekomendasi: Buy

---Harga ditutup di atas EMA5,10 dan membentuk pola white opening marubozu yang merupakan sinyal bullish continuation, stochastic netral dan MACD histogram divergence positif. **Target** kenaikan harga pada level **11.550** kemudian 11.800 dengan *support* di level 11.050, *cut loss* jika break 10.800.

AAJI (11.300)



Technical Corner

15 March 2021

PT Alam Sutera Realty, Tbk

Rekomendasi: Buy

---Harga ditutup di atas EMA5,10 dan membentuk pola white opening marubozu yang merupakan sinyal bullish continuation, stochastic golden cross dan MACD bullish crossover. **Target** kenaikan harga pada level **258** kemudian 266 dengan *support* di level 242, *cut loss* jika *break* 234.

ASRI (250)



PT Bank Mandiri, Tbk

Rekomendasi: Buy

---Harga ditutup di atas EMA5,10 dan membentuk pola white opening marubozu yang merupakan sinyal bullish continuation, stochastic golden cross dan MACD histogram divergence positif. **Target** kenaikan harga pada level **6.900** kemudian 7.075 dengan *support* di level 6.550, *cut loss* jika *break* 6.375.

BMRI (6.725)



Technical Corner

15 March 2021

PT Jasa Marga, Tbk

Rekomendasi: Buy

---Harga ditutup di atas EMA5,10 dan membentuk pola white opening marubozu yang merupakan sinyal bullish continuation, stochastic memasuki zona overbought dan MACD histogram divergence positif. **Target** kenaikan harga pada level **4.540** kemudian 4.610 dengan *support* di level 4.400, *cut loss* jika *break* 4.330.

JSMR (4.470)

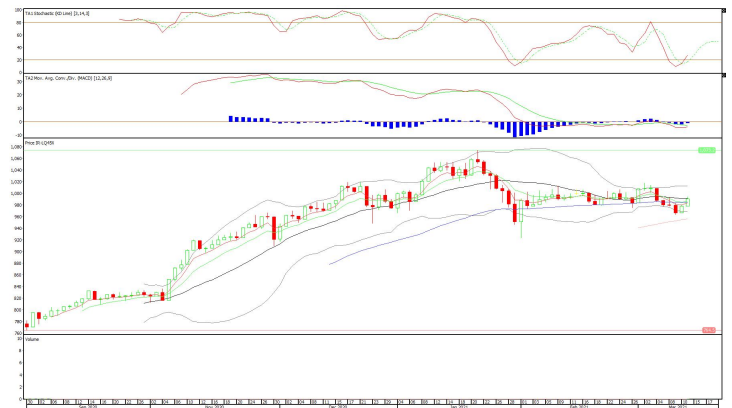


R-LQ45X (990)

Premier ETF LQ-45

Rekomendasi: Buy

---Harga ditutup di atas EMA5,10 dan membentuk pola white opening marubozu yang merupakan sinyal bullish continuation, stochastic memasuki zona netral dan MACD histogram convergence negatif. **Target** kenaikan harga pada level **1.002** kemudian 1.014 dengan *support* di level 978, *cut loss* jika *break* 966.



Technical Corner

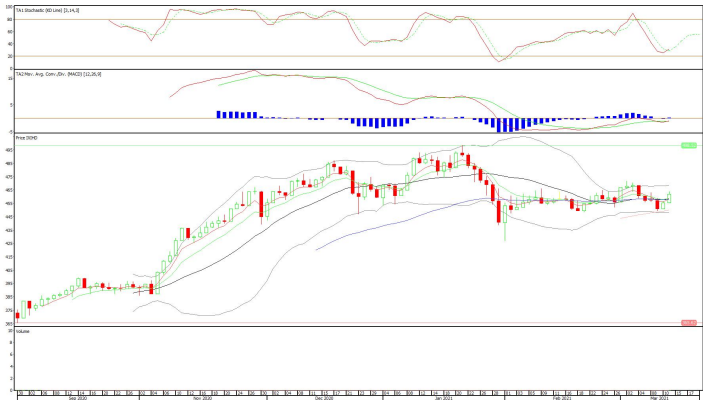
15 March 2021

Premier ETF IDX High Dividend 20

Rekomendasi: Buy

---Harga ditutup di atas EMA5,10 dan membentuk pola white opening marubozu yang merupakan sinyal bullish continuation, stochastic golden cross dan MACD bullish crossover. **Target** kenaikan harga pada level **469** kemudian 476 dengan *support* di level 455, *cut loss* jika *break* 448.

XIHD (462)

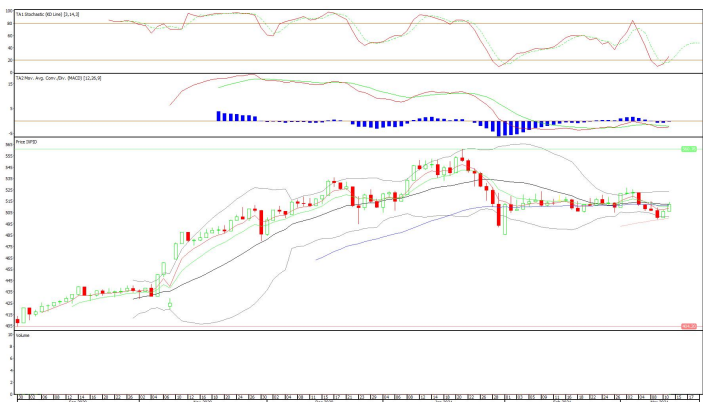


XPID (512)

Pinnacle IDX30 ETF

Rekomendasi: Buy

---Harga ditutup di atas EMA5,10 dan membentuk pola white opening marubozu yang merupakan sinyal bullish continuation, stochastic memasuki zona netral dan MACD histogram convergence negatif. **Target** kenaikan harga pada level **518** kemudian 524 dengan *support* di level 506, *cut loss* jika *break* 500.



Technical Corner

15 March 2021

PT INDO PREMIER SEKURITAS

Pacific Century Place 16th Floor SCBD Lot 10
Jl. Jend. Sudirman Kav. 52-53
Jakarta Selatan 12190 - Indonesia
p +62 21 5088 7200

ANALYSTS CERTIFICATION

The views expressed in this research report accurately reflect the analyst's personal views about any and all of the subject securities or issuers; and no part of the research analyst's compensation was, is, or will be, directly or indirectly, related to the specific recommendations or views expressed in the report.

DISCLAIMERS

This research is based on information obtained from sources believed to be reliable, but we do not make any representation or warranty nor accept any responsibility or liability as to its accuracy, completeness or correctness. Opinions expressed are subject to change without notice. This document is prepared for general circulation. Any recommendations contained in this document does not have regard to the specific investment objectives, financial situation and the particular needs of any specific addressee. This document is not and should not be construed as an offer or a solicitation of an offer to purchase or subscribe or sell any securities. PT. Indo Premier Sekuritas or its affiliates may seek or will seek investment banking or other business relationships with the companies in this report.

Refer to Important disclosures on the last of this report