

Technical Corner

10 March 2021

IHSG

Range: 6.140 – 6.260

---Harga ditutup di bawah EMA5,10 dan membentuk pola long black marubozu yang merupakan sinyal bearish continuation, stochastic netral dan MACD histogram divergence negatif. **Target** penurunan indeks pada level **6.140** dan 6.080 dengan *resist* di level 6.260 kemudian 6.320.

IHSG (6.200)



PT Charoen Pokphand Thailand, Tbk

Rekomendasi: Buy

---Harga ditutup di atas EMA5,10 dan membentuk pola long white marubozu yang merupakan sinyal bullish continuation, stochastic netral dan MACD histogram divergence positif. **Target** kenaikan harga pada level **6.800** kemudian 7.000 dengan *support* di level 6.400, *cut loss* jika *break* 6.200.

CPIN (6.600)



Technical Corner

10 March 2021

PT Krakatau Steel , Tbk

Rekomendasi: Buy

---Harga ditutup di atas EMA5 dan membentuk pola long white marubozu yang merupakan sinyal bullish continuation, stochastic netral dan MACD histogram convergence negatif. **Target** kenaikan harga pada level **685** kemudian 700 dengan *support* di level 655, *cut loss* jika *break* 640.

KRAS (670)



PT Indosat ,Tbk

Rekomendasi: Buy on Weakness

---Harga ditutup di bawah EMA5,10 dan membentuk pola black closing marubozu yang merupakan sinyal bearish continuation, stochastic death cross dan MACD histogram divergence negatif. **Target** harga beli pada level **5.550** dengan *resist* di level 5.750 kemudian 5.950.

ISAT (5.600)



Technical Corner

10 March 2021

PT Summarecon Agung, Tbk

Rekomendasi: Buy

---Harga ditutup di atas EMA,510 dan membentuk pola long white marubozu yang merupakan sinyal bullish continuation, stochastic netral dan MACD bearish crossover. **Target** kenaikan harga pada level **900** kemudian 915 dengan *support* di level 870, *cut loss* jika *break* 855.

SMRA (885)

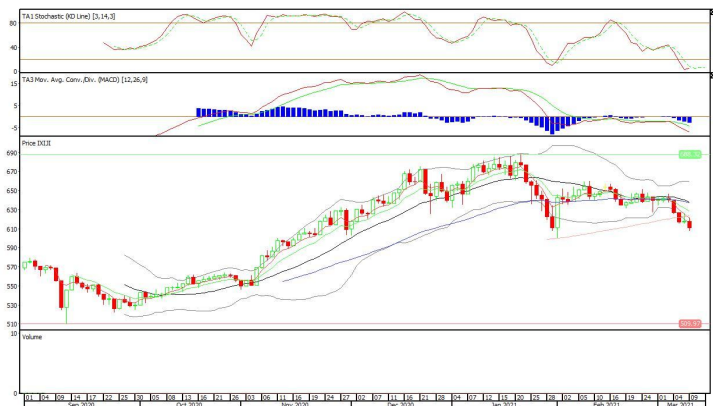


XIJI (611)

Syariah Premier ETF JII

Rekomendasi: Buy on Weakness

---Harga ditutup dibawah EMA5,10 dan membentuk pola long black marubozu yang merupakan sinyal bearish continuation, stochastic oversold dan MACD histogram divergence negatif. **Target** harga beli pada level **607** dengan *resist* di level 617 kemudian 624.



Technical Corner

10 March 2021

ETF MNC36 Likuid

Rekomendasi: Buy on Weakness

---Harga ditutup di bawah EMA5,10 dan membentuk pola long black marubozu yang merupakan sinyal bearish continuation, stochastic netral dan MACD bearish crossover. **Target** harga beli pada level **448** dengan *resist* di level 457 kemudian 460.

XMTS (453)

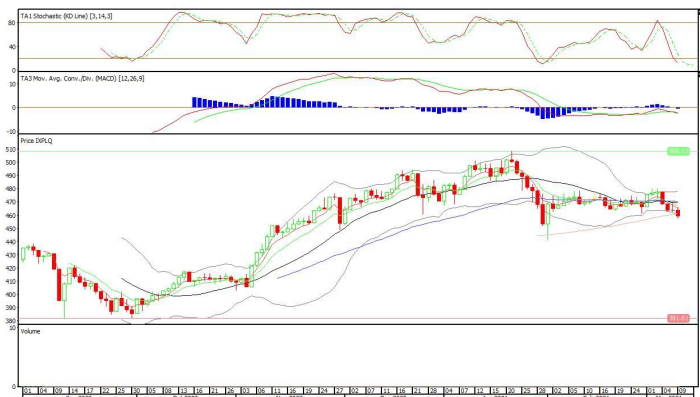


XPLQ (459)

Pinnacle Enhanced Liquid ETF

Rekomendasi: Buy on Weakness

---Harga ditutup di bawah EMA5,10 dan membentuk pola long black marubozu yang merupakan sinyal bearish continuation, stochastic oversold dan MACD histogram divergence negatif. **Target** harga beli pada level **453** dengan *resist* di level 463 kemudian 468.



Technical Corner

10 March 2021

PT INDO PREMIER SEKURITAS

Pacific Century Place 16th Floor SCBD Lot 10
Jl. Jend. Sudirman Kav. 52-53
Jakarta Selatan 12190 - Indonesia
p +62 21 5088 7200

ANALYSTS CERTIFICATION

The views expressed in this research report accurately reflect the analyst's personal views about any and all of the subject securities or issuers; and no part of the research analyst's compensation was, is, or will be, directly or indirectly, related to the specific recommendations or views expressed in the report.

DISCLAIMERS

This research is based on information obtained from sources believed to be reliable, but we do not make any representation or warranty nor accept any responsibility or liability as to its accuracy, completeness or correctness. Opinions expressed are subject to change without notice. This document is prepared for general circulation. Any recommendations contained in this document does not have regard to the specific investment objectives, financial situation and the particular needs of any specific addressee. This document is not and should not be construed as an offer or a solicitation of an offer to purchase or subscribe or sell any securities. PT. Indo Premier Sekuritas or its affiliates may seek or will seek investment banking or other business relationships with the companies in this report.

Refer to Important disclosures on the last of this report