

Technical Corner

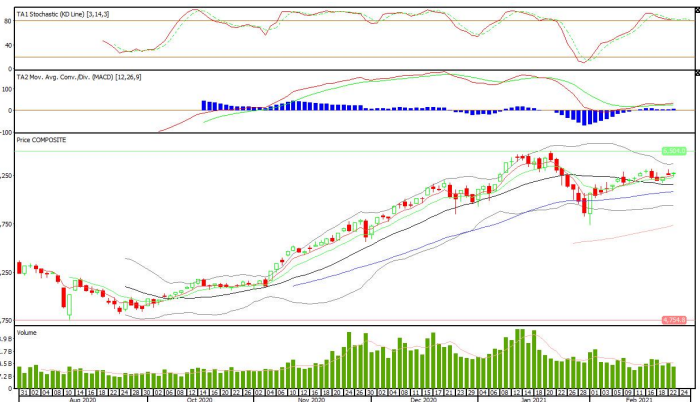
24 February 2021

IHSG

Range: 6.230 – 6.315

---Indeks ditutup di atas EMA5,10 dan membentuk pola doji yang merupakan sinyal indecision, stochastic konsisten overbought dan MACD histogram divergence positif. **Target** kenaikan indeks pada level **6.315** dan 6.355 dengan *support* di level 6.230 kemudian 6.190.

IHSG (6.273)



PT Bank Central Asia, Tbk

Rekomendasi: Buy

---Harga ditutup di atas EMA5 dan membentuk pola doji yang merupakan sinyal indecision, stochastic netral dan MACD histogram convergence negatif. **Target** kenaikan harga pada level **34.700** kemudian 35.275 dengan *support* di level 33.550, *cut loss* jika *break* 32.975.

BBCA (34.125)



Technical Corner

24 February 2021

PT Bank Rakyat Indonesia, Tbk

Rekomendasi: Buy on Weakness

---Harga ditutup di atas EMA5,10 dan membentuk pola small bearish candle, stochastic konsisten di area overbought dan MACD histogram divergence positif.

Target harga beli pada level **4.740** dengan *resist* di level 4.870, kemudian 4.950.

BBRI (4.790)



PT Elnusa, Tbk

Rekomendasi: Buy

---Harga ditutup di atas EMA5,10 dan membentuk pola white closing marubozu yang merupakan sinyal bullish continuation, stochastic golden cross dan MACD histogram divergence positif.

Target kenaikan harga pada level **438** kemudian 452 dengan *support* di level 410, *cut loss* jika break 396.

ELSA (424)



Technical Corner

24 February 2021

PT Waskita Karya, Tbk

Rekomendasi: Buy on Weakness

---Harga ditutup di tutup membentuk pola long white marubozu yang merupakan sinyal bearish continuation namun masih di atas EMA50, stochastic netral dan MACD histogram divergence negatif. **Target** penurunan harga beli pada level **1.450** dengan *resist* di level 1.515, kemudian 1.550.

WSKT (1.480)

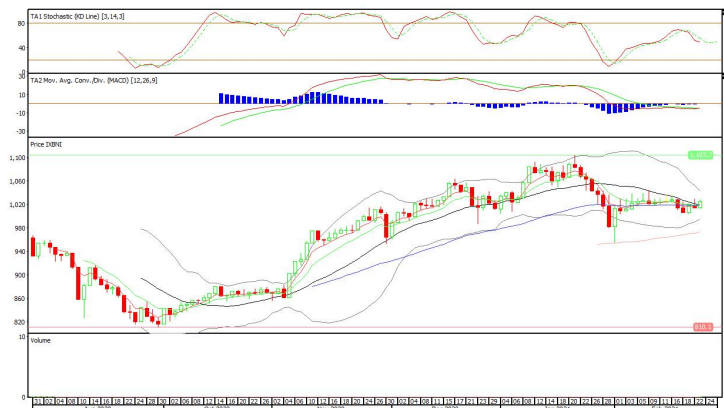


BNI-AM Nusantara MSCI Indo ETF

Rekomendasi: Buy

---Harga ditutup di atas EMA5,10 dan membentuk pola white opening marubozu yang merupakan sinyal bullish continuation, stochastic netral dan MACD bullish crossover. **Target** kenaikan harga pada level **1.036** kemudian 1.047 dengan *support* di level 1.014, *cut loss* jika *break* 1.003.

XBNI (1.025)



Technical Corner

24 February 2021

Premier ETF IDX High Dividend 20

Rekomendasi: Buy

---Harga ditutup di atas EMA5,10 dan membentuk pola long white marubozu yang merupakan sinyal bullish continuation, stochastic golden cross dan MACD bullish crossover. **Target** kenaikan harga pada level **467** kemudian 473 dengan *support* di level 455, *cut loss* jika *break* 449.

XIHD (461)

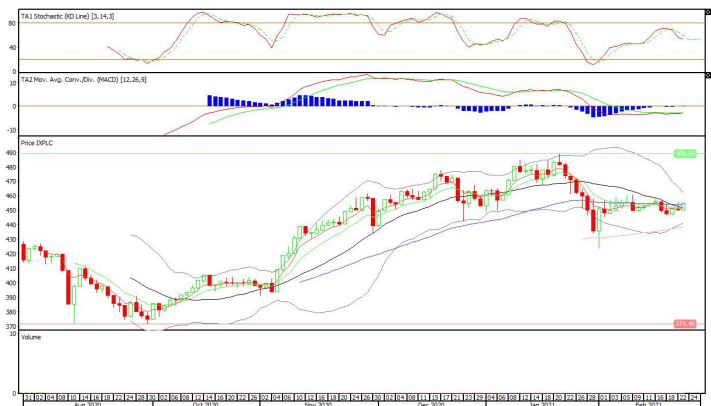


XPLC (454)

Pinnacle Indonesia Large Cap ETF

Rekomendasi: Buy

---Harga ditutup di atas EMA5,10 dan membentuk pola white opening marubozu yang merupakan sinyal bullish continuation, stochastic netral dan MACD bullish crossover. **Target** kenaikan harga pada level **458** kemudian 462 dengan *support* di level 450, *cut loss* jika *break* 446.



Technical Corner

24 February 2021

PT INDO PREMIER SEKURITAS

Pacific Century Place 16th Floor SCBD Lot 10
Jl. Jend. Sudirman Kav. 52-53
Jakarta Selatan 12190 - Indonesia
p +62 21 5088 7200

ANALYSTS CERTIFICATION

The views expressed in this research report accurately reflect the analyst's personal views about any and all of the subject securities or issuers; and no part of the research analyst's compensation was, is, or will be, directly or indirectly, related to the specific recommendations or views expressed in the report.

DISCLAIMERS

This research is based on information obtained from sources believed to be reliable, but we do not make any representation or warranty nor accept any responsibility or liability as to its accuracy, completeness or correctness. Opinions expressed are subject to change without notice. This document is prepared for general circulation. Any recommendations contained in this document does not have regard to the specific investment objectives, financial situation and the particular needs of any specific addressee. This document is not and should not be construed as an offer or a solicitation of an offer to purchase or subscribe or sell any securities. PT. Indo Premier Sekuritas or its affiliates may seek or will seek investment banking or other business relationships with the companies in this report.

Refer to Important disclosures on the last of this report