

# Technical Corner

19 February 2021

## IHSG

Range: 6.150 – 6.250

---Indeks ditutup di bawah EMA5,10 dan membentuk pola black closing marubozu yang merupakan sinyal bearish continuation, stochastic death cross dan MACD histogram convergence positif.

**Target** penurunan indeks pada level 6.150 dan 6.100 dengan *resist* di level 6.250 kemudian 6.300.

## IHSG (6.200)



## PT Alam Sutera Realty, Tbk

Rekomendasi: Buy

---Harga ditutup di atas EMA5,10 dan membentuk pola long white marubozu yang merupakan sinyal bullish continuation, stochastic overbought dan MACD histogram divergence positif.

**Target** kenaikan harga pada level 250 kemudian 256 dengan *support* di level 238, *cut loss* jika break 232.

## ASRI (244)



# Technical Corner

19 February 2021

## PT Surya Semesta Internusa, Tbk

### Rekomendasi: Buy

---Harga ditutup di atas EMA5,10 dan membentuk pola small bullish candle, stochastic death cross dan MACD histogram convergence positif. **Target** kenaikan harga pada level **565** kemudian 580 dengan *support* di level 535, *cut loss* jika *break* 520.

## SSIA (550)



## PT Waskita Beton Precast, Tbk

### Rekomendasi: Buy on Weakness

---Harga ditutup membentuk pola doji yang merupakan sinyal indecision namun masih tertahan di atas EMA50, stochastic death cross dan MACD histogram convergence positif. **Target** harga beli pada level **262** dengan *resist* di level 272 kemudian 278.

## WSBP (266)



# Technical Corner

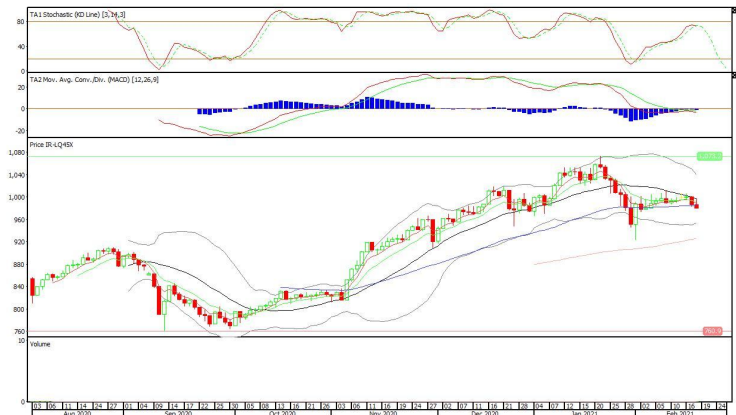
19 February 2021

## Premier ETF LQ-45

### Rekomendasi: Sell

---Harga ditutup di bawah EMA50 dan membentuk pola black closing marubozu yang merupakan sinyal bearish continuation, stochastic death cross dan MACD histogram divergence negatif. **Target** penurunan harga pada level **974** dan 968 dengan *resist* di level 986 dan 992.

## R-LQ45X (980)

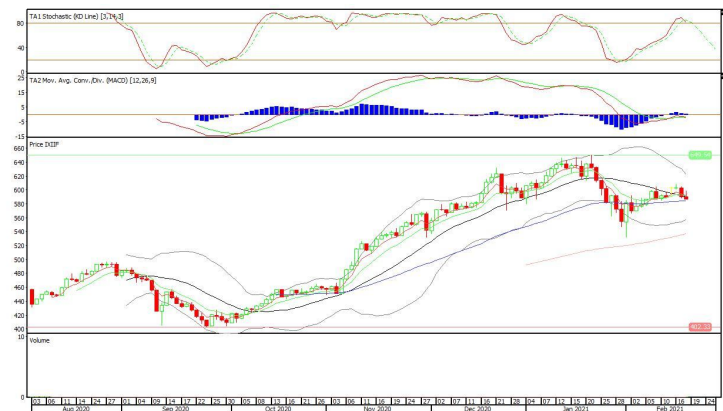


## XIIF (587)

## Premier ETF Indonesia Financial

### Rekomendasi: Sell

---Harga ditutup di bawah EMA5,10 dan membentuk pola black closing marubozu yang merupakan sinyal bearish continuation, stochastic death cross dan MACD histogram convergence positif. **Target** penurunan harga pada level **579** dan 571 dengan *resist* di level 595 dan 603.



# Technical Corner

19 February 2021

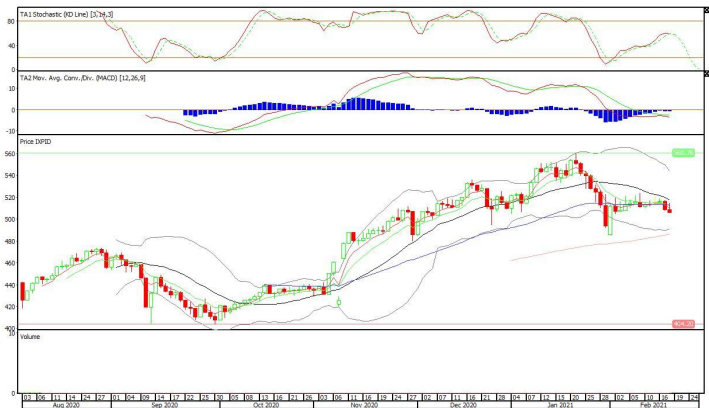
## XPID (506)

### Pinnacle IDX30 ETF

#### Rekomendasi: Sell

---Harga ditutup di bawah EMA5,10 dan membentuk pola black closing marubozu yang merupakan sinyal bearish continuation, stochastic death cross dan MACD histogram divergence negatif.

**Target** penurunan harga pada level **500** dan 494 dengan *resist* di level 512 dan 518.



**PT INDO PREMIER SEKURITAS**  
 Pacific Century Place 16th Floor SCBD Lot 10  
 Jl. Jend. Sudirman Kav. 52-53  
 Jakarta Selatan 12190 - Indonesia  
 p +62 21 5088 7200

#### ANALYSTS CERTIFICATION

The views expressed in this research report accurately reflect the analyst's personal views about any and all of the subject securities or issuers; and no part of the research analyst's compensation was, is, or will be, directly or indirectly, related to the specific recommendations or views expressed in the report.

#### DISCLAIMERS

This research is based on information obtained from sources believed to be reliable, but we do not make any representation or warranty nor accept any responsibility or liability as to its accuracy, completeness or correctness. Opinions expressed are subject to change without notice. This document is prepared for general circulation. Any recommendations contained in this document does not have regard to the specific investment objectives, financial situation and the particular needs of any specific addressee. This document is not and should not be construed as an offer or a solicitation of an offer to purchase or subscribe or sell any securities. PT. Indo Premier Sekuritas or its affiliates may seek or will seek investment banking or other business relationships with the companies in this report.

**Refer to Important disclosures on the last of this report**