

# Technical Corner

16 February 2021

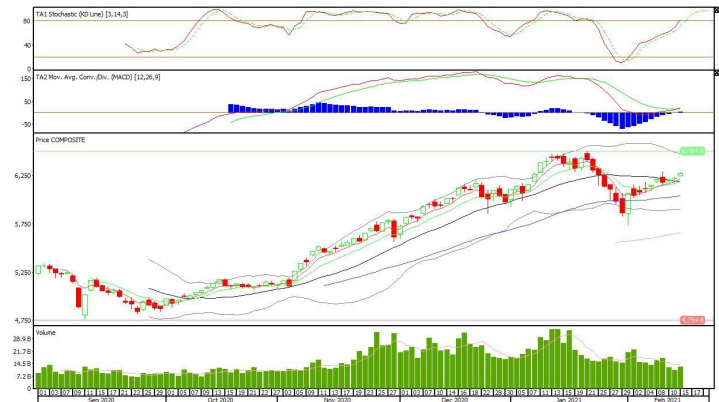
## IHSG

Range: 6.220 – 6.320

---Indeks ditutup di atas EMA5,10 dan ditutup membentuk pola small bullish candle, stochastic memasuki zona overbought dan MACD bullish crossover.

**Target** kenaikan indeks pada level **6.320** kemudian 6.370 dengan *support* di level 6.220 dan 6.170.

## IHSG (6.270)



## PT Bumi Serpong Damai, Tbk

Rekomendasi: Buy

---Harga ditutup di atas EMA5,10 dan membentuk pola long white marubozu yang merupakan sinyal bullish continuation, stochastic memasuki zona overbought dan MACD histogram divergence positif. **Target** kenaikan harga pada level **1.300** kemudian 1.340 dengan *support* di level 1.220, *cut loss* jika *break* 1.180.

## BSDE (1.260)



# Technical Corner

16 February 2021

## PT Indah Kiat Pulp & Paper, Tbk

### Rekomendasi: Buy

---Harga ditutup di atas EMA5,10 dan membentuk pola long white marubozu yang merupakan sinyal bullish continuation, stochastic golden cross dan MACD bullish crossover. **Target** kenaikan harga pada level **15.300** kemudian 15.800 dengan *support* di level 14.300, *cut loss* jika *break* 13.800.

## INKP (14.800)

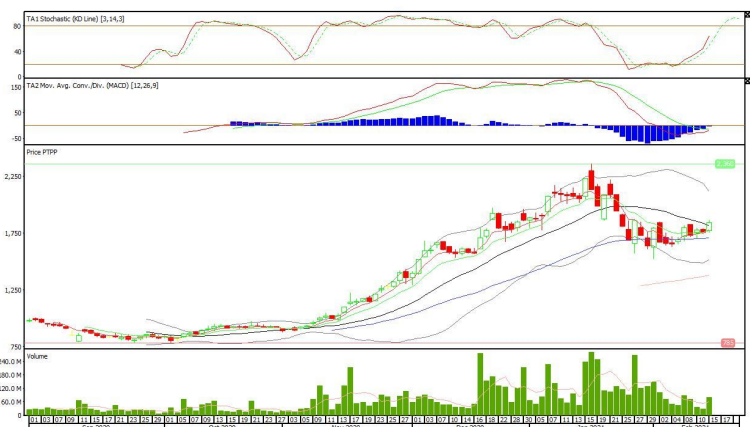


## PT Pembangunan Perumahan, Tbk

### Rekomendasi: Buy

---Harga ditutup di atas EMA5,10 dan membentuk pola long white marubozu yang merupakan sinyal bullish continuation, stochastic netral dan MACD histogram convergence negatif. **Target** kenaikan harga pada level **1.910** kemudian 1.980 dengan *support* di level 1.770, *cut loss* jika *break* 1.700.

## PTPP (1.840)



# Technical Corner

16 February 2021

## Premier ETF Index IDX30

**Rekomendasi: Buy**

---Harga ditutup di atas EMA5,10 dan membentuk pola white opening marubozu yang merupakan sinyal bullish continuation, stochastic netral dan MACD histogram convergence negatif. **Target** kenaikan harga pada level **513** kemudian 516 dengan *support* di level 507, *cut loss* jika *break* 504.

## XIID (510)

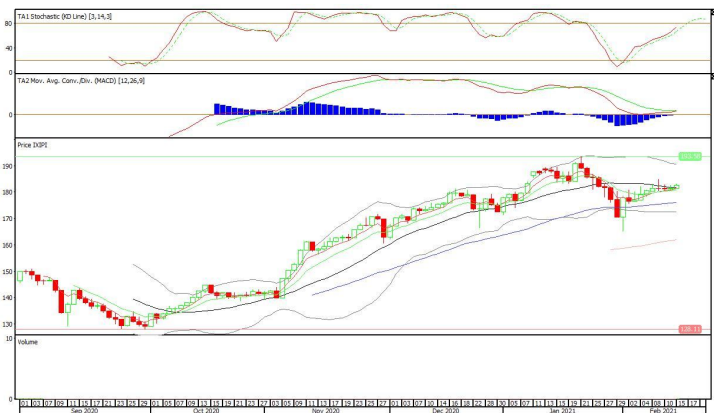


## XIPI (183)

## Premier ETF Pefindo i-Grade

**Rekomendasi: Buy**

---Harga ditutup di atas EMA5,10 dan membentuk pola white opening marubozu yang merupakan sinyal bullish continuation, stochastic netral dan MACD histogram convergence negatif. **Target** kenaikan harga pada level **185** kemudian 187 dengan *support* di level 181, *cut loss* jika *break* 179.



# Technical Corner

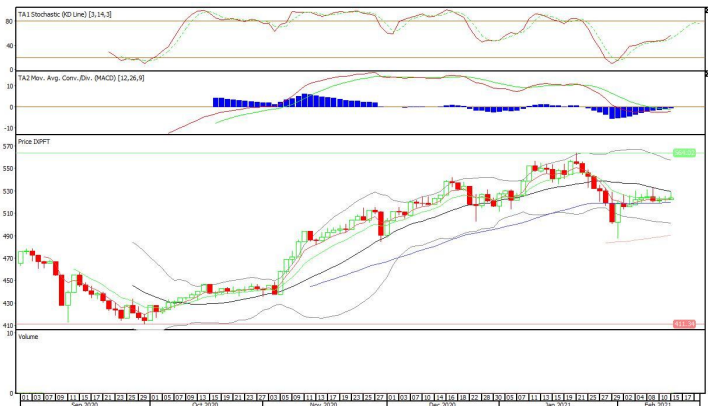
16 February 2021

## XPFT (524)

### Pinnacle FTSE Indonesia ETF

#### Rekomendasi: Buy

---Harga ditutup di atas EMA5,10 dan membentuk pola small bullish candle, stochastic netral dan MACD histogram convergence negatif. **Target** kenaikan harga pada level **529** kemudian 534 dengan *support* di level 519, *cut loss* jika *break* 514.



**PT INDO PREMIER SEKURITAS**  
 Pacific Century Place 16th Floor SCBD Lot 10  
 Jl. Jend. Sudirman Kav. 52-53  
 Jakarta Selatan 12190 - Indonesia  
 p +62 21 5088 7200

#### ANALYSTS CERTIFICATION

The views expressed in this research report accurately reflect the analyst's personal views about any and all of the subject securities or issuers; and no part of the research analyst's compensation was, is, or will be, directly or indirectly, related to the specific recommendations or views expressed in the report.

#### DISCLAIMERS

This research is based on information obtained from sources believed to be reliable, but we do not make any representation or warranty nor accept any responsibility or liability as to its accuracy, completeness or correctness. Opinions expressed are subject to change without notice. This document is prepared for general circulation. Any recommendations contained in this document does not have regard to the specific investment objectives, financial situation and the particular needs of any specific addressee. This document is not and should not be construed as an offer or a solicitation of an offer to purchase or subscribe or sell any securities. PT. Indo Premier Sekuritas or its affiliates may seek or will seek investment banking or other business relationships with the companies in this report.

**Refer to Important disclosures on the last of this report**