

# Technical Corner

11 February 2021

## IHSG

Range: 6.150 – 6.250

---Indeks ditutup membentuk pola doji yang merupakan sinyal indecision namun masih di atas EMA5,10, stochastic netral dan MACD histogram convergence negatif. **Target** kenaikan indeks pada level 6.250 kemudian 6.300 dengan *support* di level 6.150 dan 6.100.

## IHSG (6.202)



## PT Bank Negara Indonesia, Tbk

Rekomendasi: Buy on Weakness

---Harga ditutup membentuk pola doji yang merupakan sinyal indecision namun tertahan di atas MA20, stochastic netral dan MACD histogram convergence positif. **Target** harga beli pada level 6.125 dengan *resist* di level 6.300 kemudian 6.400.

## BBNI (6.200)



# Technical Corner

11 February 2021

## PT Bank Mandiri, Tbk

**Rekomendasi: Buy on Weakness**

---Harga ditutup membentuk pola black opening marubozu yang merupakan sinyal bearish continuation, stochastic netral dan MACD histogram convergence negatif.

**Target** harga beli pada level **6.400** dengan *resist* di level 6.600 kemudian 6.700.

## BMRI (6.500)



## PT Indosat, Tbk

**Rekomendasi: Buy**

---Harga ditutup di atas MA20 dan membentuk pola long white marubozu yang merupakan sinyal bullish continuation, stochastic netral dan MACD histogram convergence negatif. **Target** kenaikan harga pada level **6.025** kemudian 6.250 dengan *support* di level 5.575, *cut loss* jika *break* 5.350.

## ISAT (5.800)



# Technical Corner

11 February 2021

## BNI-AM Nusantara MSCI Indo ETF

**Rekomendasi: Buy**

---Harga ditutup di atas EMA5,10 dan membentuk pola doji yang merupakan sinyal indecision, stochastic netral dan MACD histogram convergence negatif. **Target** kenaikan harga pada level **1.030** kemudian 1.037 dengan *support* di level 1.016, *cut loss* jika *break* 1.009.

## XBNI (1.023)

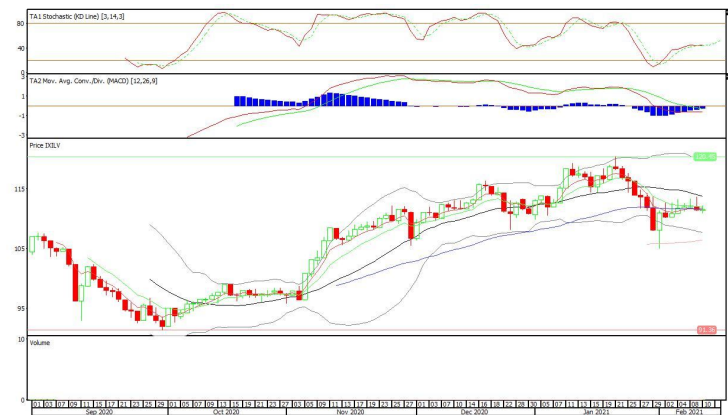


## XILV (112)

## Insight ETF FTSE LVF Index

**Rekomendasi: Buy**

---Harga ditutup di atas EMA5 dan membentuk pola doji yang merupakan sinyal indecision, stochastic netral dan MACD histogram convergence negatif. **Target** kenaikan harga pada level **113** kemudian 114 dengan *support* di level 111, *cut loss* jika *break* 110.



# Technical Corner

11 February 2021

## XMTS (460)

### ETF MNC36 Likuid

#### Rekomendasi: Buy

---Harga ditutup di atas EMA5 dan membentuk pola small bullish candle, stochastic netral dan MACD histogram convergence negatif. **Target** kenaikan harga pada level **464** kemudian 468 dengan *support* di level 456, *cut loss* jika *break* 452.



**PT INDO PREMIER SEKURITAS**  
Pacific Century Place 16th Floor SCBD Lot 10  
Jl. Jend. Sudirman Kav. 52-53  
Jakarta Selatan 12190 - Indonesia  
p +62 21 5088 7200

#### ANALYSTS CERTIFICATION

The views expressed in this research report accurately reflect the analyst's personal views about any and all of the subject securities or issuers; and no part of the research analyst's compensation was, is, or will be, directly or indirectly, related to the specific recommendations or views expressed in the report.

#### DISCLAIMERS

This research is based on information obtained from sources believed to be reliable, but we do not make any representation or warranty nor accept any responsibility or liability as to its accuracy, completeness or correctness. Opinions expressed are subject to change without notice. This document is prepared for general circulation. Any recommendations contained in this document does not have regard to the specific investment objectives, financial situation and the particular needs of any specific addressee. This document is not and should not be construed as an offer or a solicitation of an offer to purchase or subscribe or sell any securities. PT. Indo Premier Sekuritas or its affiliates may seek or will seek investment banking or other business relationships with the companies in this report.

**Refer to Important disclosures on the last of this report**