

Technical Corner

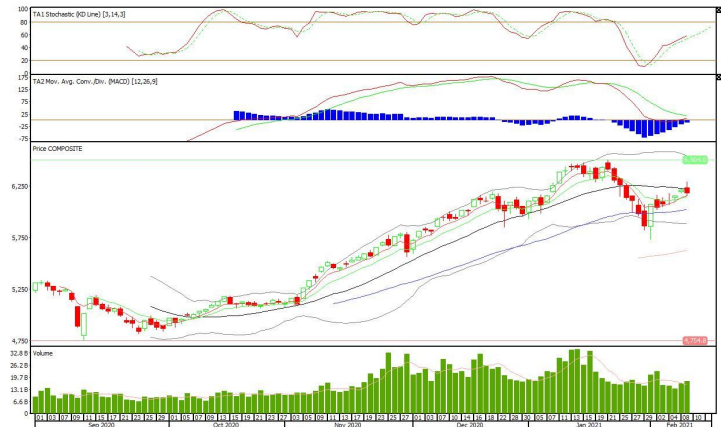
10 February 2021

IHSG

Range: 6.130 – 6.230

---Indeks ditutup membentuk pola long black marubozu yang merupakan sinyal bearish continuation namun masih di atas EMA5,10, stochastic netral dan MACD histogram convergence negatif. **Target** kenaikan indeks pada level **6.230** kemudian 6.280 dengan *support* di level 6.130 dan 6.080.

IHSG (6.182)



PT Alam Sutera Realty, Tbk

Rekomendasi: Buy

---Harga ditutup di atas MA20 dan membentuk pola long white marubozu yang merupakan sinyal bullish continuation, stochastic netral dan MACD histogram divergence positif. **Target** kenaikan harga pada level **246** kemudian 256 dengan *support* di level 226, *cut loss* jika *break* 216.

ASRI (236)



Technical Corner

10 February 2021

PT Bank Rakyat Indonesia, Tbk

Rekomendasi: Buy

---Harga ditutup di atas EMA5,10 dan membentuk pola white opening marubozu yang merupakan sinyal bullish continuation, stochastic netral dan MACD histogram convergence negatif. **Target** kenaikan harga pada level **4.740** kemudian 4.860 dengan *support* di level 4.500, *cut loss* jika *break* 4.380.

BBRI (4.620)



JPFA (1.465)

PT Japfa Comfeed Indonesia, Tbk

Rekomendasi: Buy

---Harga ditutup di atas EMA5,10 dan membentuk pola doji yang merupakan sinyal indecision, stochastic netral dan MACD histogram convergence negatif. **Target** kenaikan harga pada level **1.500** kemudian 1.535 dengan *support* di level 1.430, *cut loss* jika *break* 1.395.



Technical Corner

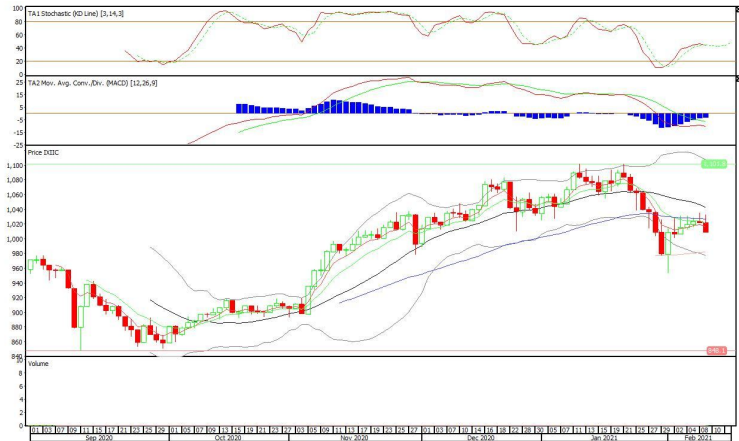
10 February 2021

Premier ETF Indonesia Consumer

Rekomendasi: Sell

---Harga ditutup di bawah EMA5,10 dan membentuk pola black closing marubozu yang merupakan sinyal bearish continuation, stochastic netral dan MACD histogram convergence negatif. **Target** pelemahan harga pada level **996** kemudian 983 dengan *resist* di level 1.022 kemudian 1.035.

XIIC (1.009)



XIJI (644)

Syariah Premier ETF JII

Rekomendasi: Sell

---Harga ditutup di bawah EMA5,10 dan membentuk pola long black marubozu yang merupakan sinyal bearish continuation, stochastic netral dan MACD histogram convergence negatif. **Target** pelemahan harga pada level **633** kemudian 622 dengan *resist* di level 655 kemudian 666.



Technical Corner

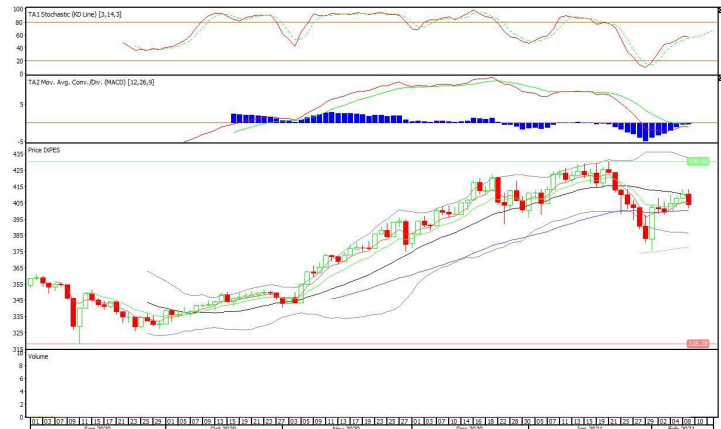
10 February 2021

Pinnacle Enhanced Sharia ETF

Rekomendasi: Sell

---Harga ditutup di bawah EMA5,10 dan membentuk pola long black marubozu yang merupakan sinyal bearish continuation, stochastic netral dan MACD histogram convergence negatif. **Target** pelemahan harga pada level **398** kemudian 392 dengan *resist* di level 410 kemudian 416.

XPES (404)



PT INDO PREMIER SEKURITAS

Pacific Century Place 16th Floor SCBD Lot 10
 Jl. Jend. Sudirman Kav. 52-53
 Jakarta Selatan 12190 - Indonesia
 p +62 21 5088 7200

ANALYSTS CERTIFICATION

The views expressed in this research report accurately reflect the analyst's personal views about any and all of the subject securities or issuers; and no part of the research analyst's compensation was, is, or will be, directly or indirectly, related to the specific recommendations or views expressed in the report.

DISCLAIMERS

This research is based on information obtained from sources believed to be reliable, but we do not make any representation or warranty nor accept any responsibility or liability as to its accuracy, completeness or correctness. Opinions expressed are subject to change without notice. This document is prepared for general circulation. Any recommendations contained in this document does not have regard to the specific investment objectives, financial situation and the particular needs of any specific addressee. This document is not and should not be construed as an offer or a solicitation of an offer to purchase or subscribe or sell any securities. PT. Indo Premier Sekuritas or its affiliates may seek or will seek investment banking or other business relationships with the companies in this report.

Refer to Important disclosures on the last of this report