

Technical Corner

9 February 2021

IHSG

Range: 6.165 – 6.255

---Indeks ditutup di atas EMA5,10 dan membentuk pola small bullish candle, stochastic netral dan MACD histogram convergence negatif. **Target** kenaikan indeks pada level **6.255** kemudian 6.300 dengan *support* di level 6.165 dan 6.120.

IHSG (6.209)

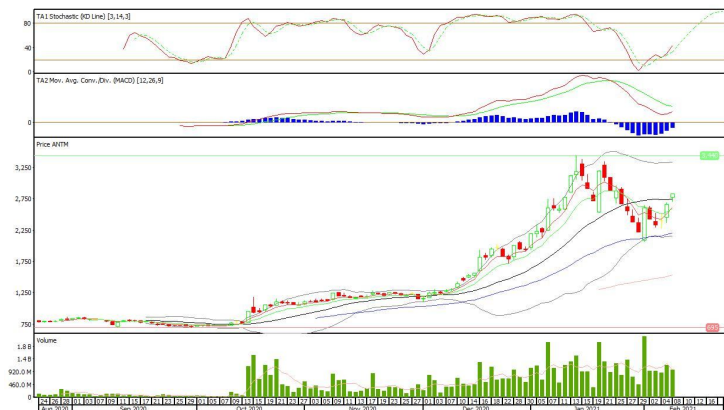


PT Aneka Tambang, Tbk

Rekomendasi: Buy

---Harga ditutup di atas EMA5,10 dan membentuk pola white closing marubozu yang merupakan sinyal bullish continuation, stochastic netral dan MACD histogram convergence negatif. **Target** kenaikan harga pada level **2.890** kemudian 2.950 dengan *support* di level 2.770, *cut loss* jika *break* 2.710.

ANTM (2.830)



Technical Corner

9 February 2021

PT Pembangunan Perumahan, Tbk

Rekomendasi: Buy

---Harga ditutup di di atas EMA5,10 dan membentuk pola long white marubozu yang merupakan sinyal bullish continuation, stochastic memasuki zona netral dan MACD histogram convergence negatif. **Target** kenaikan harga pada level **1.885** kemudian 1.970 dengan *support* di level 1.715, *cut loss* jika *break* 1.630.

PTPP (1.800)



PT Pakuwon Jati, Tbk

Rekomendasi: Buy

---Harga ditutup di atas EMA5,10 dan membentuk pola white closing marubozu yang merupakan sinyal bullish continuation, stochastic netral dan MACD bullish crossover. **Target** kenaikan harga pada level **545** kemudian 560 dengan *support* di level 515, *cut loss* jika *break* 500.

PWON (530)



Technical Corner

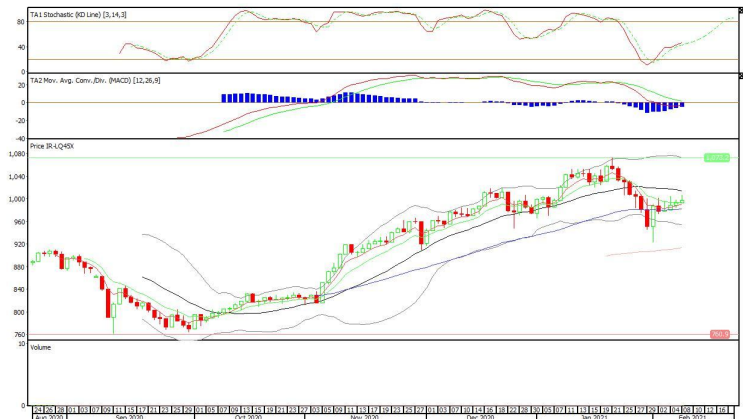
9 February 2021

Premier ETF LQ-45

Rekomendasi: Buy

---Harga ditutup di atas EMA5,10 dan membentuk pola white opening marubozu yang merupakan sinyal bullish continuation, stochastic netral dan MACD histogram convergence negatif. **Target** kenaikan harga pada level **1.001** kemudian 1.005 dengan *support* di level 993, *cut loss* jika *break* 989.

R-LQ45X (997)



Batavia Smart Liquid ETF

Rekomendasi: Buy

---Harga ditutup di atas EMA5,10 dan membentuk pola white opening marubozu yang merupakan sinyal bullish continuation, stochastic netral dan MACD histogram convergence positif. **Target** kenaikan harga pada level **472** kemudian 475 dengan *support* di level 466, *cut loss* jika *break* 463.

XBLQ (469)



Technical Corner

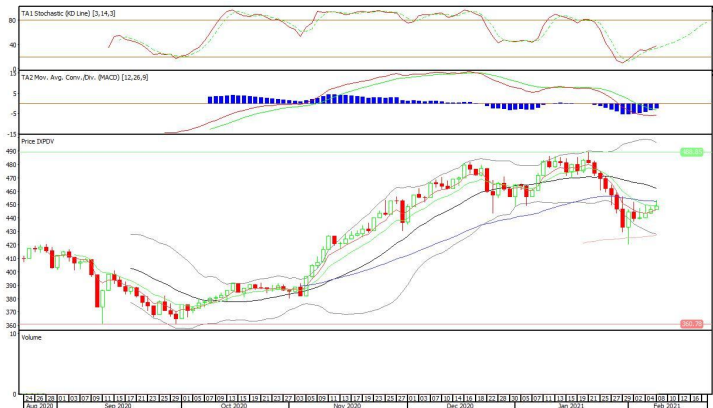
9 February 2021

XPDV (449)

Pinnacle Core High Dividend ETF

Rekomendasi: Buy

---Harga ditutup di atas EMA5 dan membentuk pola white opening marubozu, stochastic netral dan MACD histogram convergence negatif. **Target** kenaikan harga pada level **453** kemudian 457 dengan *support* di level 445, *cut loss* jika *break* 441.



PT INDO PREMIER SEKURITAS
 Pacific Century Place 16th Floor SCBD Lot 10
 Jl. Jend. Sudirman Kav. 52-53
 Jakarta Selatan 12190 - Indonesia
 p +62 21 5088 7200

ANALYSTS CERTIFICATION

The views expressed in this research report accurately reflect the analyst's personal views about any and all of the subject securities or issuers; and no part of the research analyst's compensation was, is, or will be, directly or indirectly, related to the specific recommendations or views expressed in the report.

DISCLAIMERS

This research is based on information obtained from sources believed to be reliable, but we do not make any representation or warranty nor accept any responsibility or liability as to its accuracy, completeness or correctness. Opinions expressed are subject to change without notice. This document is prepared for general circulation. Any recommendations contained in this document does not have regard to the specific investment objectives, financial situation and the particular needs of any specific addressee. This document is not and should not be construed as an offer or a solicitation of an offer to purchase or subscribe or sell any securities. PT. Indo Premier Sekuritas or its affiliates may seek or will seek investment banking or other business relationships with the companies in this report.

Refer to Important disclosures on the last of this report