

# Technical Corner

5 February 2021

## IHSG

Range: 6.040 – 6.170

---Indeks ditutup di atas EMA5,10 dan membentuk pola doji yang merupakan sinyal indecision, stochastic netral dan MACD histogram convergence negatif.

**Target** kenaikan indeks pada level **6.170** kemudian 6.235 dengan *support* di level 6.040 dan 5.975.

## IHSG (6.107)



## PT Bank Rakyat Indonesia, Tbk

Rekomendasi: Buy

---Harga ditutup di atas EMA5,10 dan membentuk pola spinning top yang merupakan sinyal indecision, stochastic netral dan MACD histogram convergence negatif. **Target** kenaikan harga pada level **4.580** kemudian 4.670 dengan *support* di level 4.400, *cut loss* jika *break* 4.310.

## BBRI (4.490)



# Technical Corner

5 February 2021

## PT BPD Jawa Barat dan Banten, Tbk

### Rekomendasi: Buy

---Harga ditutup di atas EMA5,10 dan membentuk pola long white marubozu yang merupakan sinyal bullish continuation, stochastic netral dan MACD histogram convergence negatif. **Target** kenaikan harga pada level **1.600** kemudian 1.635 dengan *support* di level 1.530, *cut loss* jika *break* 1.495.

## BJBR (1.565)



## PT XL Axiata, Tbk

### Rekomendasi: Buy

---Harga ditutup di atas EMA5,10 dan membentuk pola long white marubozu yang merupakan sinyal bullish continuation, stochastic netral dan MACD histogram convergence negatif. **Target** kenaikan harga pada level **2.480** kemudian 2.550 dengan *support* di level 2.340, *cut loss* jika *break* 2.270.

## EXCL (2.410)



# Technical Corner

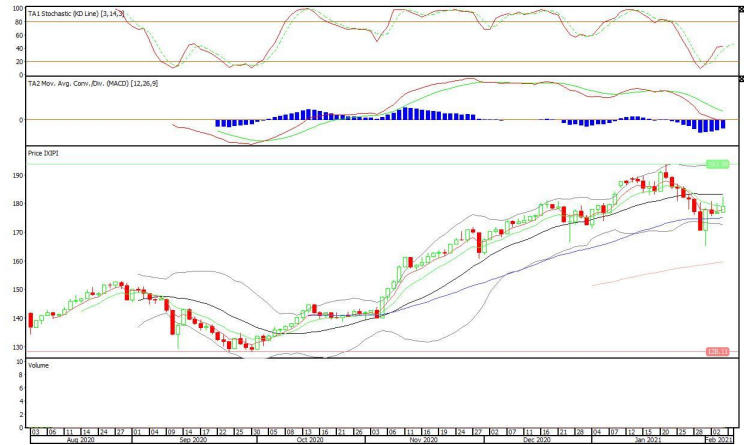
5 February 2021

## Premier ETF Pefindo i-Grade

**Rekomendasi: Buy**

---Harga ditutup di atas EMA5 dan membentuk pola white opening marubozu yang merupakan sinyal bullish continuation, stochastic netral dan MACD histogram convergence negatif. **Target** kenaikan harga pada level **183** kemudian 186 dengan *support* di level 176, *cut loss* jika *break* 173.

## XIPI (179)



## XIML (256)

## Premier ETF MSCI Indonesia Large Cap

**Rekomendasi: Buy**

---Harga ditutup di atas EMA5 dan membentuk white opening marubozu yang merupakan sinyal bullish continuation, stochastic netral dan MACD histogram convergence negatif. **Target** kenaikan harga pada level **259** kemudian 262 dengan *support* di level 253, *cut loss* jika *break* 250.



# Technical Corner

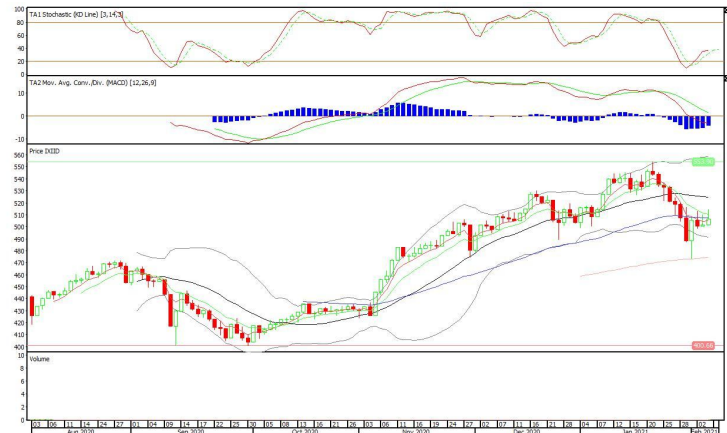
5 February 2021

## Premier ETF Index IDX30

### Rekomendasi: Buy

---Harga ditutup di atas EMA5 dan membentuk pola white opening marubozu yang merupakan sinyal bullish continuation, stochastic netral dan MACD histogram convergence negatif. **Target** kenaikan harga pada level **512** kemudian 517 dengan *support* di level 502, *cut loss* jika *break* 497.

## XIID (507)



## PT INDO PREMIER SEKURITAS

Pacific Century Place 16th Floor SCBD Lot 10  
 Jl. Jend. Sudirman Kav. 52-53  
 Jakarta Selatan 12190 - Indonesia  
 p +62 21 5088 7200

### ANALYSTS CERTIFICATION

The views expressed in this research report accurately reflect the analyst's personal views about any and all of the subject securities or issuers; and no part of the research analyst's compensation was, is, or will be, directly or indirectly, related to the specific recommendations or views expressed in the report.

### DISCLAIMERS

This research is based on information obtained from sources believed to be reliable, but we do not make any representation or warranty nor accept any responsibility or liability as to its accuracy, completeness or correctness. Opinions expressed are subject to change without notice. This document is prepared for general circulation. Any recommendations contained in this document does not have regard to the specific investment objectives, financial situation and the particular needs of any specific addressee. This document is not and should not be construed as an offer or a solicitation of an offer to purchase or subscribe or sell any securities. PT. Indo Premier Sekuritas or its affiliates may seek or will seek investment banking or other business relationships with the companies in this report.

Refer to Important disclosures on the last of this report