

Technical Corner

27 January 2021

IHSG

Range: 6.030– 6.250

---Indeks ditutup di bawah MA20 dan membentuk pola long black marubozu yang merupakan sinyal bearish continuation, stochastic netral dan MACD histogram divergence negatif. **Target** pelemahan indeks pada level 6.030 kemudian 5.920 dengan *resist* di level 6.250 dan 6.360.

IHSG (6.140)



PT Erajaya Swasembada, Tbk

Rekomendasi: Buy on Weakness

---Harga ditutup di atas EMA5,10 dan membentuk pola long black marubozu yang merupakan sinyal bearish continuation, stochastic death cross dan MACD histogram convergence positif. **Target** harga beli pada level 2.580 dengan *resist* di level 2.830, kemudian 2.980.

ERAA (2.680)



Technical Corner

27 January 2021

PT Indosat,Tbk

Rekomendasi: Buy on Weakness

--- Harga ditutup dibawah EMA5,10 dan membentuk pola spinning top yang merupakan sinyal indecision, stochastic netral dan MACD histogram divergence negatif. **Target** harga beli pada level **5.275** dengan *resist* di level 5.700, kemudian 5.900.

ISAT (5.425)



PT Jasamarga, Tbk

Rekomendasi: Buy on Weakness

---Harga tertahan EMA50 dan membentuk pola spinning top yang merupakan sinyal indecision, stochastic netral dan MACD histogram divergence negatif. **Target** harga beli pada level **4.480** dengan *resist* di level 4.680, kemudian 4.780.

JSMR (4.580)



Technical Corner

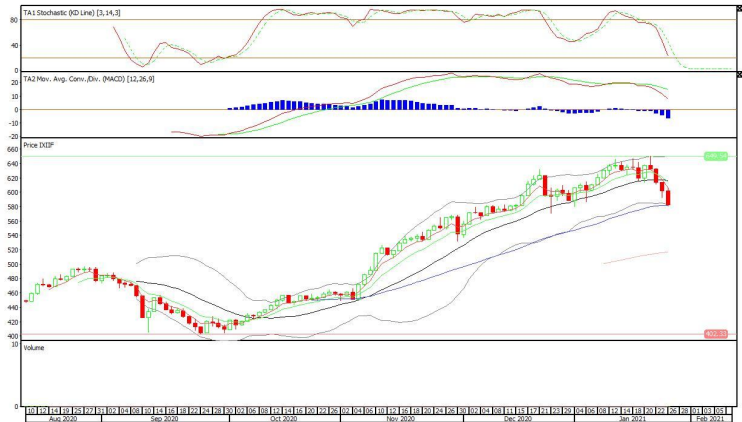
27 January 2021

Premier ETF Indonesia Financial

Rekomendasi: Sell

--- Harga ditutup di bawah MA20 dan membentuk pola long black marubozu yang merupakan sinyal bearish continuation, stochastic netral dan MACD histogram divergence positif. **Target** pelemahan harga pada level **562** kemudian 542 dengan *resist* di level 602, kemudian 622.

XIIF (582)

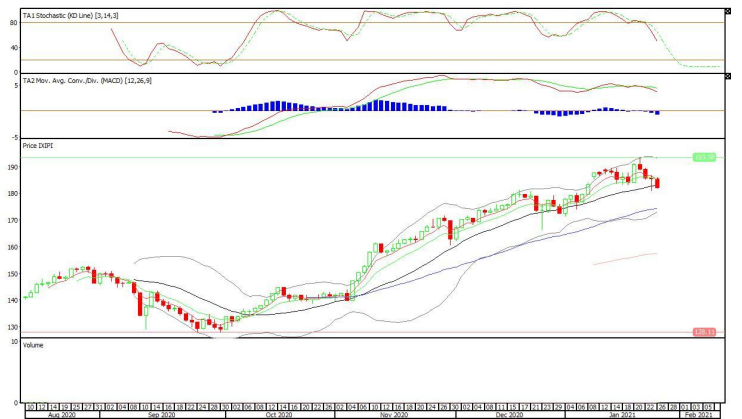


XIPI (182)

Premier ETF Pefindo i-Grade

Rekomendasi: Sell

--- Harga ditutup di bawah MA20 dan membentuk pola long black marubozu yang merupakan sinyal bearish continuation, stochastic netral dan MACD histogram divergence negatif. **Target** pelemahan harga pada level **179** kemudian 176 dengan *resist* di level 182, kemudian 185.



Technical Corner

27 January 2021

Premier ETF SRI-KEHATI

Rekomendasi: Sell

--- Harga ditutup dibawah MA20 dan membentuk pola white closing marubozu yang merupakan sinyal bearish continuation, stochastic netral dan MACD histogram divergence negatif. **Target** pelemahan harga pada level **383** kemudian 375 dengan *resist* di level 399, kemudian 407.

XISR (391)



PT INDO PREMIER SEKURITAS
 Pacific Century Place 16th Floor SCBD Lot 10
 Jl. Jend. Sudirman Kav. 52-53
 Jakarta Selatan 12190 - Indonesia
 p +62 21 5088 7200

ANALYSTS CERTIFICATION

The views expressed in this research report accurately reflect the analyst's personal views about any and all of the subject securities or issuers; and no part of the research analyst's compensation was, is, or will be, directly or indirectly, related to the specific recommendations or views expressed in the report.

DISCLAIMERS

This research is based on information obtained from sources believed to be reliable, but we do not make any representation or warranty nor accept any responsibility or liability as to its accuracy, completeness or correctness. Opinions expressed are subject to change without notice. This document is prepared for general circulation. Any recommendations contained in this document does not have regard to the specific investment objectives, financial situation and the particular needs of any specific addressee. This document is not and should not be construed as an offer or a solicitation of an offer to purchase or subscribe or sell any securities. PT. Indo Premier Sekuritas or its affiliates may seek or will seek investment banking or other business relationships with the companies in this report.

Refer to Important disclosures on the last of this report