

# Technical Corner

26 January 2021

## IHSG

Range: 6.190– 6.330

---Indeks ditutup tertahan di atas MA20 dan membentuk pola hammer yang merupakan sinyal bullish reversal, stochastic memasuki zona netral dan MACD histogram divergence negatif. **Target** kenaikan indeks pada level 6.330 kemudian 6.400 dengan *support* di level 6.190 dan 6.120.

## IHSG (6.259)



## PT BPD Jawa Barat dan Banten, Tbk

Rekomendasi: Buy

---Harga ditutup di atas EMA5,10 dan membentuk pola hammer yang merupakan sinyal bullish reversal, stochastic golden cross dan MACD histogram convergence negatif. **Target** kenaikan harga pada level 1.725 kemudian 1.775 dengan *support* di level 1.625, *cut loss* jika *break* 1.575

## BJBR (1.675)



# Technical Corner

26 January 2021

## PT Pakuwon Jati, Tbk

**Rekomendasi: Buy**

--- Harga tertahan EMA50 dan membentuk pola doji yang merupakan sinyal indecision, stochastic memasuki zona oversold dan MACD histogram divergence negatif. **Target** kenaikan harga pada level **530** kemudian 545 dengan *support* di level 500, *cut loss* jika *break* 485.

## PWON (515)



## PT Timah, Tbk

**Rekomendasi: Buy**

---Harga ditutup di atas EMA5,10 dan membentuk pola long white marubozu yang merupakan sinyal bullish continuation, stochastic netral dan MACD histogram convergence positif. **Target** kenaikan harga pada level **2.300** kemudian 2.370 dengan *support* di level 2.160, *cut loss* jika *break* 2.090.

## TINS (2.230)



# Technical Corner

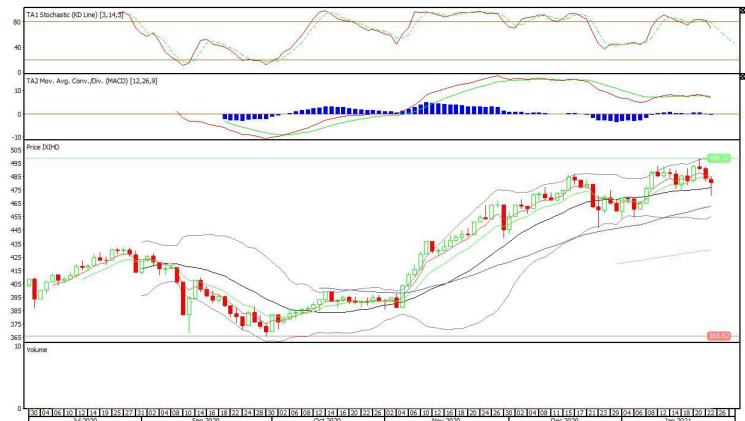
26 January 2021

## Premier ETF IDX High Dividend 20

**Rekomendasi: Buy on Weakness**

--- Harga ditutup di atas MA20 dan membentuk pola hammer yang merupakan pola bullish reversal, stochastic memasuki zona netral dan MACD histogram divergence positif. **Target** harga beli pada level **477** dengan *resist* di level 486, kemudian 491.

## XIHD (481)



## Insight ETF FTSE LVF Index

**Rekomendasi: Buy on Weakness**

--- Harga ditutup di atas MA20 dan membentuk pola hammer yang merupakan sinyal bullish reversal, stochastic netral dan MACD histogram divergence negatif. **Target** harga beli pada level **115** dengan *resist* di level 118, kemudian 120.

## XILV (116)



# Technical Corner

26 January 2021

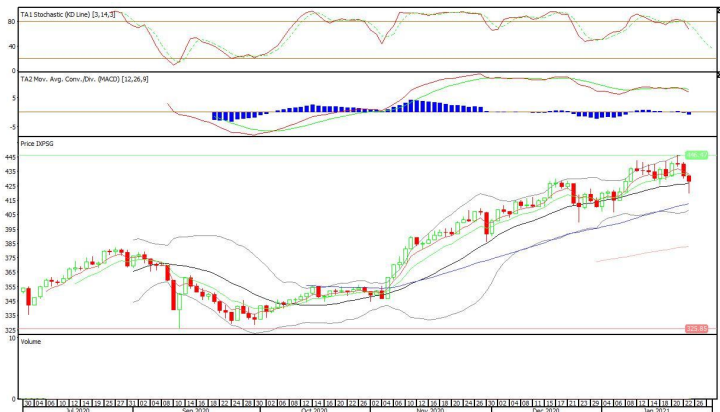
## XPSG (428)

### Pinnacle Indonesia ESG ETF

#### Rekomendasi: Buy on Weakness

--- Harga ditutup diatas MA20 dan membentuk pola hammer yang merupakan sinyal bullish reversal, stochastic memasuki zona netral dan MACD histogram divergence negatif.

**Target** harga beli pada level **423** dengan *resist* di level 437, kemudian 446.



**PT INDO PREMIER SEKURITAS**  
 Pacific Century Place 16th Floor SCBD Lot 10  
 Jl. Jend. Sudirman Kav. 52-53  
 Jakarta Selatan 12190 - Indonesia  
 p +62 21 5088 7200

#### ANALYSTS CERTIFICATION

The views expressed in this research report accurately reflect the analyst's personal views about any and all of the subject securities or issuers; and no part of the research analyst's compensation was, is, or will be, directly or indirectly, related to the specific recommendations or views expressed in the report.

#### DISCLAIMERS

This research is based on information obtained from sources believed to be reliable, but we do not make any representation or warranty nor accept any responsibility or liability as to its accuracy, completeness or correctness. Opinions expressed are subject to change without notice. This document is prepared for general circulation. Any recommendations contained in this document does not have regard to the specific investment objectives, financial situation and the particular needs of any specific addressee. This document is not and should not be construed as an offer or a solicitation of an offer to purchase or subscribe or sell any securities. PT. Indo Premier Sekuritas or its affiliates may seek or will seek investment banking or other business relationships with the companies in this report.

**Refer to Important disclosures on the last of this report**