

# Technical Corner

22 January 2021

## IHSG

Range: 6.355 – 6.475

---Indeks ditutup membentuk long black marubozu yang merupakan sinyal bearish continuation tetapi masih di atas EMA5,10, stochastic konsisten overbought dan MACD bearish cross over. **Target** kenaikan indeks pada level **6.475** kemudian 6.535 dengan *support* di level 6.355 dan 6.295.

## IHSG (6.415)



## PT Kalbe Farma, Tbk

Rekomendasi: Buy

---Harga ditutup di atas EMA5,10, dan membentuk pola long white marubozu, stochastic netral dan MACD histogram divergence positif. **Target** kenaikan harga pada level **1.710** kemudian 1.765 dengan *support* di level 1.600, *cut loss* jika *break* 1.545.

## KLBF (1.655)



# Technical Corner

22 January 2021

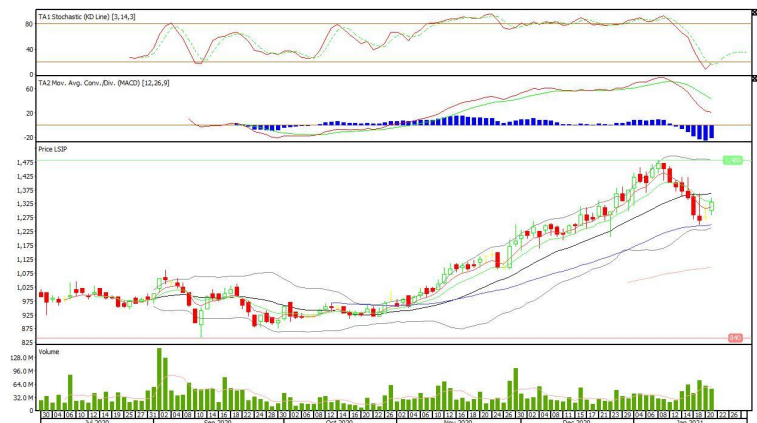
## PT PP London Sumatra Indonesia, Tbk

### Rekomendasi: Buy

--- Harga ditutup di atas EMA5, dan membentuk pola long white marubozu yang merupakan sinyal bullish continuation, stochastic golden cross dan MACD histogram convergence negatif.

**Target** kenaikan harga pada level **1.360** kemudian 1.390 dengan *support* di level 1.300, *cut loss* jika *break* 1.270.

## LSIP (1,330)



## PT Perusahaan Gas Negara, Tbk

### Rekomendasi: Buy

--- Harga ditutup di atas EMA5,10 dan membentuk pola doji yang merupakan sinyal indecision, stochastic netral dan MACD histogram divergence positif.

**Target** kenaikan harga pada level **1.820** kemudian 1.875 dengan *support* di level 1.710, *cut loss* jika *break* 1.655.

## PGAS (1,765)



# Technical Corner

22 January 2021

## Cipta ETF Index LQ45

**Rekomendasi: Sell**

--- Harga ditutup membentuk pola shooting star yang merupakan sinyal bearish reversal, stochastic death cross dan MACD histogram convergence positif. **Target** pelemahan harga pada level **102** kemudian 100 dengan *resist* di level 106, kemudian 108.

## XCLQ (104)



## Premier ETF SRI-KEHATI

**Rekomendasi: Sell**

--- Harga ditutup membentuk pola shooting star yang merupakan sinyal bearish reversal, stochastic overbought dan MACD histogram convergence positif. **Target** pelemahan harga pada level **399** kemudian 391 dengan *resist* di level 415, kemudian 423.

## XISR (407)



# Technical Corner

22 January 2021

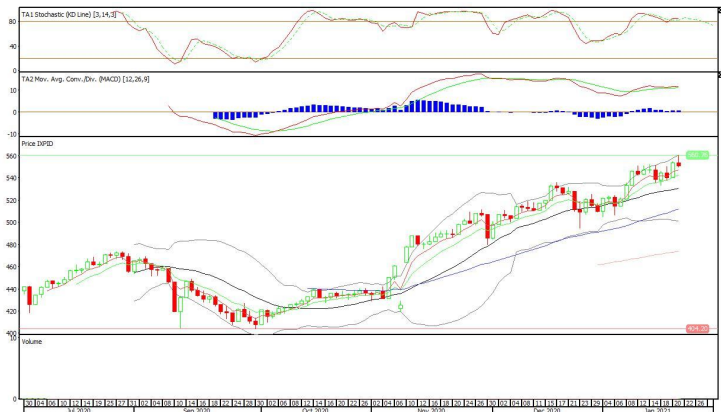
## Pinnacle IDX30 ETF

### Rekomendasi: Sell

--- Harga ditutup membentuk pola shooting star yang merupakan sinyal bearish reversal, stochastic overbought dan MAC histogram convergence positif.

**Target** pelemahan harga pada level **541** kemudian 531 dengan *resist* di level 561, kemudian 571.

### XPID (551)



**PT INDO PREMIER SEKURITAS**  
 Pacific Century Place 16th Floor SCBD Lot 10  
 Jl. Jend. Sudirman Kav. 52-53  
 Jakarta Selatan 12190 - Indonesia  
 p +62 21 5088 7200

#### ANALYSTS CERTIFICATION

The views expressed in this research report accurately reflect the analyst's personal views about any and all of the subject securities or issuers; and no part of the research analyst's compensation was, is, or will be, directly or indirectly, related to the specific recommendations or views expressed in the report.

#### DISCLAIMERS

This research is based on information obtained from sources believed to be reliable, but we do not make any representation or warranty nor accept any responsibility or liability as to its accuracy, completeness or correctness. Opinions expressed are subject to change without notice. This document is prepared for general circulation. Any recommendations contained in this document does not have regard to the specific investment objectives, financial situation and the particular needs of any specific addressee. This document is not and should not be construed as an offer or a solicitation of an offer to purchase or subscribe or sell any securities. PT. Indo Premier Sekuritas or its affiliates may seek or will seek investment banking or other business relationships with the companies in this report.

**Refer to Important disclosures on the last of this report**