

Technical Corner

13 January 2021

IHSG

Range: 6.355 – 6.435

---Indeks ditutup di atas EMA5,10 dan membentuk pola doji yang merupakan sinyal indecision, stochastic konsisten di area overbought dan MACD histogram divergence positif. **Target** kenaikan indeks pada level **6.435** kemudian 6.475 dengan *support* di level 6.355 dan 6.315.

IHSG (6.396)



PT Alam Sutra Realty, Tbk

Rekomendasi: Buy

---Harga ditutup di atas EMA5,10 dan membentuk pola long white marubozu yang merupakan sinyal bullish continuation, stochastic netral dan MACD histogram convergence negatif. **Target** kenaikan harga pada level **292** kemudian 306 dengan *support* di level 264, *cut loss* jika *break* 250.

ASRI (278)



Technical Corner

13 January 2021

PT Vale Indonesia, Tbk

Rekomendasi: Buy

--- Harga ditutup di atas EMA5,10 dan membentuk pola long white marubozu yang merupakan sinyal bullish continuation, stochastic di zona netral dan MACD histogram convergence positif.

Target kenaikan harga pada level **6.700** kemudian 6.925 dengan *support* di level 6.250, *cut loss* jika *break* 6.025.

INCO (6.475)



TINS (1.805)



PT Timah, Tbk

Rekomendasi: Buy

---Harga ditutup di atas EMA5,10 dan membentuk pola long white marubozu yang merupakan sinyal bullish continuation, stochastic netral dan MACD histogram convergence positif. **Target** kenaikan harga pada level **1.860** kemudian 1.915 dengan *support* di level 1.760, *cut loss* jika *break* 1.705.

Technical Corner

13 January 2021

Premier ETF Indonesia Financial

Rekomendasi: Buy

--- Harga ditutup di atas EMA5,10 dan membentuk pola long white marubozu yang merupakan sinyal bullish continuation, stochastic memasuki zona overbought dan MACD bullish cross over. **Target** kenaikan harga pada level **643** kemudian 649 dengan *support* di level 631, *cut loss* jika *break* 625.

XIIF (637)

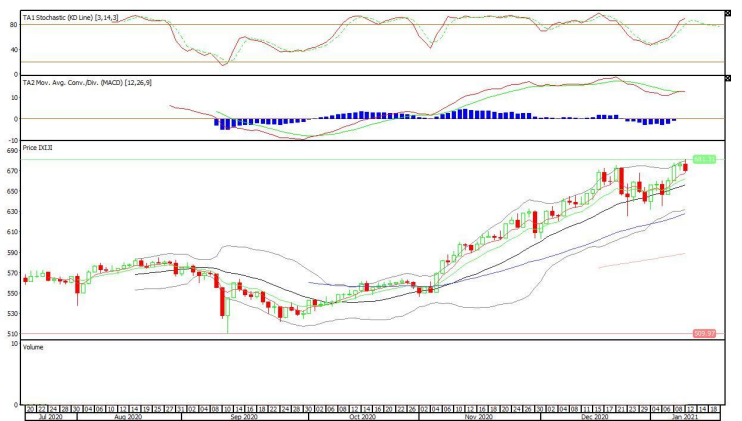


XIJI (670)

Syariah Premier ETF JII

Rekomendasi: Sell

--- Harga ditutup di atas EMA5,10 dan membentuk pola long black marubozu yang merupakan sinyal bearish continuation, stochastic overbought dan MACD histogram divergence negatif. **Target** pelemahan harga pada level **661** kemudian 652 dengan *resist* di level 679 kemudian 688.



Technical Corner

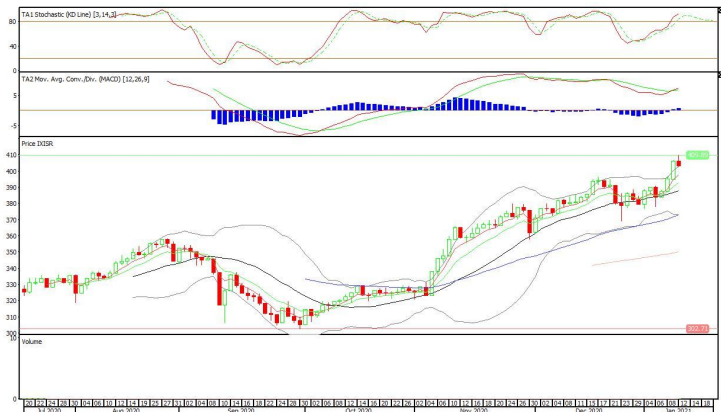
13 January 2021

XISR (403)

Premier ETF SRI-KEHATI

Rekomendasi: Sell

--- Harga ditutup di atas EMA5,10 dan membentuk pola black closing marubozu yang merupakan sinyal bearish continuation, stochastic overbought dan MACD histogram divergence positif. **Target** pelemahan harga pada level **399** kemudian 395 dengan *resist* di level 407 kemudian 411.



PT INDO PREMIER SEKURITAS
 Pacific Century Place 16th Floor SCBD Lot 10
 Jl. Jend. Sudirman Kav. 52-53
 Jakarta Selatan 12190 - Indonesia
 p +62 21 5088 7200

ANALYSTS CERTIFICATION

The views expressed in this research report accurately reflect the analyst's personal views about any and all of the subject securities or issuers; and no part of the research analyst's compensation was, is, or will be, directly or indirectly, related to the specific recommendations or views expressed in the report.

DISCLAIMERS

This research is based on information obtained from sources believed to be reliable, but we do not make any representation or warranty nor accept any responsibility or liability as to its accuracy, completeness or correctness. Opinions expressed are subject to change without notice. This document is prepared for general circulation. Any recommendations contained in this document does not have regard to the specific investment objectives, financial situation and the particular needs of any specific addressee. This document is not and should not be construed as an offer or a solicitation of an offer to purchase or subscribe or sell any securities. PT. Indo Premier Sekuritas or its affiliates may seek or will seek investment banking or other business relationships with the companies in this report.

Refer to Important disclosures on the last of this report