

Technical Corner

12 January 2021

IHSG

Range: 6.310 – 6.460

---Indeks ditutup di atas EMA5,10 dan membentuk pola white marubozu yang merupakan sinyal bullish continuation, stochastic memasuki zona overbought dan MACD bullish cross over. **Target** kenaikan indeks pada level **6.460** kemudian 6.535 dengan *support* di level 6.310 dan 6.235.

IHSG (6.383)



PT Bank Negara Indonesia, Tbk

Rekomendasi: Buy

---Harga ditutup di atas EMA5,10 dan membentuk pola long white marubozu yang merupakan sinyal bullish continuation, stochastic netral dan MACD histogram convergence negatif. **Target** kenaikan harga pada level **6.625** kemudian 6.725 dengan *support* di level 6.425, *cut loss* jika *break* 6.325.

BBNI (6.525)



Technical Corner

12 January 2021

PT Bank Tabungan Negara, Tbk

Rekomendasi: Buy

--- Harga ditutup di atas EMA5,10 dan membentuk pola white opening marubozu yang merupakan sinyal bullish continuation, stochastic di zona netral dan MACD histogram convergence negatif.

Target kenaikan harga pada level **1.970** kemudian 2.030 dengan *support* di level 1.850, *cut loss* jika *break* 1.790.

BBTN (1.910)



PT Summarecon Agung, Tbk

Rekomendasi: Buy

---Harga ditutup di atas EMA5,10 dan membentuk pola long white marubozu yang merupakan sinyal bullish continuation, stochastic golden cross dan MACD histogram convergence negatif.

Target kenaikan harga pada level **850** kemudian 870 dengan *support* di level 810, *cut loss* jika *break* 790.

SMRA (830)



Technical Corner

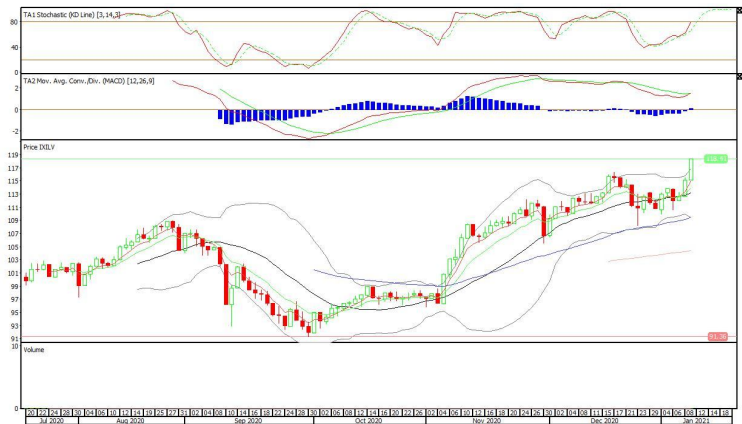
12 January 2021

Insight ETF FTSE LVF Index

Rekomendasi: Buy

--- Harga ditutup di atas EMA5,10 dan membentuk pola white marubozu yang merupakan sinyal bullish continuation, stochastic netral dan MACD bullish cross over. **Target** kenaikan harga pada level **121** kemudian 124 dengan *support* di level 115, *cut loss* jika *break* 112.

XILV (118)

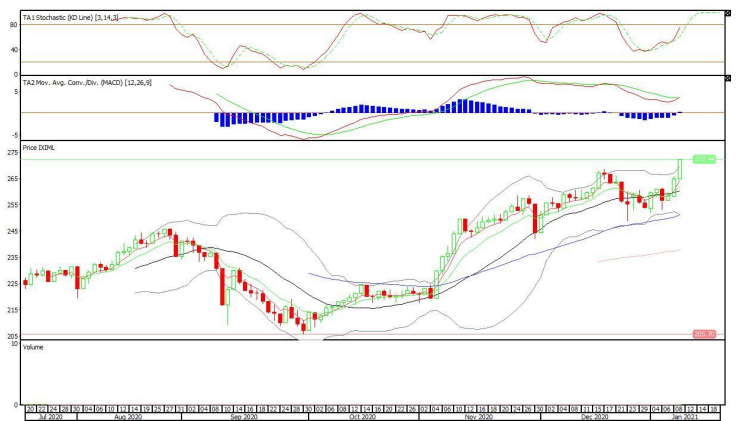


XIML (272)

Premier ETF MSCI Indonesia Large Cap

Rekomendasi: Buy

--- Harga ditutup di atas EMA5,10 dan membentuk pola white marubozu yang merupakan sinyal bullish continuation, stochastic di zona netral dan MACD bullish cross over. **Target** kenaikan harga pada level **279** kemudian 286 dengan *support* di level 265, *cut loss* jika *break* 258.



Technical Corner

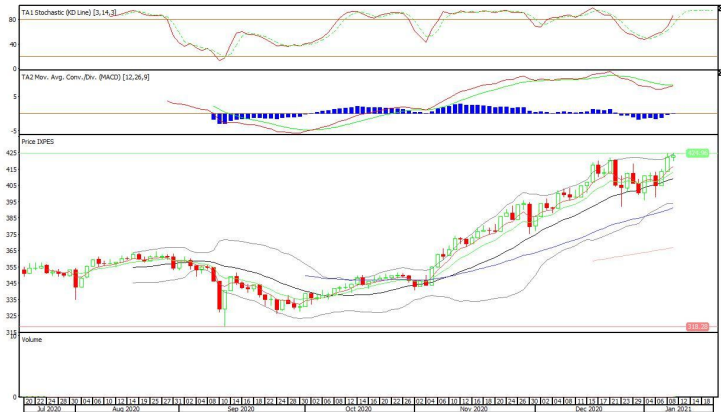
12 January 2021

Pinnacle Enhanced Sharia ETF

Rekomendasi: Buy

--- Harga ditutup di atas EMA5,10 dan membentuk pola spinning top yang merupakan sinyal indecision, stochastic overbought dan MACD histogram convergence negatif. **Target** kenaikan harga pada level **426** kemudian 429 dengan *support* di level 420, *cut loss* jika *break* 417.

XPES (423)



PT INDO PREMIER SEKURITAS
 Pacific Century Place 16th Floor SCBD Lot 10
 Jl. Jend. Sudirman Kav. 52-53
 Jakarta Selatan 12190 - Indonesia
 p +62 21 5088 7200

ANALYSTS CERTIFICATION

The views expressed in this research report accurately reflect the analyst's personal views about any and all of the subject securities or issuers; and no part of the research analyst's compensation was, is, or will be, directly or indirectly, related to the specific recommendations or views expressed in the report.

DISCLAIMERS

This research is based on information obtained from sources believed to be reliable, but we do not make any representation or warranty nor accept any responsibility or liability as to its accuracy, completeness or correctness. Opinions expressed are subject to change without notice. This document is prepared for general circulation. Any recommendations contained in this document does not have regard to the specific investment objectives, financial situation and the particular needs of any specific addressee. This document is not and should not be construed as an offer or a solicitation of an offer to purchase or subscribe or sell any securities. PT. Indo Premier Sekuritas or its affiliates may seek or will seek investment banking or other business relationships with the companies in this report.

Refer to Important disclosures on the last of this report