

# Technical Corner

7 January 2021

## IHSG

Range: 5.990 – 6.135

---Indeks ditutup di bawah EMA5 dan membentuk pola long black marubozu yang merupakan sinyal bearish continuation, stochastic netral dan MACD histogram divergence negatif. **Target** pelemahan indeks pada level **5.990** kemudian 5.905 dengan *resist* di level 6.135 dan 6.220.

## IHSG (6.065)



## PT Wijaya Karya Beton, Tbk

Rekomendasi: Buy

---Harga ditutup di atas EMA5,10 dan membentuk pola doji yang merupakan sinyal indecision, stochastic netral sedangkan MACD histogram divergence negatif. **Target** kenaikan harga pada level **426** kemudian 436 dengan *support* di level 406, *cut loss* jika *break* 396.

## WTON (412)



# Technical Corner

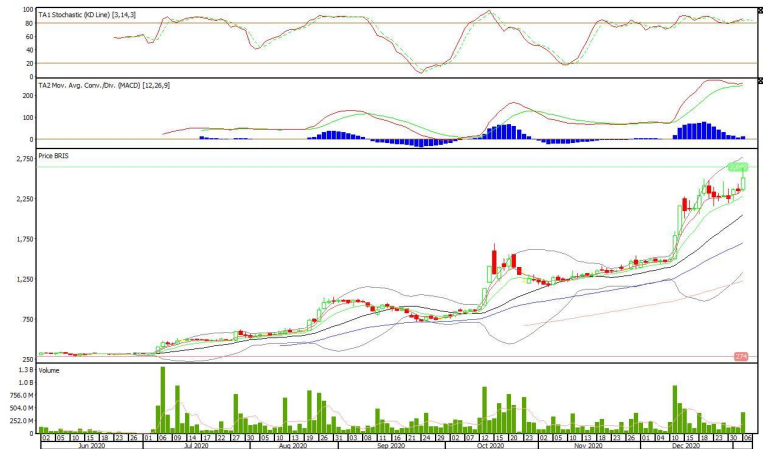
7 January 2021

## PT Bank BRISyariah, Tbk

### Rekomendasi: Buy

--- Harga ditutup di atas EMA5,10 dan membentuk pola long white marubozu yang merupakan sinyal bullish continuatin, stochastic konsisten bergerak di area overbought dan MACD histogram divergence positif. **Target** kenaikan harga pada level **2.640** kemudian 2.780 dengan *support* di level 2.360, *cut loss* jika *break* 2.230.

## BRIS (2.510)

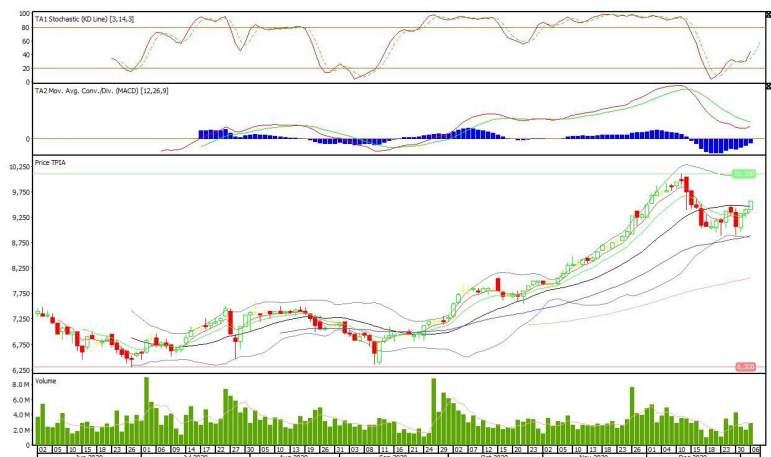


## PT Chandra Asri Petrochemical, Tbk

### Rekomendasi: Buy

---Harga ditutup di atas MA20 dan membentuk pola white marubozu yang merupakan sinyal bullish continuation, stochastic netral dan MACD histogram convergence negatif. **Target** kenaikan harga pada level 9.750 kemudian 9.875 dengan *support* di level 9.375, *cut loss* jika *break* 9.200.

## TPIA (9.575)



# Technical Corner

7 January 2021

## Premier ETF Sri-Kehati

**Rekomendasi: Buy on Weakness**

--- Harga ditutup di bawah EMA5,10 dan membentuk pola long black marubozu yang merupakan sinyal bearish continuation, stochastic netral dan MACD histogram divergence negatif. **Target** harga beli pada level **377** dengan *resist* di level 388 kemudian 396.

## XISR (383)

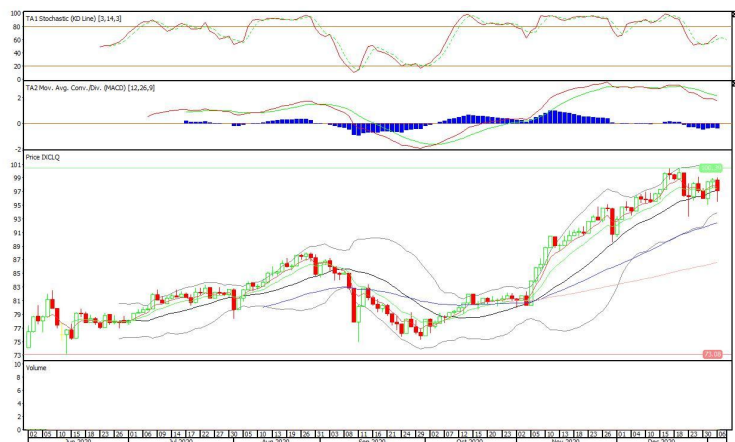


## RD Indeks Cipta ETF Index LQ45

**Rekomendasi: Buy on Weakness**

--- Harga ditutup di bawah EMA5,10 dan membentuk pola long black marubozu yang merupakan sinyal bearish continuation, stochastic netral dan MACD histogram divergence negatif. **Target** harga beli pada level 95 dengan *resist* di level 99 kemudian 100.

## XCLQ (97)



# Technical Corner

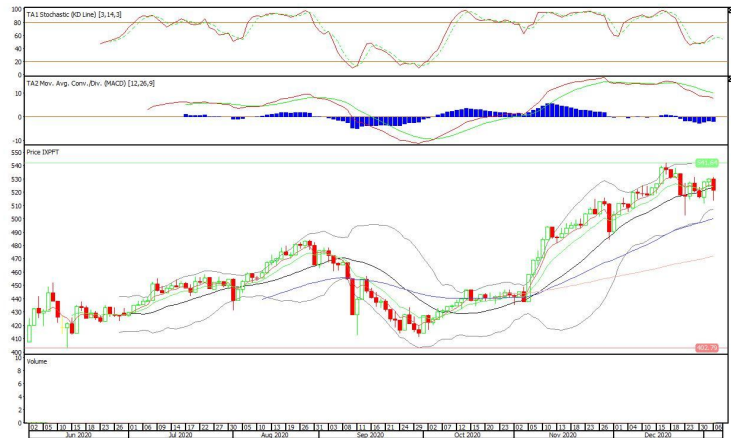
7 January 2021

## XPFT (521)

### RD Indeks Pinnacle FTSE Indonesia ETF

#### Rekomendasi: Buy on Weakness

--- Harga ditutup di bawah EMA5,10 dan membentuk pola long black marubozu yang merupakan sinyal bearish continuation, stochastic netral dan MACD histogram divergence negatif. **Target** harga beli pada level **513** dengan *resist* di level 529 dan 539.



### PT INDO PREMIER SEKURITAS

Pacific Century Place 16th Floor SCBD Lot 10  
 Jl. Jend. Sudirman Kav. 52-53  
 Jakarta Selatan 12190 - Indonesia  
 p +62 21 5088 7200

#### ANALYSTS CERTIFICATION

The views expressed in this research report accurately reflect the analyst's personal views about any and all of the subject securities or issuers; and no part of the research analyst's compensation was, is, or will be, directly or indirectly, related to the specific recommendations or views expressed in the report.

#### DISCLAIMERS

This research is based on information obtained from sources believed to be reliable, but we do not make any representation or warranty nor accept any responsibility or liability as to its accuracy, completeness or correctness. Opinions expressed are subject to change without notice. This document is prepared for general circulation. Any recommendations contained in this document does not have regard to the specific investment objectives, financial situation and the particular needs of any specific addressee. This document is not and should not be construed as an offer or a solicitation of an offer to purchase or subscribe or sell any securities. PT. Indo Premier Sekuritas or its affiliates may seek or will seek investment banking or other business relationships with the companies in this report.

**Refer to Important disclosures on the last of this report**