

Technical Corner

30 December 2020

IHSG

Range: 5.960 – 6.110

---Indeks ditutup membentuk pola long back marubozu yang merupakan sinyal bearish continuation namun masih tertahan di atas EMA10, stochastic netral dan MACD histogram divergence negatif. Target kenaikan indeks pada level 6.110 kemudian 6.185 dengan *support* di level 5.960 dan 5.885.

IHSG (6.036)

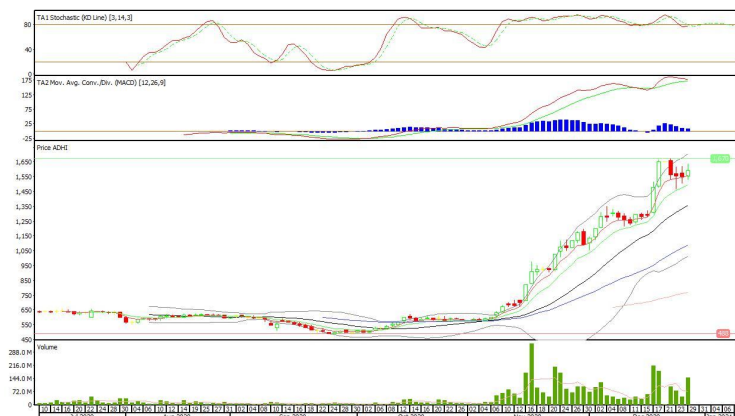


PT Adhi Karya, Tbk

Rekomendasi: Buy

---Harga ditutup di atas EMA5,10 dan membentuk pola long white marubozu yang merupakan sinyal bullish continuation, stochastic netral dan MACD histogram convergence positif. Target kenaikan harga pada level 1.630 kemudian 1.670 dengan *support* di level 1.550 *cut loss* jika *break* 1.510.

ADHI (1.590)



Technical Corner

30 December 2020

PT Pembangunan Perumahan, Tbk

Rekomendasi: Buy

--- Harga ditutup di atas EMA5,10 dan membentuk pola long white marubozu yang merupakan sinyal bullish continuation, stochastic netral dan MACD histogram divergence positif. **Target** kenaikan harga pada level **1.890** kemudian 1.935 dengan *support* di level 1.800 *cut loss* jika *break* 1.755.

PTPP (1.845)



PT Waskita Karya, Tbk

Rekomendasi: Buy

---Harga ditutup di atas EMA5,10 dan membentuk pola long white marubozu yang merupakan sinyal bullish continuation, stochastic netral dan MACD histogram convergence positif. **Target** kenaikan harga pada level **1.550** kemudian 1.615 dengan *support* di level 1.420 *cut loss* jika *break* 1.355.

WSKT (1.485)



Technical Corner

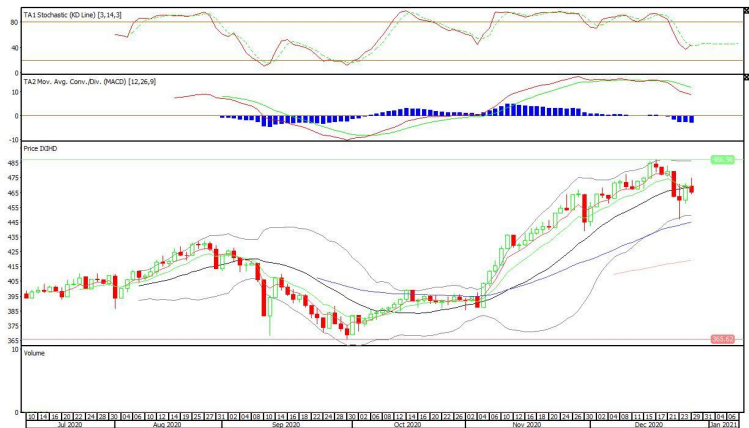
30 December 2020

Premier ETF IDX High Dividend 20

Rekomendasi: Sell

--- Harga ditutup di bawah EMA5,10 dan membentuk pola long black marubozu yang merupakan sinyal bearish continuation, stochastic golden cross dan MACD histogram divergence negatif. **Target** pelemahan harga pada level **462** kemudian 459 dengan *resist* di level 468 kemudian 471.

XIHD(465)



Premier ETF SMinfra18

Rekomendasi: Sell

--- Harga ditutup di bawa EMA5 dan membentuk small bearish candle, stochastic netral dan MACD histogram divergence negatif. **Target** pelemahan harga pada level **334** kemudian 330 dengan *resist* di level 342 kemudian 346.

XISI (338)



Technical Corner

30 December 2020

Premier ETF SRI-KEHATI

Rekomendasi: Sell

--- Harga ditutup di bawah EMA5,10 dan membentuk pola black closing marubozu yang merupakan sinyal bearish continuation, stochastic golden cross dan MACD histogram divergence negatif. **Target** pelemahan harga pada level **376** kemudian 370 dengan *resist* di level 388 kemudian 394.

XISR (382)



PT INDO PREMIER SEKURITAS
 Pacific Century Place 16th Floor SCBD Lot 10
 Jl. Jend. Sudirman Kav. 52-53
 Jakarta Selatan 12190 - Indonesia
 p +62 21 5088 7200

ANALYSTS CERTIFICATION

The views expressed in this research report accurately reflect the analyst's personal views about any and all of the subject securities or issuers; and no part of the research analyst's compensation was, is, or will be, directly or indirectly, related to the specific recommendations or views expressed in the report.

DISCLAIMERS

This research is based on information obtained from sources believed to be reliable, but we do not make any representation or warranty nor accept any responsibility or liability as to its accuracy, completeness or correctness. Opinions expressed are subject to change without notice. This document is prepared for general circulation. Any recommendations contained in this document does not have regard to the specific investment objectives, financial situation and the particular needs of any specific addressee. This document is not and should not be construed as an offer or a solicitation of an offer to purchase or subscribe or sell any securities. PT. Indo Premier Sekuritas or its affiliates may seek or will seek investment banking or other business relationships with the companies in this report.

Refer to Important disclosures on the last of this report