

Technical Corner

23 December 2020

IHSG

Range: 5.945 – 6.125

---Indeks ditutup di bawah EMA5 dan membentuk pola long black marubozu yang merupakan sinyal bearish continuation, stochastic overbought dan MACD histogram convergence positif. Target pelemahan indeks pada level 5.945 kemudian 5.865 dengan *resist* di level 6.125 dan 6.205.

IHSG (6.023)



PT BPD Jawa Barat dan Banten, Tbk

Rekomendasi: Buy on Weakness

---Harga ditutup dibawah EMA5 dan membentuk pola long black marubozu yang merupakan sinyal bearish continuation, stochastic death cross dan MACD histogram convergence positif. **Target** harga beli pada level 1.575 dengan *resist* di level 1.695 kemudian 1.755.

BJBR (1.635)



Technical Corner

23 December 2020

PT BPD Jawa Timur, Tbk

Rekomendasi: Buy on Weakness

--- Harga ditutup dibawah EMA5 dan membentuk pola black opening marubozu yang merupakan sinyal bearish continuation, stochastic netral dan MACD histogram convergence positif. **Target** harga beli pada level **690** dengan *resist* di level 740 kemudian 765.

BJTM (715)



PT Japfa Comfeed Indonesia, Tbk

Rekomendasi: Buy on Weakness

---Harga ditutup di bawah EMA5 dan membentuk pola black opening marubozu yang merupakan sinyal bearish continuation, stochastic netral dan MACD histogram convergence positif. **Target** harga beli pada level **1.520** dengan *resist* di level 1.610 kemudian 1.655.

JPFA (1.565)



Technical Corner

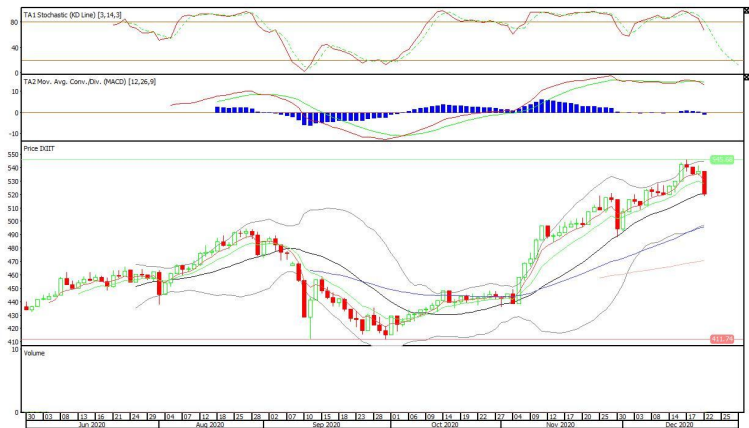
23 December 2020

Premier ETF IDX 30

Rekomendasi: Sell

--- Harga ditutup di bawah MA20 dan membentuk pola black opening marubozu yang merupakan sinyal bearish continuation, stochastic netral dan MACD histogram divergence negatif. **Target** pelemahan harga pada level **507** kemudian 494 dengan *resist* di level 533 kemudian 546.

XIIT (520)

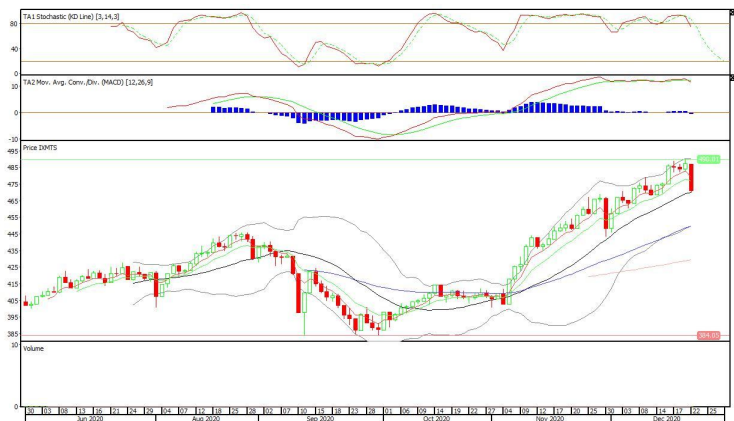


XMTS (471)

ETF MNC36 Likuid

Rekomendasi: Sell

--- Harga ditutup di bawah EMA10 dan membentuk pola black opening marubozu yang merupakan sinyal bearish continuation, stochastic netral dan MACD histogram divergence negatif. **Target** pelemahan harga pada level **459** kemudian 447 dengan *resist* di level 483 kemudian 495.



Technical Corner

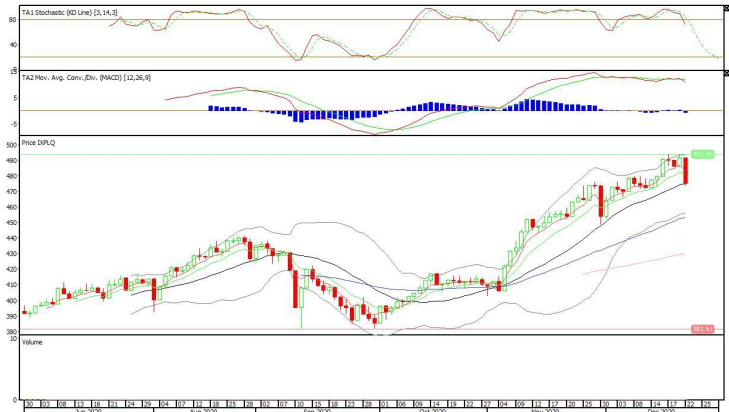
23 December 2020

Pinnacle Enhanced Liquid ETF

Rekomendasi: Sell

--- Harga ditutup di bawah EMA10 dan membentuk pola black opening marubozu yang merupakan sinyal bearish continuation, stochastic netral dan MACD histogram divergence negatif. **Target** pelemahan harga pada level **462** kemudian 449 dengan *resist* di level 488 kemudian 501.

XPLQ (475)



PT INDO PREMIER SEKURITAS
 Pacific Century Place 16th Floor SCBD Lot 10
 Jl. Jend. Sudirman Kav. 52-53
 Jakarta Selatan 12190 - Indonesia
 p +62 21 5088 7200

ANALYSTS CERTIFICATION

The views expressed in this research report accurately reflect the analyst's personal views about any and all of the subject securities or issuers; and no part of the research analyst's compensation was, is, or will be, directly or indirectly, related to the specific recommendations or views expressed in the report.

DISCLAIMERS

This research is based on information obtained from sources believed to be reliable, but we do not make any representation or warranty nor accept any responsibility or liability as to its accuracy, completeness or correctness. Opinions expressed are subject to change without notice. This document is prepared for general circulation. Any recommendations contained in this document does not have regard to the specific investment objectives, financial situation and the particular needs of any specific addressee. This document is not and should not be construed as an offer or a solicitation of an offer to purchase or subscribe or sell any securities. PT. Indo Premier Sekuritas or its affiliates may seek or will seek investment banking or other business relationships with the companies in this report.

Refer to Important disclosures on the last of this report