

Technical Corner

21 December 2020

IHSG

Range: 6.065 – 6.145

---Indeks ditutup di atas EMA5,10 dan membentuk pola doji yang merupakan sinyal indecision, stochastic konsisten berada di zona overbought dan MACD histogram convergence positif. Target kenaikan indeks pada level 6.145 kemudian 6.185 dengan *support* di level 6.065 dan 6.025.

IHSG (6.104)



PT XL Axiata, Tbk

Rekomendasi: Buy

---Harga ditutup di atas EMA5,10 dan membentuk pola doji yang merupakan sinyal indecision, stochastic death cross dan MACD histogram convergence positif. **Target** kenaikan harga pada level **2.870** kemudian 2.950 dengan *support* di level 2.710 *cut loss* jika *break* 2.620.

EXCL (2.790)



Technical Corner

21 December 2020

PT Lippo Karawaci, Tbk

Rekomendasi: Buy

--- Harga ditutup diatas EMA5,10 dan membentuk pola morning star yang merupakan sinyal bullish reversal, stochastic netral dan MACD histogram convergence positif. **Target** kenaikan harga pada level **250** kemudian 256 dengan *support* di level 238 *cut loss* jika *break* 232.

LPKR (244)



PT Unilever, Tbk

Rekomendasi: Buy

---Harga ditutup di atas EMA5,10 dan membentuk pola bullish engulfing yang merupakan sinyal bullish reversal, stochastic golden cross dan MACD histogram convergence negatif. **Target** kenaikan harga pada level **7.750** kemudian 7.900 dengan *support* di level 7.450 *cut loss* jika *break* 7.300.

UNVR (7.600)



Technical Corner

21 December 2020

Premier ETF IDX High Dividend 20

Rekomendasi: Sell

--- Harga ditutup di bawah EMA5 dan membentuk pola black opening marubozu yang merupakan sinyal bearish continuation, stochastic death cross dan MACD histogram divergence negatif. **Target** pelemahan harga pada level **472** kemudian 467 dengan *resist* di level 482 kemudian 487.

XIHD (477)

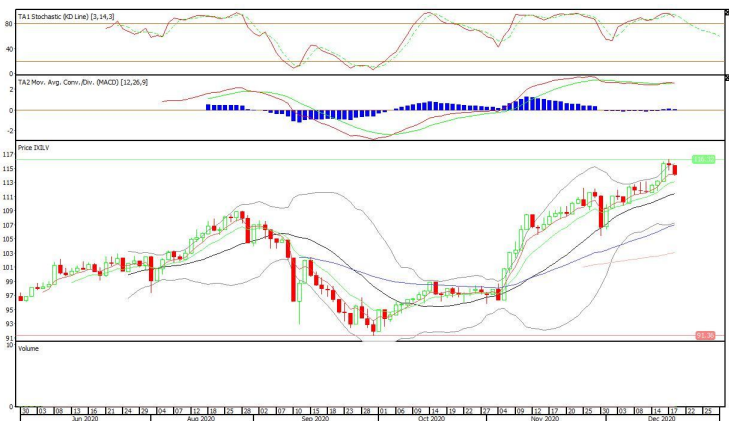


Insight ETF FTSE LVF Index

Rekomendasi: Sell

--- Harga ditutup di bawah EMA5 dan membentuk pola black opening marubozu yang merupakan sinyal bearish continuation, stochastic death cross dan MACD bearish cross over. **Target** pelemahan harga pada level **112** kemudian 110 dengan *resist* di level 116 kemudian 118.

XILV (114)



Technical Corner

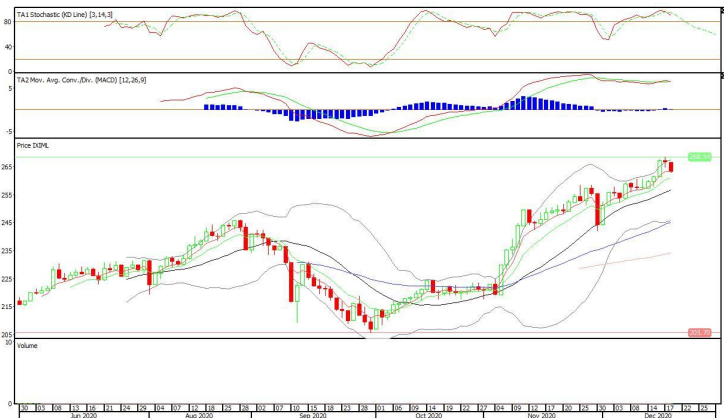
21 December 2020

XIML (263)

Premier ETF MSCI Indonesia Large Cap

Rekomendasi: Sell

--- Harga ditutup di bawah EMA5 dan membentuk pola black opening marubozu yang merupakan sinyal bearish continuation, stochastic death cross dan MACD bearish cross over. **Target** pelemahan harga pada level **259** kemudian 255 dengan *resist* di level 267 kemudian 271.



PT INDO PREMIER SEKURITAS

Pacific Century Place 16th Floor SCBD Lot 10
 Jl. Jend. Sudirman Kav. 52-53
 Jakarta Selatan 12190 - Indonesia
 p +62 21 5088 7200

ANALYSTS CERTIFICATION

The views expressed in this research report accurately reflect the analyst's personal views about any and all of the subject securities or issuers; and no part of the research analyst's compensation was, is, or will be, directly or indirectly, related to the specific recommendations or views expressed in the report.

DISCLAIMERS

This research is based on information obtained from sources believed to be reliable, but we do not make any representation or warranty nor accept any responsibility or liability as to its accuracy, completeness or correctness. Opinions expressed are subject to change without notice. This document is prepared for general circulation. Any recommendations contained in this document does not have regard to the specific investment objectives, financial situation and the particular needs of any specific addressee. This document is not and should not be construed as an offer or a solicitation of an offer to purchase or subscribe or sell any securities. PT. Indo Premier Sekuritas or its affiliates may seek or will seek investment banking or other business relationships with the companies in this report.

Refer to Important disclosures on the last of this report