

# Technical Corner

18 December 2020

## IHSG

Range: 6.075 – 6.155

---Indeks ditutup di atas EMA5,10 dan membentuk pola spinning top yang merupakan sinyal indecision, stochastic death cross dan MACD histogram divergence positif. Target kenaikan indeks pada level 6.155 kemudian 6.195 dengan *support* di level 6.075 dan 6.035.

## IHSG (6.113)



## PT H.M. Sampoerna, Tbk

Rekomendasi: Buy on Weakness

---Harga ditutup di bawah EMA5,10 dan membentuk pola long black marubozu yang merupakan sinyal bearish continuation, stochastic netral dan MACD histogram divergence negatif. **Target** harga beli pada level 1.570 dengan *resist* di level 1.610 kemudian 1.630.

## HMSP (1.590)



# Technical Corner

18 December 2020

## PT Vale Indonesia, Tbk

### Rekomendasi: Buy on Weakness

--- Harga ditutup diatas EMA5,10 dan membentuk long black marubozu yang merupakan sinyal bearish continuation, stochastic netral dan MACD histogram convergence positif. **Target** harga beli pada level **5.300** dengan *resist* di level 5.500 kemudian 5.600.

## INCO (5.400)



## PT Semen Baturaja, Tbk

### Rekomendasi: Buy

---Harga ditutup di atas EMA5,10 dan membentuk pola long white marubozu yang merupakan sinyal bullish continuation, stochastic golden cross dan MACD histogram convergence positif. **Target** kenaikan harga pada level **1.365** kemudian 1.430 dengan *support* di level 1.235 *cut loss* jika *break* 1.170.

## SMBR (1.300)



# Technical Corner

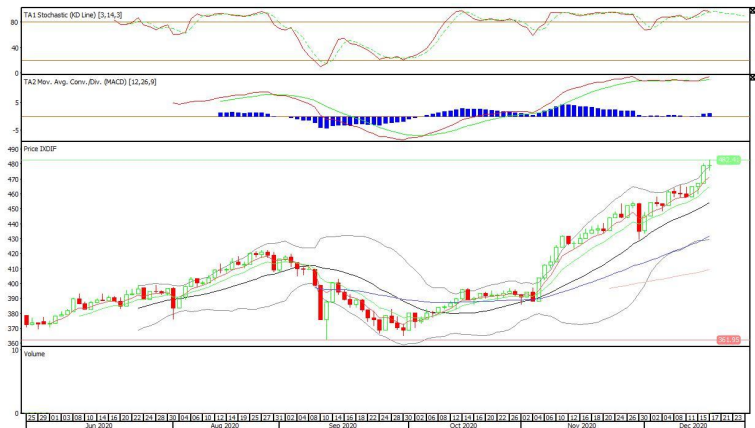
18 December 2020

## Danareka ETF Indonesia Top 40

### Rekomendasi: Buy

--- Harga ditutup di atas EMA5,10 dan membentuk pola doji yang merupakan sinyal indecision, stochastic konsisten bergerak di area overbought dan MACD histogram divergence positif. **Target** kenaikan harga pada level **482** kemudian 485 dengan *support* di level 476 *cut loss* jika *break* 473.

## XDIF (479)



## Premier ETF Indonesia Financial

### Rekomendasi: Buy

--- Harga ditutup di atas EMA5,10 dan membentuk pola white opening marubozu yang merupakan sinyal bullish continuation, stochastic konsisten bergerak di area overbought dan MACD bullish cross over. **Target** kenaikan harga pada level **627** kemudian 643 dengan *support* di level 595 *cut loss* jika *break* 579.

## XIIF (611)



# Technical Corner

18 December 2020

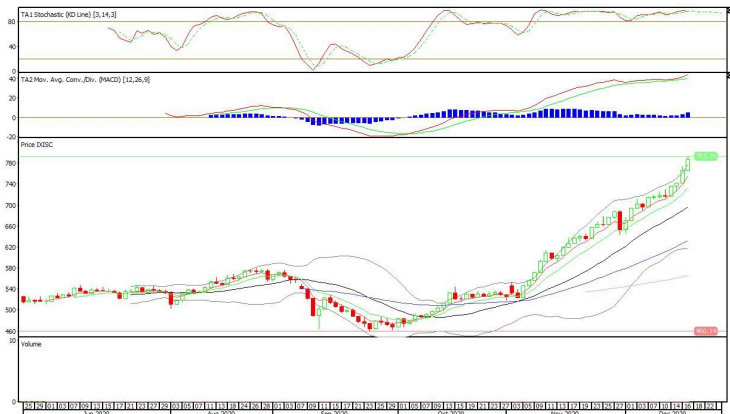
## XISC (787)

### Premier ETF Indonesia SOC

#### Rekomendasi: Buy

--- Harga ditutup di atas EMA5,10 dan membentuk pola white opening marubozu yang merupakan sinyal bullish continuation, stochastic death cross dan MACD histogram divergence positif.

**Target** kenaikan harga pada level **808** kemudian 829 dengan *support* di level 766 *cut loss* jika *break* 745.



**PT INDO PREMIER SEKURITAS**  
 Pacific Century Place 16th Floor SCBD Lot 10  
 Jl. Jend. Sudirman Kav. 52-53  
 Jakarta Selatan 12190 - Indonesia  
 p +62 21 5088 7200

#### ANALYSTS CERTIFICATION

The views expressed in this research report accurately reflect the analyst's personal views about any and all of the subject securities or issuers; and no part of the research analyst's compensation was, is, or will be, directly or indirectly, related to the specific recommendations or views expressed in the report.

#### DISCLAIMERS

This research is based on information obtained from sources believed to be reliable, but we do not make any representation or warranty nor accept any responsibility or liability as to its accuracy, completeness or correctness. Opinions expressed are subject to change without notice. This document is prepared for general circulation. Any recommendations contained in this document does not have regard to the specific investment objectives, financial situation and the particular needs of any specific addressee. This document is not and should not be construed as an offer or a solicitation of an offer to purchase or subscribe or sell any securities. PT. Indo Premier Sekuritas or its affiliates may seek or will seek investment banking or other business relationships with the companies in this report.

**Refer to Important disclosures on the last of this report**