

Technical Corner

17 December 2020

IHSG

Range: 6.040 – 6.200

---Indeks ditutup di atas EMA5,10 dan membentuk pola white opening marubozu yang merupakan sinyal bullish continuation, stochastic konsisten di area overbought dan MACD histogram divergence positif. Target kenaikan indeks pada level 6.200 kemudian 6.280 dengan *support* di level 6.040 dan 5.960.

IHSG (6.118)



PT Astra Agro Lestari, Tbk

Rekomendasi: Buy

---Harga ditutup di atas EMA5,10 dan membentuk pola long white marubozu yang merupakan sinyal bullish continuation, stochastic golden cross dan MACD bullish cross over. **Target** kenaikan harga pada level **12.275** kemudian 12.450 dengan *support* di level 11.925 *cut loss* jika *break* 11.750.

AAI (12.100)



Technical Corner

17 December 2020

PT IndofoodCBP Sukses Makmur, Tbk

Rekomendasi: Buy

--- Harga ditutup membentuk pola harami yang merupakan sinyal bullish reversal, stochastic oversold dan MACD histogram convergence negatif. **Target** kenaikan harga pada level **9.875** kemudian 9.975 dengan *support* di level 9.675 *cut loss* jika *break* 9.575.

ICBP (9.775)



PT Pakuwon Jati, Tbk

Rekomendasi: Buy

--- Harga ditutup di atas EMA5,10 dan membentuk pola long white marubozu yang merupakan sinyal bullish continuation, stochastic netral dan MACD divergence negatif. **Target** kenaikan harga pada level **550** kemudian 565 dengan *support* di level 520 *cut loss* jika *break* 505.

PWON (535)



Technical Corner

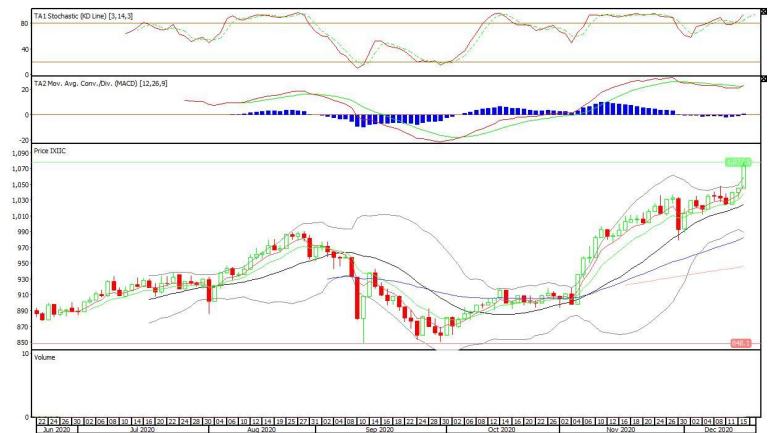
17 December 2020

Premier ETF Indonesia Consumer

Rekomendasi: Buy

--- Harga ditutup di atas EMA5,10 dan membentuk pola white opening marubozu yang merupakan sinyal bullish continuation, stochastic konsisten bergerak di area overbought dan MACD bullish cross over. **Target** kenaikan harga pada level **1.094** kemudian 1.115 dengan *support* di level 1.052 *cut loss* jika *break* 1.031.

XIIC (1.073)



XIJI (668)

Syariah Premier ETF JII

Rekomendasi: Buy

--- Harga ditutup di atas EMA5,10 dan membentuk pola white opening marubozu yang merupakan sinyal bullish continuation, stochastic konsisten bergerak di area overbought dan MACD histogram divergence positif. **Target** kenaikan harga pada level **681** kemudian 694 dengan *support* di level 655 *cut loss* jika *break* 642.



Technical Corner

17 December 2020

Pinnacle Enhanced Sharia ETF

Rekomendasi: Buy

--- Harga ditutup di atas EMA5,10 dan membentuk pola white opening marubozu yang merupakan sinyal bullish continuation, stochastic konsisten bergerak di area overbought dan MACD histogram divergence positif. **Target** kenaikan harga pada level **429** kemudian 440 dengan *support* di level 407 *cut loss* jika *break* 396.

XPES (418)



PT INDO PREMIER SEKURITAS

Pacific Century Place 16th Floor SCBD Lot 10
 Jl. Jend. Sudirman Kav. 52-53
 Jakarta Selatan 12190 - Indonesia
 p +62 21 5088 7200

ANALYSTS CERTIFICATION

The views expressed in this research report accurately reflect the analyst's personal views about any and all of the subject securities or issuers; and no part of the research analyst's compensation was, is, or will be, directly or indirectly, related to the specific recommendations or views expressed in the report.

DISCLAIMERS

This research is based on information obtained from sources believed to be reliable, but we do not make any representation or warranty nor accept any responsibility or liability as to its accuracy, completeness or correctness. Opinions expressed are subject to change without notice. This document is prepared for general circulation. Any recommendations contained in this document does not have regard to the specific investment objectives, financial situation and the particular needs of any specific addressee. This document is not and should not be construed as an offer or a solicitation of an offer to purchase or subscribe or sell any securities. PT. Indo Premier Sekuritas or its affiliates may seek or will seek investment banking or other business relationships with the companies in this report.

Refer to Important disclosures on the last of this report