

# Technical Corner

16 December 2020

## IHSG

Range: 5.950 – 6.070

---Indeks ditutup di atas EMA5,10 dan membentuk pola doji yang merupakan sinyal indecision, stochastic konsisten di area overbought dan MACD histogram convergence positif. Target kenaikan indeks pada level 6.070 kemudian 6.130 dengan *support* di level 5.950 dan 5.890.

## IHSG (6.010)



## PT Bank Rakyat Indonesia, Tbk

Rekomendasi: Buy

---Harga ditutup di atas MA20 dan membentuk pola doji yang merupakan sinyal indecision, stochastic netral dan MACD histogram divergence negatif. **Target** kenaikan harga pada level **4.370** kemudian 4.460 dengan *support* di level 4.190 *cut loss* jika *break* 4.100.

## BBRI (4.280)



# Technical Corner

16 December 2020

## PT Mitra Keluarga Karyasehat, Tbk

### Rekomendasi: Buy

--- Harga ditutup di atas EMA5,10 dan membentuk pola long white marubozu yang merupakan sinyal bullish continuation, stochastic golden cross dan MACD histogram divergence positif. **Target** kenaikan harga pada level **2.880** kemudian 2.930 dengan *support* di level 2.780 *cut loss* jika *break* 2.730.

## MIKA (2.830)



## PT Salim Ivomas Pratama, Tbk

### Rekomendasi: Buy

---Harga ditutup di atas EMA5,10 dan membentuk pola long white marubozu yang merupakan sinyal bullish continuation, stochastic konsisten bergerak di area overbought dan MACD divergence negatif. **Target** kenaikan harga pada level **408** kemudian 414 dengan *support* di level 396 *cut loss* jika *break* 390.

## SIMP (402)



# Technical Corner

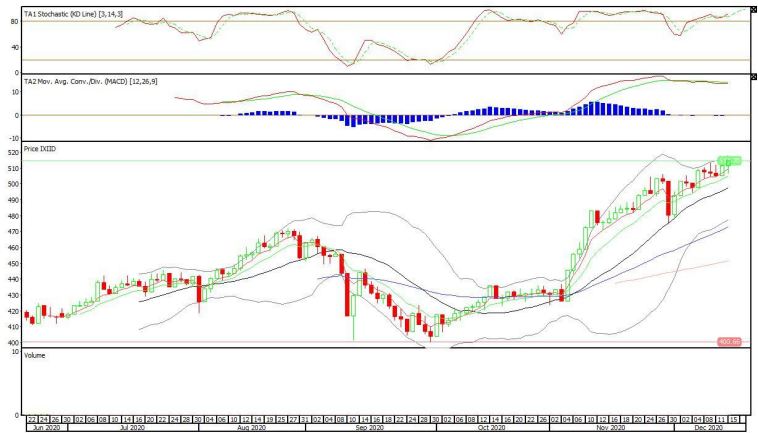
16 December 2020

## Premier ETF Index IDX30

**Rekomendasi: Buy**

--- Harga ditutup di atas EMA5,10 dan membentuk pola white closing marubozu yang merupakan sinyal bullish continuation, stochastic konsisten bergerak di area overbought dan MACD histogram convergence negatif. **Target** kenaikan harga pada level **519** kemudian 523 dengan *support* di level 511 *cut loss* jika *break* 507.

## XIID (515)

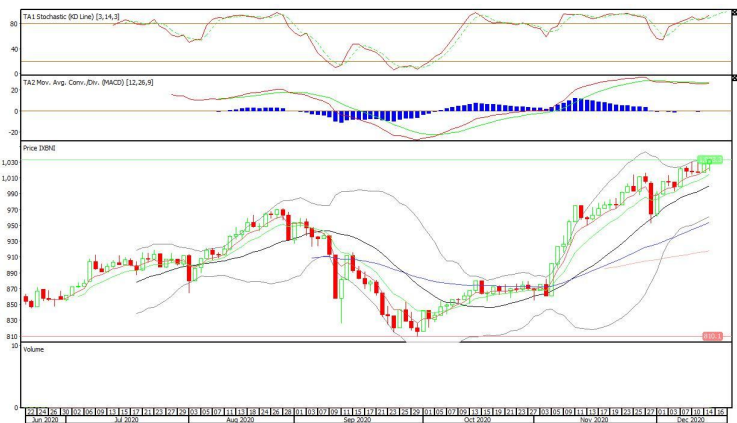


## BNI-AM Nusantara MSCI Indo ETF

**Rekomendasi: Buy**

--- Harga ditutup di atas EMA5,10 dan membentuk pola white closing marubozu yang merupakan sinyal bullish continuation, stochastic konsisten bergerak di area overbought dan MACD histogram convergence negatif. **Target** kenaikan harga pada level **1.039** kemudian 1.045 dengan *support* di level 1.027 *cut loss* jika *break* 1.021.

## XBNI (1.033)



# Technical Corner

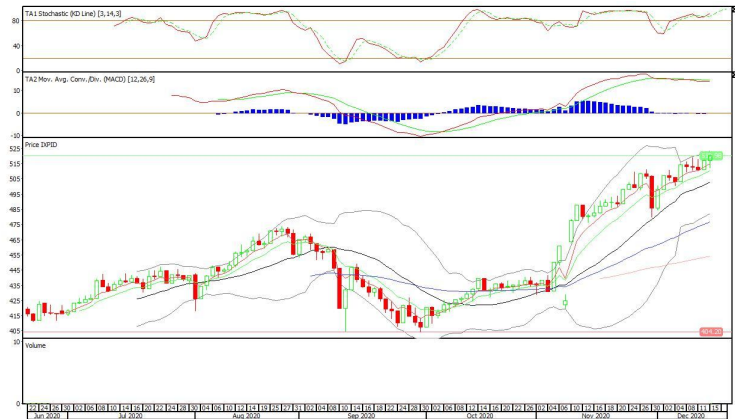
16 December 2020

## XPID (520)

### Pinnacle IDX30 ETF

#### Rekomendasi: Buy

--- Harga ditutup di atas EMA5,10 dan membentuk pola white closing marubozu yang merupakan sinyal bullish continuation, stochastic konsisten bergerak di area overbought dan MACD histogram convergence negatif. **Target** kenaikan harga pada level **524** kemudian 528 dengan *support* di level 516 *cut loss* jika *break* 512.



**PT INDO PREMIER SEKURITAS**  
 Pacific Century Place 16th Floor SCBD Lot 10  
 Jl. Jend. Sudirman Kav. 52-53  
 Jakarta Selatan 12190 - Indonesia  
 p +62 21 5088 7200

#### ANALYSTS CERTIFICATION

The views expressed in this research report accurately reflect the analyst's personal views about any and all of the subject securities or issuers; and no part of the research analyst's compensation was, is, or will be, directly or indirectly, related to the specific recommendations or views expressed in the report.

#### DISCLAIMERS

This research is based on information obtained from sources believed to be reliable, but we do not make any representation or warranty nor accept any responsibility or liability as to its accuracy, completeness or correctness. Opinions expressed are subject to change without notice. This document is prepared for general circulation. Any recommendations contained in this document does not have regard to the specific investment objectives, financial situation and the particular needs of any specific addressee. This document is not and should not be construed as an offer or a solicitation of an offer to purchase or subscribe or sell any securities. PT. Indo Premier Sekuritas or its affiliates may seek or will seek investment banking or other business relationships with the companies in this report.

**Refer to Important disclosures on the last of this report**