

Technical Corner

14 December 2020

IHSG

Range: 5.890 – 5.990

---Indeks ditutup di atas EMA5,10 dan membentuk pola small bearish candle, stochastic konsisten bergerak di area overbought dan MACD histogram convergence positif. Target kenaikan indeks pada level 5.990 kemudian 6.040 dengan *support* di level 5.890 dan 5.840.

IHSG (5.938)



PT Puradelta Lestari, Tbk

Rekomendasi: Buy

---Harga ditutup di atas EMA5,10 dan membentuk pola long white marubozu yang merupakan sinyal bullish continuation, stochastic golden cross dan MACD histogram convergence negatif. **Target** kenaikan harga pada level 260 kemudian 266 dengan *support* di level 248 *cut loss* jika break 242.

DMAS (254)



Technical Corner

14 December 2020

PT Indo Tambangraya Megah, Tbk

Rekomendasi: Buy

--- Harga ditutup di atas EMA5,10 dan membentuk pola harami yang merupakan sinyal bullish reversal, stochastic overbought dan MACD histogram convergence positif. **Target** kenaikan harga pada level **15.050** kemudian 15.425 dengan *support* di level 14.300 *cut loss* jika *break* 13.925.

ITMG (14.675)



PT Wijaya Karya Beton, Tbk

Rekomendasi: Buy

---Harga ditutup di atas EMA10 dan membentuk pola small bearish candle, stochastic netral dan MACD divergence positif. **Target** kenaikan harga pada level **386** kemudian 394 dengan *support* di level 370 *cut loss* jika *break* 362.

WTON (378)



Technical Corner

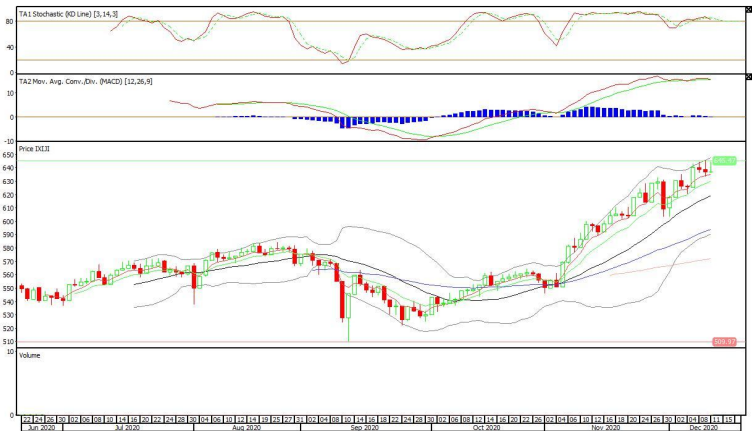
14 December 2020

Syariah Premier ETF JII

Rekomendasi: Buy

--- Harga ditutup di atas EMA5,10 dan membentuk pola doji yang merupakan sinyal indecision, stochastic death cross dan MACD histogram convergence positif. **Target** kenaikan harga pada level **644** kemudian 651 dengan *support* di level 630 *cut loss* jika *break* 623.

XIJI (637)

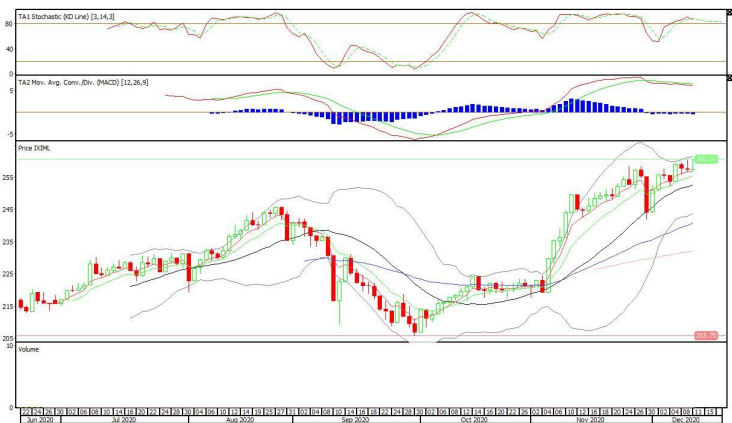


XIML (257)

Premier ETF MSCI Indonesia Large Cap

Rekomendasi: Buy

--- Harga ditutup membentuk pola doji yang merupakan sinyal indecision, stochastic death cross dan MACD histogram divergence negatif. **Target** kenaikan harga pada level **261** kemudian 265 dengan *support* di level 253 *cut loss* jika *break* 249.



Technical Corner

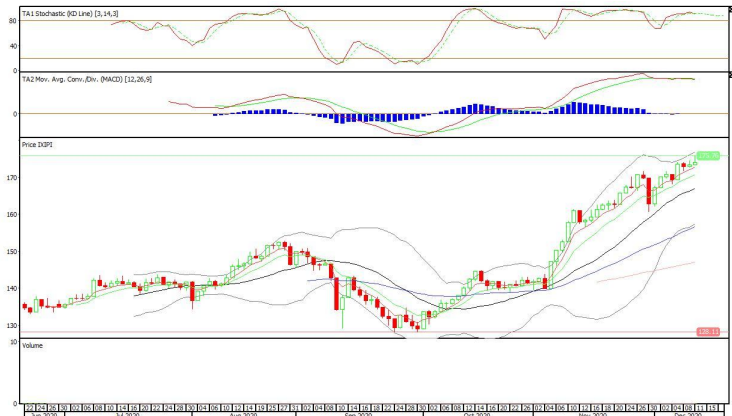
14 December 2020

Premier ETF Pefindo i-Grade

Rekomendasi: Buy

--- Meskipun harga membentuk pola shooting star yang merupakan sinyal bearish reversal namun masih ditutup di atas EMA5,10, stochastic death cross dan MACD histogram divergence negatif. **Target** kenaikan harga pada level **176** kemudian 178 dengan *support* di level 172 *cut loss* jika *break* 170.

XIPI (174)



PT INDO PREMIER SEKURITAS
 Pacific Century Place 16th Floor SCBD Lot 10
 Jl. Jend. Sudirman Kav. 52-53
 Jakarta Selatan 12190 - Indonesia
 p +62 21 5088 7200

ANALYSTS CERTIFICATION

The views expressed in this research report accurately reflect the analyst's personal views about any and all of the subject securities or issuers; and no part of the research analyst's compensation was, is, or will be, directly or indirectly, related to the specific recommendations or views expressed in the report.

DISCLAIMERS

This research is based on information obtained from sources believed to be reliable, but we do not make any representation or warranty nor accept any responsibility or liability as to its accuracy, completeness or correctness. Opinions expressed are subject to change without notice. This document is prepared for general circulation. Any recommendations contained in this document does not have regard to the specific investment objectives, financial situation and the particular needs of any specific addressee. This document is not and should not be construed as an offer or a solicitation of an offer to purchase or subscribe or sell any securities. PT. Indo Premier Sekuritas or its affiliates may seek or will seek investment banking or other business relationships with the companies in this report.

Refer to Important disclosures on the last of this report