

Technical Corner

11 December 2020

IHSG

Range: 5.890 – 5.980

---Indeks meskipun ditutup membentuk pola long black marubozu yang merupakan sinyal bearish continuation namun masih bertahan di atas EMA5,10, stochastic konsisten bergerak di area overbought dan MACD histogram convergence positif. Target kenaikan indeks pada level 5.980 kemudian 6.025 dengan *support* di level 5.890 dan 5.845.

IHSG (5.934)



PT Ace Hardware Indonesia, Tbk

Rekomendasi: Buy

---Harga ditutup di atas EMA5,10 dan membentuk pola white closing marubozu yang merupakan sinyal bullish continuation, stochastic golden cross dan MACD histogram convergence negatif. **Target** kenaikan harga pada level 1.710 kemudian 1.740 dengan *support* di level 1.650 *cut loss* jika break 1.620.

ACES (1.680)



Technical Corner

11 December 2020

PT Ciputra Development, Tbk

Rekomendasi: Buy

--- Harga ditutup di atas EMA5,10 dan membentuk pola white opening marubozu yang merupakan sinyal bullish continuation, stochastic netral dan MACD histogram convergence negatif. **Target** kenaikan harga pada level **970** kemudian 1.010 dengan *support* di level 890 *cut loss* jika *break* 850.

CTRA (930)



PT Summarecon Agung, Tbk

Rekomendasi: Buy

---Harga ditutup di bawah MA20 dan membentuk pola long white marubozu yang merupakan sinyal bullish continuation, stochastic netral dan MACD divergence negatif. **Target** kenaikan harga pada level **820** kemudian 835 dengan *support* di level 790 *cut loss* jika *break* 775.

SMRA (805)



Technical Corner

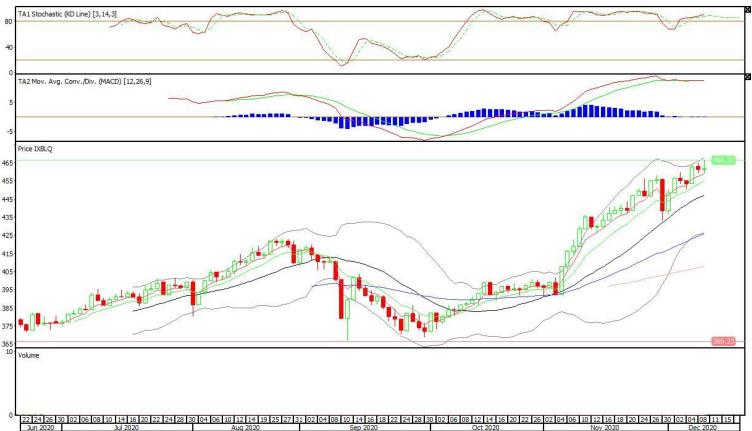
11 December 2020

Batavia Smart Liquid ETF

Rekomendasi: Buy

--- Harga ditutup di atas EMA5,10 dan membentuk pola doji yang merupakan sinyal indecision, stochastic overbought dan MACD histogram divergence positif. **Target** kenaikan harga pada level **466** kemudian 470 dengan *support* di level 458 *cut loss* jika *break* 454.

XBLQ (462)

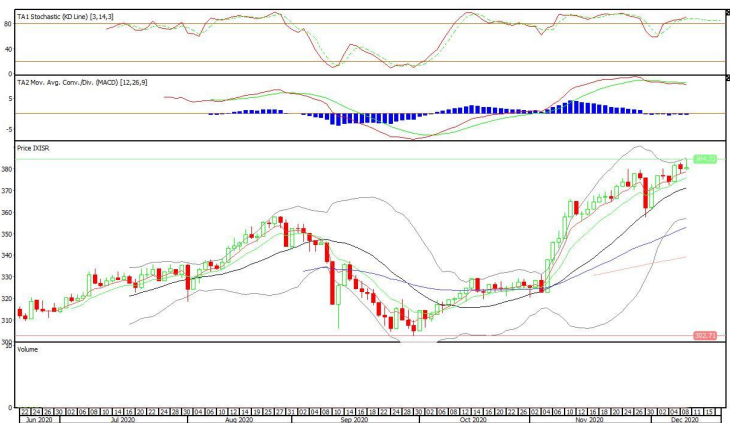


Premier ETF SRI-KEHATI

Rekomendasi: Buy

--- Harga ditutup membentuk pola small bullish candle, stochastic overbought dan MACD histogram divergence negatif. **Target** kenaikan harga pada level **384** kemudian 388 dengan *support* di level 376 *cut loss* jika *break* 372.

XISR (380)



Technical Corner

11 December 2020

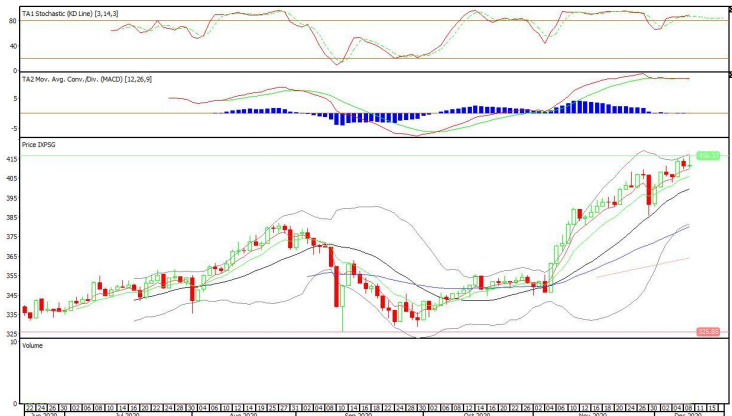
XPSG (412)

Pinnacle Indonesia ESG ETF

Rekomendasi: Buy

--- Harga ditutup di atas EMA5,10 dan membentuk pola doji yang merupakan sinyal indecision, stochastic overbought dan MACD histogram divergence negatif.

Target kenaikan harga pada level **416** kemudian 420 dengan *support* di level 408 *cut loss* jika *break* 404.



PT INDO PREMIER SEKURITAS
 Pacific Century Place 16th Floor SCBD Lot 10
 Jl. Jend. Sudirman Kav. 52-53
 Jakarta Selatan 12190 - Indonesia
 p +62 21 5088 7200

ANALYSTS CERTIFICATION

The views expressed in this research report accurately reflect the analyst's personal views about any and all of the subject securities or issuers; and no part of the research analyst's compensation was, is, or will be, directly or indirectly, related to the specific recommendations or views expressed in the report.

DISCLAIMERS

This research is based on information obtained from sources believed to be reliable, but we do not make any representation or warranty nor accept any responsibility or liability as to its accuracy, completeness or correctness. Opinions expressed are subject to change without notice. This document is prepared for general circulation. Any recommendations contained in this document does not have regard to the specific investment objectives, financial situation and the particular needs of any specific addressee. This document is not and should not be construed as an offer or a solicitation of an offer to purchase or subscribe or sell any securities. PT. Indo Premier Sekuritas or its affiliates may seek or will seek investment banking or other business relationships with the companies in this report.

Refer to Important disclosures on the last of this report