

# Technical Corner

2 December 2020

## IHSG

**Range: 5.640 – 5.810**

---Indeks ditutup di atas EMA5,10 dan membentuk pola long white marubozu yang merupakan sinyal bullish continuation, stochastic netral dan MACD histogram convergence positif. Target kenaikan indeks pada level 5.810 kemudian 5.895 dengan *support* di level **5.640** dan 5.555.

## IHSG (5.725)



## PT Bank Negara Indonesia, Tbk

**Rekomendasi: Buy**

---Harga ditutup di atas EMA5,10 dan membentuk pola white closing marubozu yang merupakan sinyal bullish continuation, stochastic overbought dan MACD histogram convergence positif. **Target** kenaikan harga pada level **6.425** kemudian 6.600 dengan *support* di level 6.075 *cut loss* jika *break* 5.900.

## BBNI (6.250)



# Technical Corner

2 December 2020

## PT Perusahaan Gas Negara, Tbk

### Rekomendasi: Buy

--- Harga ditutup di atas EMA10 dan membentuk pola doji yang merupakan sinyal indecision, stochastic netral dan MACD histogram *convergence* positif.

**Target** kenaikan harga pada level **1.445** kemudian 1.500 dengan *support* di level 1.335 *cut loss* jika *break* 1.280.

## PGAS (1.390)



## PT Wijaya Karya Beton, Tbk

### Rekomendasi: Buy

---Harga ditutup di atas EMA5,10 dan membentuk pola long white marubozu yang merupakan sinyal bullish continuation, stochastic overbought dan MACD histogram convergence positif.

**Target** kenaikan harga pada level **366** kemudian 374 dengan *support* di level 350 *cut loss* jika *break* 342

## WTON (358)



# Technical Corner

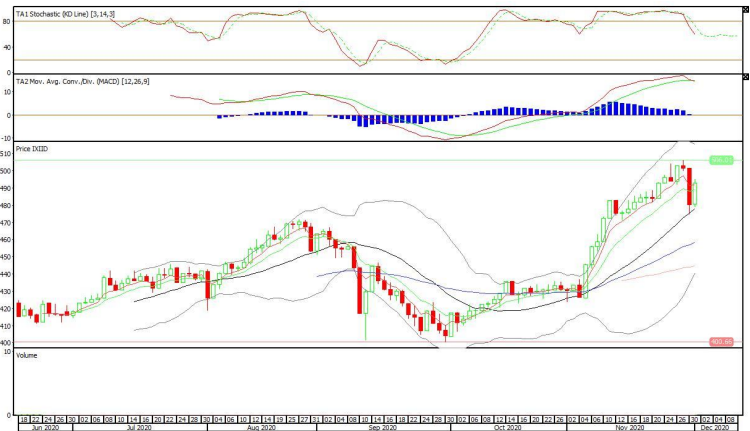
2 December 2020

## Premier ETF Index IDX30

**Rekomendasi: Buy**

--- Harga ditutup di atas EMA5,10 dan membentuk pola long white marubozu yang merupakan sinyal bullish continuation, stochastic netral dan MACD bearish cross over. **Target** kenaikan harga pada level **505** kemudian 517 dengan *support* di level 481 *cut loss* jika *break* 469.

## XIID (493)



## XIML (251)

## Premier ETF MSCI Indonesia Large Cap

**Rekomendasi: Buy**

--- Harga ditutup di atas EMA5,10 dan membentuk pola long white marubozu yang merupakan sinyal bullish continuation, stochastic netral dan MACD histogram divergence negatif. **Target** kenaikan harga pada level **258** kemudian 265 dengan *support* di level 244 *cut loss* jika *break* 237.



# Technical Corner

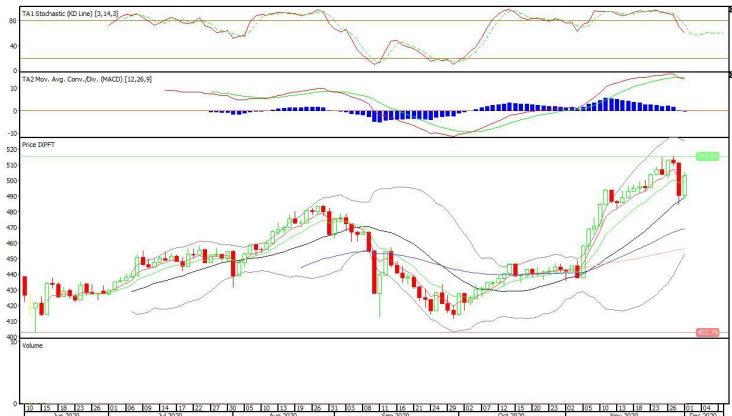
2 December 2020

## Pinnacle FTSE Indonesia ETF

### Rekomendasi: Buy

--- Harga ditutup di atas EMA5,10 dan membentuk pola long white marubozu yang merupakan sinyal bullish continuation, stochastic netral dan MACD histogram divergence negatif. **Target** kenaikan harga pada level **516** kemudian 529 dengan *support* di level 490 *cut loss* jika *break* 477.

### XPFT (503)



**PT INDO PREMIER SEKURITAS**  
 Pacific Century Place 16th Floor SCBD Lot 10  
 Jl. Jend. Sudirman Kav. 52-53  
 Jakarta Selatan 12190 - Indonesia  
 p +62 21 5088 7200

#### ANALYSTS CERTIFICATION

The views expressed in this research report accurately reflect the analyst's personal views about any and all of the subject securities or issuers; and no part of the research analyst's compensation was, is, or will be, directly or indirectly, related to the specific recommendations or views expressed in the report.

#### DISCLAIMERS

This research is based on information obtained from sources believed to be reliable, but we do not make any representation or warranty nor accept any responsibility or liability as to its accuracy, completeness or correctness. Opinions expressed are subject to change without notice. This document is prepared for general circulation. Any recommendations contained in this document does not have regard to the specific investment objectives, financial situation and the particular needs of any specific addressee. This document is not and should not be construed as an offer or a solicitation of an offer to purchase or subscribe or sell any securities. PT. Indo Premier Sekuritas or its affiliates may seek or will seek investment banking or other business relationships with the companies in this report.

Refer to Important disclosures on the last of this report