

# Technical Corner

25 November 2020

## IHSG

Range: 5.650 – 5.750

---Indeks ditutup di atas EMA5,10 dan membentuk pola long white marubozu yang merupakan sinyal bullish continuation, stochastic overbought dan MACD histogram convergence positif. **Target** kenaikan indeks pada level **5.750** kemudian 5.800 dengan *support* di level 5.650 dan 5.600.

## IHSG (5.701)



## PT Bank Central Asia, Tbk

Rekomendasi: Buy on Weakness

---Harga ditutup membentuk pola black opening marubozu yang merupakan sinyal bearish continuation namun masih bertahan di atas EMA10, stochastic overbought dan MACD histogram convergence positif. **Target** harga beli pada level **32.550** dengan *resist* di level 33.000 kemudian 33.250.

## BBCA (32.825)



# Technical Corner

25 November 2020

## PT BPD Jawa Timur, Tbk

### Rekomendasi: Buy

--- Harga ditutup di atas EMA5,10 dan membentuk pola white marubozu yang merupakan sinyal bullish continuation, stochastic overbought dan MACD histogram divergence positif. **Target** kenaikan harga pada level **645** kemudian 660 dengan *support* di level 615 *cut loss* jika *break* 600.

## BJTM (630)



## TKIM (6.975)

## PT Pabrik Kertas Tjiwi Kimia, Tbk

### Rekomendasi: Buy

---Harga ditutup di atas EMA5,10 dan membentuk pola long white marubozu yang merupakan sinyal bullish continuation, stochastic netral dan MACD histogram divergence positif. **Target** kenaikan harga pada level **7.100** kemudian 7.225 dengan *support* di level 6.850 *cut loss* jika *break* 6.725.



# Technical Corner

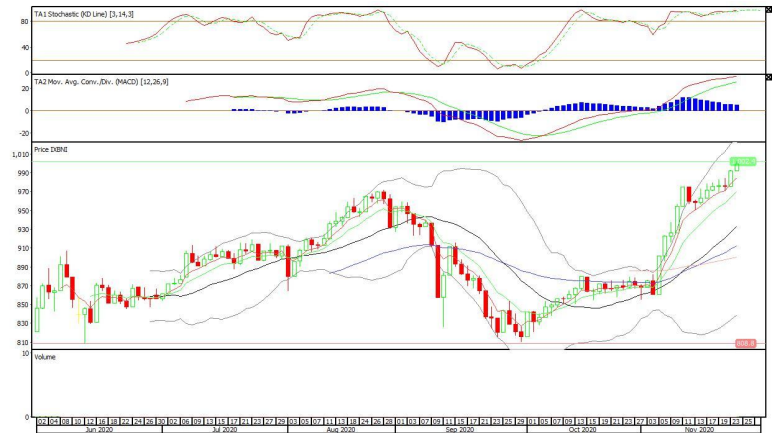
25 November 2020

## XBNI (999)

### BNI-AM Nusantara MSCI Indo ETF

**Rekomendasi: Buy**

--- Harga ditutup di atas EMA5,10 membentuk pola white opening marubozu yang merupakan sinyal bullish continuation, stochastic overbought dan MACD histogram convergence positif. **Target** kenaikan harga pada level **1.006** kemudian 1.013 dengan *support* di level 992 *cut loss* jika *break* 985.



## XIPI (167)

### Premier ETF Pefindo i-Grade

**Rekomendasi: Buy**

--- Harga ditutup diatas EMA5,10 dan membentuk pola white opening marubozu yang merupakan sinyal bullish continuation, stochastic overbought dan MACD histogram convergence positif. **Target** kenaikan harga pada level **169** kemudian 171 dengan *support* di level 165 *cut loss* jika *break* 163.



# Technical Corner

25 November 2020

## XPDV (443)

### Pinnacle Core High Dividend ETF

#### Rekomendasi: Buy

--- Harga ditutup diatas EMA5,10 dan membentuk pola white opening marubozu yang merupakan sinyal bullish continuation, stochastic overbought dan MACD histogram divergence positif. **Target** kenaikan harga pada level **446** kemudian 449 dengan *support* di level 440 *cut loss* jika *break* 437.



**PT INDO PREMIER SEKURITAS**  
 Pacific Century Place 16th Floor SCBD Lot 10  
 Jl. Jend. Sudirman Kav. 52-53  
 Jakarta Selatan 12190 - Indonesia  
 p +62 21 5088 7200

#### ANALYSTS CERTIFICATION

The views expressed in this research report accurately reflect the analyst's personal views about any and all of the subject securities or issuers; and no part of the research analyst's compensation was, is, or will be, directly or indirectly, related to the specific recommendations or views expressed in the report.

#### DISCLAIMERS

This research is based on information obtained from sources believed to be reliable, but we do not make any representation or warranty nor accept any responsibility or liability as to its accuracy, completeness or correctness. Opinions expressed are subject to change without notice. This document is prepared for general circulation. Any recommendations contained in this document does not have regard to the specific investment objectives, financial situation and the particular needs of any specific addressee. This document is not and should not be construed as an offer or a solicitation of an offer to purchase or subscribe or sell any securities. PT. Indo Premier Sekuritas or its affiliates may seek or will seek investment banking or other business relationships with the companies in this report.

**Refer to Important disclosures on the last of this report**