

Technical Corner

16 November 2020

IHSG

Range: 5.425 – 5.495

---Indeks ditutup di atas EMA5,10 dan membentuk pola small bullish candle, stochastic overbought dan MACD histogram convergence positif. **Target** kenaikan indeks pada level **5.495** kemudian 5.525 dengan *support* di level 5.425 dan 5.390.

IHSG (5.461)



PT Bank Rakyat Indonesia, Tbk

Rekomendasi: Buy

---Harga ditutup di atas EMA5,10 dan membentuk pola inverted hammer yang merupakan sinyal bullish reversal, stochastic overbought dan MACD histogram convergence positif. **Target** kenaikan harga pada level **4.080** kemudian 4.190 dengan *support* di level 3.920 *cut loss* jika *break* 3.840.

BBRI (4.000)



Technical Corner

16 November 2020

PT Bumi Serpong Damai, Tbk

Rekomendasi: Buy

--- Harga ditutup di atas EMA5,10 dan membentuk long white marubozu yang merupakan sinyal bullish continuation, stochastic overbought dan MACD histogram convergence positif. **Target** kenaikan harga pada level **1.045** kemudian 1.070 dengan *support* di level 1.000 *cut loss* jika *break* 975.

BSDE (1.025)



PT Media Nusantara Citra, Tbk

Rekomendasi: Buy

---Harga ditutup di atas EMA5,10 dan membentuk pola white opening marubozu yang merupakan sinyal bullish continuation, stochastic netral dan MACD histogram convergence positif. **Target** kenaikan harga pada level **900** kemudian 925 dengan *support* di level 850 *cut loss* jika *break* 825.

MNCN (875)



Technical Corner

16 November 2020

Danareksa ETF Indonesia Top 40

Rekomendasi: Buy

--- Harga ditutup di atas EMA5,10 membentuk pola doji yang merupakan sinyal indecision, stochastic death cross dan MACD histogram convergence positif. **Target** kenaikan harga pada level **431** kemudian 435 dengan *support* di level 423 *cut loss* jika *break* 419.

XDIF (427)

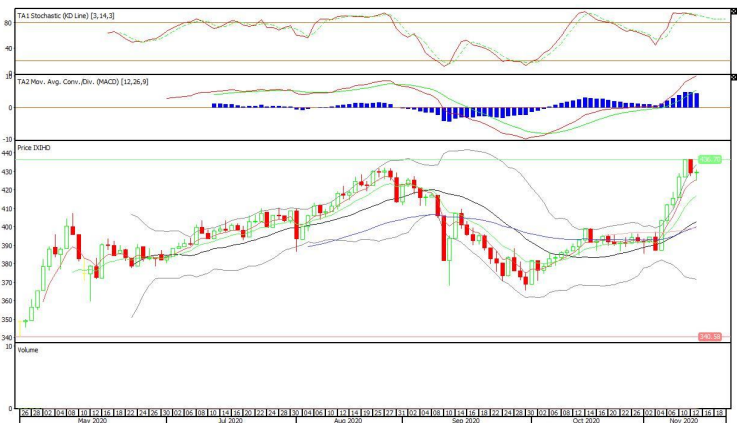


XIHD (430)

Premier ETF IDX High Dividend 20

Rekomendasi: Buy

--- Harga ditutup di atas EMA5,10, dan membentuk pola doji yang merupakan sinyal indecision, stochastic overbought dan MACD histogram convergence positif. **Target** kenaikan harga pada level **435** kemudian 440 dengan *support* di level 425 *cut loss* jika *break* 420.



Technical Corner

16 November 2020

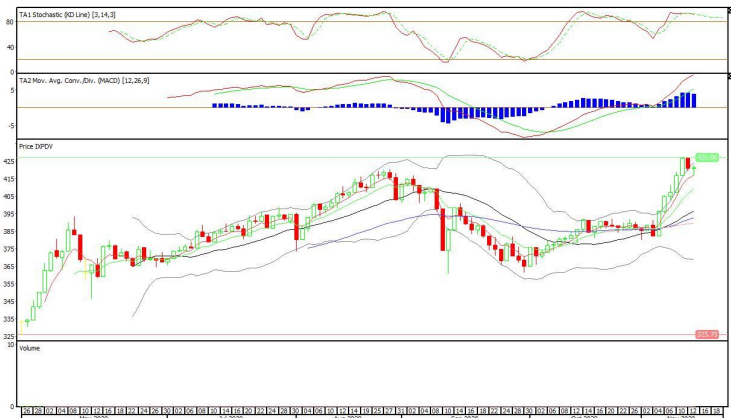
XPDV (421)

Pinnacle Core High Dividend ETF

Rekomendasi: Buy

--- Harga ditutup di atas EMA5,10 dan membentuk pola doji yang merupakan sinyal indecision, stochastic overbought dan MACD histogram convergence positif.

Target kenaikan harga pada level **425** kemudian 429 dengan *support* di level 417 *cut loss* jika *break* 413.



PT INDO PREMIER SEKURITAS
 Pacific Century Place 16th Floor SCBD Lot 10
 Jl. Jend. Sudirman Kav. 52-53
 Jakarta Selatan 12190 - Indonesia
 p +62 21 5088 7200

ANALYSTS CERTIFICATION

The views expressed in this research report accurately reflect the analyst's personal views about any and all of the subject securities or issuers; and no part of the research analyst's compensation was, is, or will be, directly or indirectly, related to the specific recommendations or views expressed in the report.

DISCLAIMERS

This research is based on information obtained from sources believed to be reliable, but we do not make any representation or warranty nor accept any responsibility or liability as to its accuracy, completeness or correctness. Opinions expressed are subject to change without notice. This document is prepared for general circulation. Any recommendations contained in this document does not have regard to the specific investment objectives, financial situation and the particular needs of any specific addressee. This document is not and should not be construed as an offer or a solicitation of an offer to purchase or subscribe or sell any securities. PT. Indo Premier Sekuritas or its affiliates may seek or will seek investment banking or other business relationships with the companies in this report.

Refer to Important disclosures on the last of this report