

Technical Corner

13 November 2020

IHSG

Range: 5.420 – 5.500

---Indeks ditutup tepat di upper band dan membentuk pola long black marubozu yang merupakan sinyal bearish continuation, stochastic death cross dan MACD histogram convergence positif. **Target** pelemahan indeks pada level 5.420 kemudian 5.380 dengan *resist* di level 5.500 dan 5.540.

IHSG (5.459)



PT Bank Mandiri, Tbk

Rekomendasi: Buy on Weakness

---Harga ditutup di bawah EM5 dan membentuk pola long black marubozu yang merupakan sinyal bearish continuation, stochastic overbought dan MACD histogram convergence positif. **Target** harga beli pada level 6.025 dengan *resist* di level 6.325, kemudian 6.500.

BMRI (6.175)



Technical Corner

13 November 2020

PT Ciputra Development, Tbk

Rekomendasi: Buy on Weakness

--- Harga ditutup di bawah EMA5 dan membentuk pola black opening marubozu yang merupakan sinyal bearish continuation, stochastic netral dan MACD histogram convergence positif. **Target** harga beli pada level **840** dengan *resist* di level 890, kemudian 920.

CTRA (865)



PT Vale Indonesia, Tbk

Rekomendasi: Buy on Weakness

---Harga ditutup tepat di EMA5 dan membentuk pola black opening marubozu yang merupakan sinyal bearish continuation, stochastic death cross dan MACD histogram convergence positif. **Target** harga beli pada level **4.290** dengan *resist* di level 4.520, kemudian 4.625.

INCO (4.410)



Technical Corner

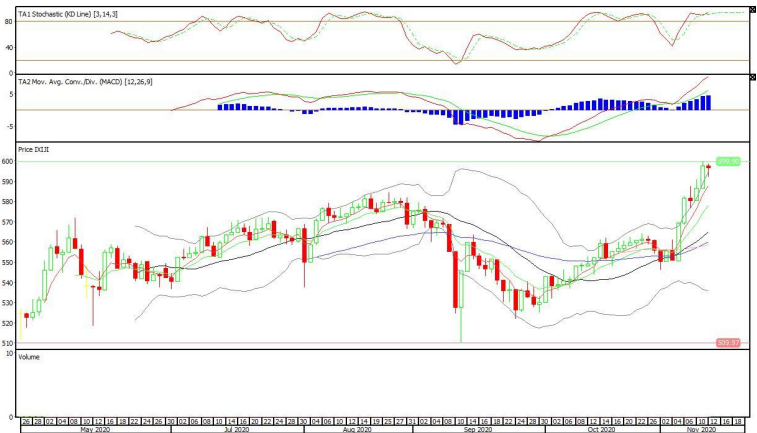
13 November 2020

Syariah Premier ETF JII

Rekomendasi: Sell

--- Harga ditutup di atas EMA5,10 membentuk pola doji yang merupakan sinyal indecision, stochastic overbought dan MACD histogram divergence positif. **Target** pelemahan harga pada level **592** kemudian 587 dengan *resist* di level 602 kemudian 607.

XIJI (597)

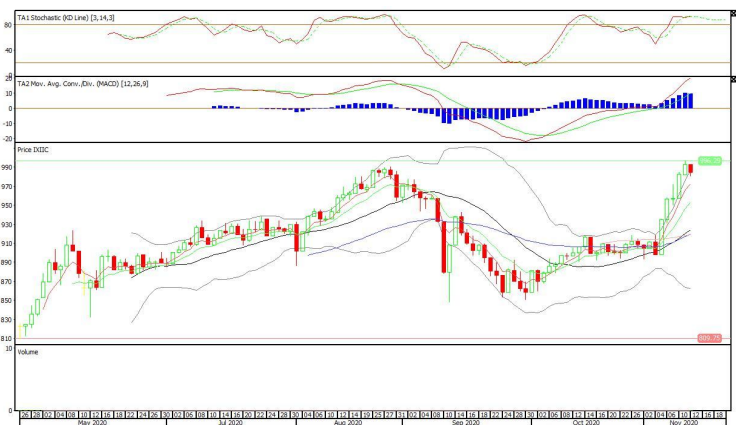


XIIC (984)

Premier ETF Indonesia Consumer

Rekomendasi: Sell

--- Harga ditutup tepat di upper band, dan membentuk pola black opening marubozu yang merupakan sinyal bearish continuation, stochastic overbought dan MACD histogram convergence positif. **Target** pelemahan harga pada level **975** kemudian 966 dengan *resist* di level 993 kemudian 1.002.



Technical Corner

13 November 2020

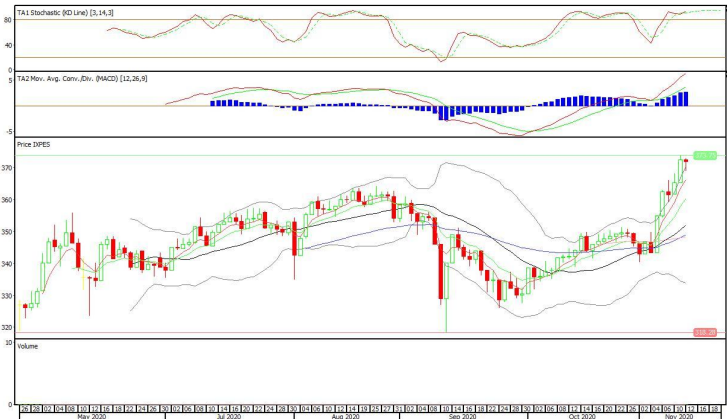
XPES (372)

Pinnacle Enhanced Sharia ETF

Rekomendasi: Sell

--- Harga ditutup di atas upper band dan membentuk doji yang merupakan sinyal indecision, stochastic overbought dan MACD histogram divergence positif.

Target pelemahan harga pada level **369** kemudian 366 dengan *resist* di level 375 kemudian 378.



PT INDO PREMIER SEKURITAS
 Pacific Century Place 16th Floor SCBD Lot 10
 Jl. Jend. Sudirman Kav. 52-53
 Jakarta Selatan 12190 - Indonesia
 p +62 21 5088 7200

ANALYSTS CERTIFICATION

The views expressed in this research report accurately reflect the analyst's personal views about any and all of the subject securities or issuers; and no part of the research analyst's compensation was, is, or will be, directly or indirectly, related to the specific recommendations or views expressed in the report.

DISCLAIMERS

This research is based on information obtained from sources believed to be reliable, but we do not make any representation or warranty nor accept any responsibility or liability as to its accuracy, completeness or correctness. Opinions expressed are subject to change without notice. This document is prepared for general circulation. Any recommendations contained in this document does not have regard to the specific investment objectives, financial situation and the particular needs of any specific addressee. This document is not and should not be construed as an offer or a solicitation of an offer to purchase or subscribe or sell any securities. PT. Indo Premier Sekuritas or its affiliates may seek or will seek investment banking or other business relationships with the companies in this report.

Refer to Important disclosures on the last of this report