

# Technical Corner

11 November 2020

## IHSG

**Range: 5.420 – 5.505**

---Indeks ditutup di atas EMA5,10 dan membentuk pola long white marubozu yang merupakan sinyal bullish continuation, stochastic overbought dan MACD histogram divergence positif. **Target** kenaikan indeks pada level **5.505** kemudian 5.545 dengan *support* di level 5.420 dan 5.380.

## IHSG (5.463)



## PT AKR Corporindo, Tbk

**Rekomendasi: Buy**

---Harga ditutup di atas EMA5,10 dan membentuk pola long white marubozu yang merupakan sinyal bullish continuation, stochastic overbought dan MACD histogram divergence positif. **Target** kenaikan harga pada level **2.920** kemudian 3.000 dengan *support* di level 2.760 *cut loss* jika *break* 2.680.

## AKRA (2.840)



# Technical Corner

11 November 2020

## PT H.M. Sampoerna, Tbk

### Rekomendasi: Buy

--- Harga ditutup di atas MA20 dan membentuk pola long white marubozu yang merupakan sinyal bullish continuation, stochastic netral dan MACD histogram divergence positif. **Target** kenaikan harga pada level **1.555** kemudian 1.605 dengan *support* di level 1.455 *cut loss* jika *break* 1.405.

## HMSP (1.505)



## WTON (272)

## PT Wijaya Karya Beton, Tbk

### Rekomendasi: Buy

---Harga ditutup di atas EMA50 dan membentuk pola white opening marubozu yang merupakan sinyal bullish continuation, stochastic netral dan MACD histogram divergence positif. **Target** kenaikan harga pada level **284** kemudian 296 dengan *support* di level 260 *cut loss* jika *break* 248.



# Technical Corner

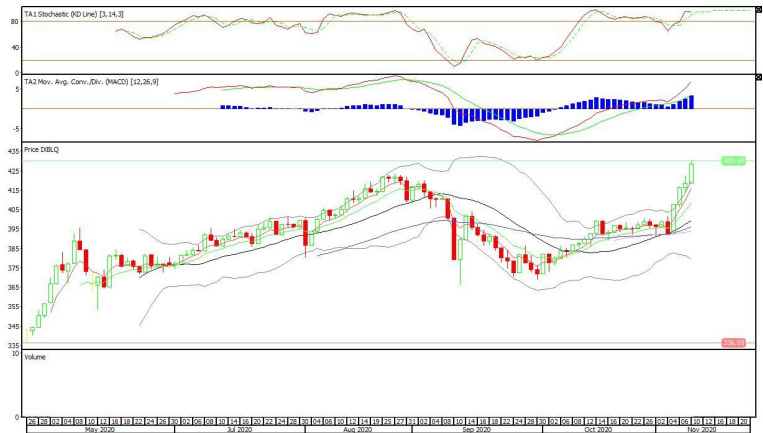
11 November 2020

## Batavia Smart Liquid ETF

**Rekomendasi: Buy**

--- Harga ditutup di atas EMA5,10 membentuk pola white opening marubozu yang merupakan sinyal bullish continuation, stochastic overbought dan MACD histogram divergence positif. **Target** kenaikan harga pada level **439** kemudian 449 dengan *support* di level 419 *cut loss* jika *break* 409.

## XBLO (429)

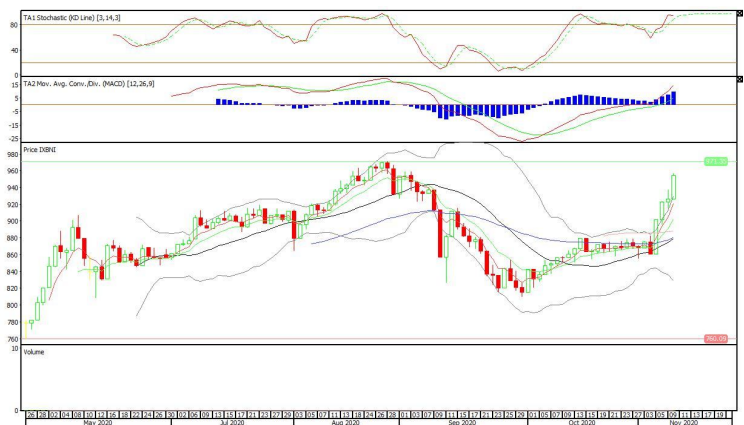


## XBNI (954)

## BNI AM Nusantara ETF MSCI Indonesia

**Rekomendasi: Buy**

--- Harga ditutup di atas EMA5,10, dan membentuk pola white opening marubozu yang merupakan sinyal bullish continuation, stochastic overbought dan MACD histogram divergence positif. **Target** kenaikan harga pada level **982** kemudian 1.010 dengan *support* di level 926 *cut loss* jika *break* 898.



# Technical Corner

11 November 2020

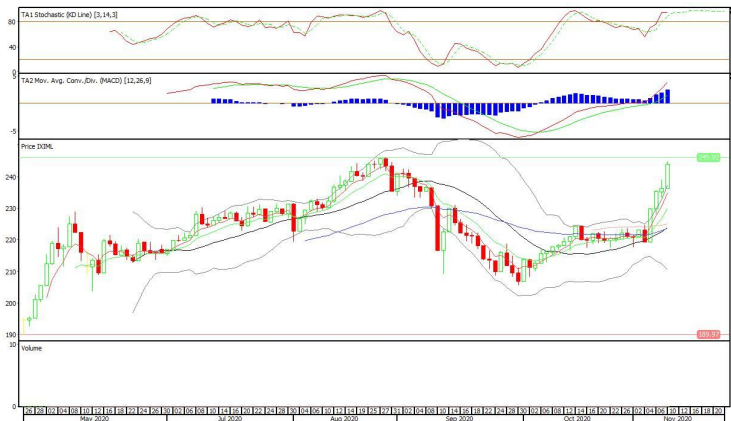
## XIML (244)

### Premier ETF MSCI Indonesia Large Cap

#### Rekomendasi: Buy

--- Harga ditutup di atas EMA5,10 dan membentuk pola white opening marubozu yang merupakan sinyal bullish continuation, stochastic overbought dan MACD histogram divergence positif.

**Target** kenaikan harga pada level **252** kemudian 260 dengan *support* di level 236 *cut loss* jika *break* 228.



### PT INDO PREMIER SEKURITAS

Pacific Century Place 16th Floor SCBD Lot 10  
 Jl. Jend. Sudirman Kav. 52-53  
 Jakarta Selatan 12190 - Indonesia  
 p +62 21 5088 7200

#### ANALYSTS CERTIFICATION

The views expressed in this research report accurately reflect the analyst's personal views about any and all of the subject securities or issuers; and no part of the research analyst's compensation was, is, or will be, directly or indirectly, related to the specific recommendations or views expressed in the report.

#### DISCLAIMERS

This research is based on information obtained from sources believed to be reliable, but we do not make any representation or warranty nor accept any responsibility or liability as to its accuracy, completeness or correctness. Opinions expressed are subject to change without notice. This document is prepared for general circulation. Any recommendations contained in this document does not have regard to the specific investment objectives, financial situation and the particular needs of any specific addressee. This document is not and should not be construed as an offer or a solicitation of an offer to purchase or subscribe or sell any securities. PT. Indo Premier Sekuritas or its affiliates may seek or will seek investment banking or other business relationships with the companies in this report.

**Refer to Important disclosures on the last of this report**